



**Mitcham**  
Primary School  
thinkers | learners | leaders

## MITCHAM PRIMARY SCHOOL NEWSLETTER

# Mitchat

### IMPORTANT DATES

- MAY 8** DISTRICT X - COUNTRY
  - MAY 9** MOTHERS DAY STALL
  - MAY 9** PREP 2020 INFO EVENING - 6.00PM
  - MAY 10** MOTHERS DAY STALL
  - MAY 10** MITCHKIDS BEGINS
  - MAY 14** NAPLAN DAY 1
  - MAY 15** NAPLAN DAY 2
  - MAY 16** NAPLAN DAY 3
  - MAY 18** OPEN DAY
  - MAY 20** SPECIAL PERSON DAY
  - MAY 23** WORKING OPEN DAY
  - MAY 31** SCHOOL PHOTOS
  - JUNE 10** QUEEN'S BIRTHDAY
  - JUNE 11** STUDENT FREE DAY
  - JUNE 14** 5/6 WINTER SPORT
- ...SEE PAGE 6 FOR MORE

### VALUE OF THE MONTH

## RESILIENCE



**TAKE A LOOK AT OUR HOUSE SHIRTS!**

### IN THIS ISSUE

- FROM THE PRINCIPAL'S DESK
  - FROM THE ASSISTANT PRINCIPAL'S DESK
  - FROM THE MITCHAM PRIMARY OFFICE
  - NEWS AND UPDATES
  - OSCHCLUB NEWS
- ... AND MUCH MORE



## FROM THE PRINCIPAL'S DESK

We are truly back into the swing of things now and this has been a wonderfully full and settled week at Mitcham Primary School. A highlight for me was being a part of a Grade 1/2 lesson early in the week where students were being encouraged by their teachers to explore their own prior knowledge about the Integrated Studies unit focus for this term, Change.

In groups students confidently shared their understanding of the concept of Change and things they identified as being capable of changing, some of their knowledge included: people, time, our bodies, plants, families seasons and emotions. While I was wowed by their thoughts and elaborations, what also made me proud was the maturity and confidence with which our students were able to work collaboratively together to develop comprehensive mind maps to track and record their thinking.

Yesterday, I returned to the classes where I had observed this activity and was besieged by excited learners wanting to share the details of how they were conducting a scientific experiment to discover how foods change with time, I heard about all their predictions and day one observations. Witnessing this genuine excitement and engagement in learning certainly makes me feel very appreciative of the students and teachers here at Mitcham PS.



### WORKING BEE

Thank you to the 18 Families who attended the Working Bee last Saturday afternoon, as always it was incredibly productive and lots of fun!



### ENROLMENTS

Traditionally, in school calendars the month of May is the time of year where schools are visited by many new prospective families, and certainly this week we have welcomed and shared our learning environment with lots of families looking for the right school for their children, we have taken many enrolments this week and anticipate that this will continue, if you have children starting Prep next year, or know of families wanting to enrol their children at Mitcham Primary School, we encourage you to collect and complete an enrolment form from the office or book in for a tour at the office.



# FROM THE PRINCIPAL'S DESK: CONTINUED

## PLAYGROUND SUPERVISION

Regretfully this week I have notice a large number of children being left in the school yard well before 8:30am, I would like to remind parents that children are not permitted to be left unsupervised in the yard before 8:30 am. Similarly can I please ask parents to remind their children that they are not to play on the playground equipment after school until after the 3:45 pm bell, the reason for this is so that we know that children walking home or walking to meet their parents have left straight away. If staff see children playing prior to 3:30pm they will direct them off the play equipment.

## TO OUR COMMUNITY

Our thoughts and prayers are extended to our local community and all others impacted by the recent events in Sri Lanka. As we pray for those who lost their lives in the horrific attacks, and for their families, as educators at Mitcham PS we are committed, to continuing to plant the seeds of peace in the hearts of our students.

**Erin Norman**

**Principal**

## TERM 1 FLASHBACK: GRADE 3/4 PROJECT EVENING





MITCHAM PRIMARY OPEN DAYS



**OPEN  
DAY**

Saturday 18 May  
10.00am - 1.00pm

**WORKING  
OPEN DAY**

Thursday 23 May  
10.00am - 1.00pm

**Mitcham Primary School**  
**PH. (03) 9873 1551**

**T** (03) 9873 1551

**E** [mitcham.ps@edumail.vic.gov.au](mailto:mitcham.ps@edumail.vic.gov.au)

**W** [mitcham.ps.vic.edu.au](http://mitcham.ps.vic.edu.au)

**Follow Us:**



# FROM THE ASSISTANT PRINCIPAL'S DESK

## **PREP/FOUNDATION INFORMATION NIGHT**

Next Thursday 9th May, we will be having a Prep/Foundation Information session for any new families wanting to know more about our school and the programs we run including our Prep/Foundation program. There will be an opportunity to ask questions as well. This session will be held in the library from 6.00pm – 7.00pm.

## **MOTHER'S DAY STALL**

The Mother's Day stall will be held on Thursday 9th and Friday 10th May. This is a great opportunity for your child to do their own shopping for Mother's Day. The items will range from \$1 to \$6 and it would be helpful if children brought a plastic bag for their purchases.

## **MITCHKIDS**

Our first Mitchkids for this year will be held next Friday, 10th May in the Art room from 10.00 – 11.00.

## **AFTER SCHOOL CHESS**

Chess Club started this week on Wednesday 1st May and will finish for Term 2, on Wednesday 26th June. We do have some vacancies so if your child would like to join Chess Club, please let the office know. I will notify you if your child has been successful in gaining a place this term.

## **NAPLAN**

NAPLAN testing will be held on Tuesday 14th, Wednesday 15th and Thursday 16th May. An information sheet will be sent home shortly to the parents of students in Grades 3 and 5. If you have any questions regarding NAPLAN please see your child's teacher or Mrs Wood.

## **EDUCATION WEEK - 18TH – 25TH MAY: OPEN DAYS**

On Saturday 18th May, we will be having our Open

Day from 10.00am – 1.00pm. This is a great opportunity to showcase our school and the great work that our students do.

On Monday 20th May, it will be our Grandparents and Special Friends' day from 11.30am – 1.00pm. We look forward to welcoming many visitors into our school and into the classrooms. We hope they can bring their lunch to have with the children after they complete the interesting activities in the grades.

On Thursday 23rd May, from 10.00 – 1.00, we will have our 'Working Open Day' where people can tour the school to see how the school operates on a 'normal' daily basis.

## **STUDENT SURVEY**

Every year primary school students from grades 4, 5 and 6, in Victorian Government schools, participate in a student survey. We value student voice as a means to improving student engagement, wellbeing and quality instruction and are conducting this survey helps us to find out about your child at our school. The Attitudes to School Survey is an annual student survey offered by the Department of Education and Training to assist schools in gaining an understanding of students' perceptions and experience of school. Our school will use the survey results to plan programs and activities to continue to improve all student's schooling experience. This will be completed in the next few weeks at school.

## **SCHOOL PHOTOS**

Just a reminder that our School Photo day will be on Friday 31st May. Photo ordering forms will be distributed to all students in the coming weeks.

**Heather Wood**

**Assistant Principal**



# HAPPY BIRTHDAY MITCHAM STUDENTS!



## APRIL

Olivia - Prep A

Matthew - 5/6 B

Claire - 1/2 C

Amelie - 4/6 A

Neha - 1/3 B

Isla - 1/3 B

Archer - 1/2 B

Zander - Prep C

Charlotte - 1/2

Lidia - 1/2 C

Alyssa - 3/4 B

Elena - 1/3 A

Samaira - 5/6 C



## MAY

Siya - 3/4 C

Lucah - 1/3 B

Eva - 4/6 B

Jyah - Prep A

Korban - 1/2 A

Augustine - 1/2 D



# MitchKids Playgroup



**May**

**Friday May 10  
Friday May 24**

**June**

**Friday June 7  
Friday June 21**

**10.00 - 11.00am**



**July**

**Friday July 19**



**Mitcham Primary School  
294 Mitcham Road, Mitcham  
Phone: 9873-1551**

**August**

**Friday Aug 2  
Friday Aug 16  
Friday Aug 30**

**September**

**Friday Sept 13**



# IMPORTANT DATES

DATE	EVENT
8 May	District Cross Country
9 May	Prep Information Evening
9 - 10 May	Mothers' Day Stall
10 May	Mitchkids Commences
14 May - 16 May	NAPLAN
17 May	Robotics Workshop
18 May	Open Day
20 May	Grandparents/Special Person Day
21 May	Robotics Workshop
22 May	National Simultaneous Storytime
23 May	Working Open Day & Morning Tea
31 May	School Photos
3 June - 6 June	Book Fair Open for Sales
10 June	Queen's Birthday Public Holiday
11 June	Student Free Day
14 June	Grade 5/6 Winter Sport
21 June	Grade 5/6 Winter Sport
25 June	Woolworths Earn and Learn Ends
26 June	After School Chess Finishes for Term 2
28 June	Last Day Term 2
15 July	First Day Term 3
19 July	The Ridiculous Rhyme Show Visit
17 - 23 August	Book Week

DATE	EVENT
23 August	Grade 5/6 Summer Sport
26 August - 28 August	Grade 3/4 Camp 1
28 August - 30 August	Grade 3/4 Camp 2
2 September	District Athletics
5 September	Grade 5/6 Performance
6 September	Grade 5/6 Summer Sport
20 September	Last Day Term 3
7 October	First Day Term 4
4 November	Student Free Day
6 November	Grade 3 - 6 Swimming Commences
15 November	Grade 3 - 6 Swimming Ends
18 November	Prep - 2 Swimming Commenced
29 November	Prep - 2 Swimming Ends
20 December	Last Day Term 4





# FROM THE MITCHAM PRIMARY OFFICE

## CSEF (CAMPS & SCHOOL EXCURSIONS FUND)

The Camps, Sports and Excursions Fund (CSEF) provides payments for eligible students to attend activities like:

- School camps or trips
- Swimming and school-organised sport programs
- Outdoor education programs
- Excursions and incursions.

Applications for 2019 are now open and will close on 28 June 2019 (end of Term 2). Families holding a valid means-tested concession card or temporary foster parents are eligible to apply.

Successful applicants will receive \$125 per year for eligible primary school students. Payments are made directly to the school and are tied to the individual student. Most payments start from March onwards.

Payments are for the application year and cannot be claimed for previous years.

The CSEF payment cannot be used towards voluntary school charges, books, stationery, school uniforms, before/after school care, music lessons, or formals/graduations.

You will only need to submit an application form in 2019 if any of the following changes have occurred:

- Your child has started or changed schools in 2019 or you did not apply at the same school in a previous year
- Changed family circumstances: such as a change of custody, change of name, concession card number, or new siblings commencing at the school in 2019.

We are able to accept and process applications up until the end of term two each year.

The payment system only allows one application per student. Parents in shared custody situations (who both hold a concession card) must make the decision beforehand who applies for the CSEF at the school on behalf of their children.

If you have already paid for some camp, sports or excursion costs up front, you have the option to:

- Allocate the payment towards remaining activities in 2019
- Carry over the amount to be used on eligible activities in 2020

Please note, CSEF funds cannot be directly refunded to families.

If you think you may be eligible, and are yet to apply, or would like more information, please see the information and application sheets enclosed in the later pages of this newsletter.

Alternatively, contact our school office for more information.

## STATE SCHOOLS' RELIEF

Prep students who are applicable for the CSEF fund may also be able to receive support for school uniforms through State Schools' Relief.

State Schools' Relief helps with the cost of new school uniforms, shoes and books for families who are facing hardship.

The Victorian Government has provided more than \$15.65 million to State Schools' Relief to help provide 100,000 students with free or discounted new school uniforms, shoes and books over four years (2015-19).

For students commencing prep in 2019, State Schools' Relief can provide a winter warmer uniform package:

- 1 x rugby top or windcheater or polo long sleeve
- 1 x tracksuit pants
- 1 x pair of shoes (lace up or t-bar or runner/sneaker)

To apply, make sure you lodge your application for CSEF before the closing date and ensure you speak to the office about a uniform pack.

If your application is successful, uniform items and vouchers may be given directly to you, or the school. The school will contact you to pass on the items.

Please see the ladies in our office for more information or assistance.



**A SPECIAL DAY AT  
MITCHAM PRIMARY SCHOOL**



**SAVE THE  
DATE**

**MONDAY 20 MAY**



**GRANDPARENTS AND  
SPECIAL VISITORS DAY!**



# EXTRA CURRICULAR ACTIVITIES 2019

CLUB/ACTIVITY	COST (Y/N)	DAY OF WEEK	WHEN	STUDENTS INVOLVED	ORGANISER
Before School Reading	N	Tuesday	Before school	All Welcome	Heather Wood
Bonsai Club	Y	TBC*	During school	Grade 5/6s	Marina Rich
Chess Club	Y	Wednesday	After school	All Welcome	Heather Wood
Five Six Mix Choir	N	Thursday	During lunch	Grade 5/6s	Natalie Wickham
Gardening & Sustainability Club	N	Monday	During lunch	All Welcome	Marina Rich, Laura Luscombe & Kate Medcalf
Hooptime	N	Thursday	During lunch	Selected	Laura Ellis
Hot Shots Tennis	Y	Multiple	During & After School.	All Welcome	Contact Office
Instrumental Music	Y	Various	During school	All Welcome	Contact Office
Junior School Council	N	Various	During school	Elected students	Jayne Koth, Tracey Irvine & Kate Medcalf
Kelly Sports	Y	Multiple	During lunch	All Welcome	Contact Office
Lunchtime Library Sessions	N	Wednesday & Friday	During lunch	All Welcome	Erin Norman
Media	N	Thursday	During school	Media Team	Tracey Irvine & Emma Bates
Mitcham Melodies Choir	N	Thursday	During lunch	Grade 3/4	Jess Yuen, Emma Bates & Deb Williamson
Mitcham Music Makers	N	TBC	During lunch	Grades 4-6	Natalie Wickham
New Zealand Exchange	Y	N/A	N/A	Grade 5/6s	Heather Wood
Peer Mediation	N	Various	During recess	Grade 6s	Tracey Irvine, Laura Luscombe & Marianne McKay
Perceptual Motor Program	N	Monday	During school	Preps	Val Berardini
Quiet Space	N	Tuesday, Wednesday & Thursday	During lunch	All Welcome	Michelle Dybing
Robotics Club	N	Friday	During lunch	TBC	Netanel Koles
Running Club	N	Friday	Before school	Grades 3-6	Laura Ellis & Tracey Irvine
Snack and Study	N	Thursday	After school	EAL Students	Michelle Dybing
Tournament of Minds	N	TBC	TBC	Grade 5/6s	TBC
Grade 5/6 Games	N	Friday	During Lunch	Grade 5/6	Paul Bremner (Volunteer)



# NEWS AND UPDATES

## WOOLWORTHS EARN & LEARN

This year we will be participating in the Woolworths Earn & Learn program. Through this program we will be able to get new educational resources for our school – and all we need you to do is to shop for your groceries at Woolworths.

From 1st May until 25 June, we are collecting Woolworths Earn & Learn Stickers. You will get one Woolworths Earn & Learn Sticker for every \$10 spent (excluding liquor, tobacco and gift cards). Place the Woolworths Earn & Learn Sticker onto a Woolworths Earn & Learn Sticker Sheet (coming home with your child today) and when it's complete, the Sticker Sheet can be dropped into the Collection Box here at the school or at the Woolworths in Eastland. Additional Sticker Sheets are available from the School Office.

At the end of the promotion, we'll be able to get some great new equipment. The range is extensive and offers lots of items ideal for our students – including resources for Maths, English, Science and some fantastic fun supplies for Arts & Craft, Sport and for our library. If you'd like to know more visit [woolworths.com.au/earnandlearn](http://woolworths.com.au/earnandlearn)

## MOTHERS' DAY STALL VOLUNTEERS NEEDED

Our Mother's Day stalls will be held on May 9th and May 10th during the school day. We have many lovely things available for your children to purchase for Mother's Day. Items are priced between \$1 - \$6. Please send money and a bag along with your child if you would like them to purchase a gift.

We are after some volunteers to help to run the stall and to assist the students with their purchasing. Younger siblings are welcome. We also require helpers to set up and pack up the stalls. Please sign up via the attached website:

[signupschedule.com/mitchamps](http://signupschedule.com/mitchamps)

Just click on the date that you can assist and leave your details. Volunteers, please note that the stall will be held in the P.A.C. this year. If you have any enquiries, don't hesitate to call Katie Lang on 0407 850 565 or email: [cardsfromkatie@gmail.com](mailto:cardsfromkatie@gmail.com)

## WORKING BEE

On Friday 17th May 3/4 B, 3/4 A, and 3/4C are scheduled for our next Working Bee, all families are welcome. Remember, many hands make light work. Start time is 3.30pm-6.30pm. We need help with weeding, plant trimming, sweeping, picking up rubbish, and moving items. The more families that attend the quicker it is to complete jobs. It is also a great opportunity to meet other families. Children are welcome to attend. Please note that the \$60 Working Bee Levy can be refunded following your attendance at two working bees throughout the year.

## MULLAUNA COLLEGE HIGH ACHIEVERS YR 7 CLASS FOR 2020

If your son/daughter is interested in applying for the Year 7 High Achievers class for 2020 at Mullauna College, testing will take place at 9.00am on Friday 10 May, 2019 at Mullauna College. Please complete the following online survey and you will be contacted via email regarding the testing closer to the test date:

[www.surveymonkey.com/r/HB8WD6L](http://www.surveymonkey.com/r/HB8WD6L)

## 2019 EDUCATION WEEK: 18TH - 25TH MAY

Every year Mitcham Primary School celebrates Education Week with a range of fun activities, we love having our families come and be a part of all the fun. Pencil the following dates into your diaries and we will distribute more information about these activities over the next few weeks.

- Saturday Open Day 18th May
- Grandparents' Day Monday 20th May
- Working Open Day and Morning Tea Thursday 23rd May
- Robotics Workshops Friday 17th May and Tuesday 21st – Friday 24th May

## LUNCH ORDER PROVIDER

Lunch orders are available on Monday, Wednesday and Friday. Simply [click here](#), or search the following address in your browser: [www.classroomcuisine.com.au](http://www.classroomcuisine.com.au)

## NEWS AND UPDATES

You will need to register an account in your name and select Mitcham Primary School. Once you are in your account there is a tab to add a child. Please add your children and select Mitcham Primary School and their grade.

Placing orders can be done up until 8.30 the morning of the lunch day.

The option to select future dates is available to place orders, if your child is not attending school on the future day you can cancel the order the morning of the absence.

Payment is required at the time of ordering with a credit card.

See our lunch order menu in the following pages.

### SCHOOL PHOTOS

This year the school photos will be taken on Friday 31st May. The company will send out packs

to all students closer the date. Please note this date in your diary.

### SCHOOL BANKING

Does your child want to be part of School Banking?

The school banking program is a great way to start creating good financial habits. There are also great reward items to redeem after each 10 deposits, as it is an incentive for banking regularly and not a monetary exercise.

School banking takes place every Wednesday.

Please add this event to your calendar every Wednesday.

If you would like your child to participate in School banking please go to the Commonwealth Bank and open an account in your child's name.



**PREP 2020**  
**Information Evening**

---

**THURSDAY**  
**9TH**  
**MAY, 2019**

---

**6.00 PM - 7.00 PM**

Mitcham Primary School Library  
294 Mitcham Road  
Mitcham, 3132

---

**Mitcham**  
**Primary School**  
think | learn | lead

PH. (03) 9873 1551 | E. [mitcham.ps@edumail.vic.gov.au](mailto:mitcham.ps@edumail.vic.gov.au)



Dear Mitcham OSHClub Parents,

Hello everyone! In the first full week back to school children were busy with reorganizing the room to maximise space for afternoon tea, with the weather changing soon we will not be able to have our frequent picnics! We are working on providing varied play areas based on children's interests, please feel free to pop in and provide us some suggestions or feedback.

We planned to work on space related activities this week, but as we were focusing on organising and cleaning the room before we open our new toys order, we will be working on space activities in Week 4.

We are eagerly waiting for the new playgrounds to be ready.

We are in the process of developing program specific philosophy. Any input for the same will be highly appreciated.

## UPDATE IN THE BOOKING POLICY FOR BSC AND ASC SESSIONS

- Parents will not be able to book online within 24 hours as the system is locked 24 hours before the session commence time.
- Parents can book their child(ren) into the program on the day by calling or texting 0422 097 497.
- Program times are from 7am—9am and 2:30pm—6:30pm, bookings will be confirmed during these times.
- A late booking fee of \$4 will automatically be charged when a booking is made at short notice (0-24 hrs ahead of the start time of the session). This fee was waived last term for goodwill as the CCS was stabilising – it is part of our usual T&C's.
- When a child is booked but does not attend, and there's been no notification that they will be absent, a \$5 'no-show' fee will be incurred.
- Our cancellation policy is now 48 hours before the session commences. Cancellations within 48 hours will incur full fee.

## UPDATING CONTACT DETAILS

Please remember to update your family's contact details, especially phone numbers, addresses, and any medical conditions on the enrolment form if there is any change. This can be done online at:

[www.oshclub.com.au](http://www.oshclub.com.au)

WEEK 2 : BEFORE SCHOOL CARE	
DAY	ACTIVITY
MONDAY	Caterpillar Book Marks (Mother's Day Theme) & Collect the Cones
TUESDAY	Mother's Day Cards & Night at the Museum
WEDNESDAY	'What are my favourite things about mum' & Giants Treasure
THURSDAY	'Reasons why I love you mum' Flower & 'Bout Me' Pass the Ball
FRIDAY	Mother's Day: Love Message Jars & Three Legged Race

WEEK 2 : AFTER SCHOOL CARE	
DAY	ACTIVITY
MONDAY	Mother's Day Gift & Fruit Salad
TUESDAY	Mothers Day: Certificates "The Best Mum" & Two on Two Basketball
WEDNESDAY	Mothers Day: My Mum's Favourite Food Placemats & Create your own ball game
THURSDAY	Mum you Rock! & Clothes Peg Races
FRIDAY	'My Mum' Portrait & Knitting

**Enrol Now:** [www.oshclub.com.au](http://www.oshclub.com.au)

**OSHClub Program Phone:** 0422 097 497

**OSHClub Head Office:** 1300 395 735

**Program Coordinator:** Jagruti

**Program Assistants:** Lekky and Jess (permanent), Jane, Maylee, Ashleigh, Jade and Maria (casuals).



**Commencing a Trial with MITCHAM PRIMARY in T1, 2019!**

**A Two Course Lunch is \$8.95 and a Three Course Lunch is \$10.35**

**AVAILABLE – MONDAY'S, WEDNESDAY'S & FRIDAY'S!**

**LUNCH ITEM ONE**

**SALADS**

Greek Style Salad with Feta and Olives (GF)  
Brown Rice & Mixed Bean Salad (GF)  
Thai Style Noodle Salad (GF)  
Quinoa, Tabouli & Tuna Salad (GF)  
Pasta Salad (GF)  
Pic(k)nic Box – Vegetarian (GF)  
Pic(k)nic Box with Ham (GF)

**SUSHI**

Sushi - Teriyaki Chicken Hand Rolls (2)  
Sushi - Cooked Tuna Hand Rolls (2)  
Sushi - Avocado Hand Rolls (2)  
Sushi - Cucumber Hand Rolls (2)  
Sushi – Vegetarian Hand Rolls (2)

**BAKERY**

Cheese and Bacon Roll  
Cheese and Vegemite Scroll  
Supreme Pizza Roll  
Topped with Only Cheese Roll

**PITA PIZZAS**

Margherita Pita Pizza  
Ham and Pineapple Pita Pizza  
Fresh Tomato and Italian Herb Pita Pizza  
Spinach & Feta Pita Pizza

**SANDWICHES, ROLLS & WRAPS**

Ham, Cheese and Tomato Sandwich  
Turkey, Cranberry, Lettuce and Cheese Sandwich  
Ham and Cheese Roll  
Gluten Free Ham & Cheese Sandwich (GF)  
Simple Salad Roll  
Gluten Free Ham & Cucumber Sandwich (GF)  
Vegemite Sandwich  
Mild Salami and Salad Roll  
Beetroot and Salad Roll  
Roast Beef, Fruit Chutney, Cheese and Lettuce Roll  
Cheese and Salad Roll  
Wholegrain Cheese and Tomato Sandwich  
WRAP (GF) Ham and Salad  
Chicken and Salad Roll  
Wholegrain ROLL Tuna and Salad  
Salad with Ham (No Cheese) ROLL

**LUNCH ITEM TWO/THREE**

**FRESH FRUIT & VEG**

Fresh Fruit Combo  
Freshly chopped Orange Segments  
Freshly chopped Strawberries with Green Grapes  
Apple with Lemon Juice, Brown Sugar & Cinnamon  
Freshly chopped Cantaloupe & Watermelon  
Freshly Chopped Watermelon pieces  
Chopped Carrot, Cucumber, Red & Yellow Capsicum  
Freshly chopped Pineapple with Orange Pieces  
Lightly Steamed Corn Wheels & Broccoli  
Sugar Snap Peas, Beans & Cherry Tomatoes  
Cherry Tomatoes with Tasty Cheese & Rice Crackers

**BAKED GOODS**

Choc Chip Cookie  
Fruit Bun  
Hedgehog Slice  
Finger Bun with Sprinkles  
Banana Cup Cake (GF, DF)  
Iced Cup Cake  
Choc Cup Cake (GF,DF)  
Blueberry Muffin  
Apple & Cinnamon Cake

**YOGHURT**

Chobani Yoghurt - Strawberry  
Chobani Yoghurt - Blueberry  
Chobani Yoghurt - Passionfruit  
Chobani Yoghurt – Plain  
Chia, Banana, Coconut and Strawberry Bowl

**DIPS & CRACKERS**

Tzatziki dip with Rice Crackers  
Avocado dip with Rice Crackers  
Spring Onion dip with Rice Crackers  
Moroccan Carrot dip with Rice Crackers

**POPCORN/SNACKS**

Cobs Popcorn, Lightly Salted  
Cobs Popcorn Slightly Sweet, Lightly Salted  
Lightly salted Fav'va Beans

**DRINKS**

Apple Juice  
Orange Juice  
Nippy's Chocolate Milk

For more information check out our website

**www.classroomcuisine.com.au**



## FINANCIAL ASSISTANCE INFORMATION FOR PARENTS

Every Victorian child should have access to the world of learning opportunities that exist beyond the classroom. The Camps, Sports and Excursions Fund helps ensure that no student will miss out on the opportunity to join their classmates for important, educational and fun activities. It is part of making Victoria the Education State and the Government's commitment to breaking the link between a student's background and their outcomes.

### CAMPS, SPORTS & EXCURSIONS FUND (CSEF)

School camps provide children with inspiring experiences in the great outdoors, excursions encourage a deeper understanding of how the world works and sports teach teamwork, discipline and leadership. All are part of a healthy curriculum.

CSEF is provided by the Victorian Government to assist eligible families to cover the costs of school trips, camps and sporting activities.

If you hold a valid means-tested concession card or are a temporary foster parent, you may be eligible for CSEF. A special consideration category also exists for asylum seeker and refugee families. The allowance is paid to the school to use towards expenses relating to camps, excursions or sporting activities for the benefit of your child.

The annual CSEF amount per student is:

- \$125 for primary school students
- \$225 for secondary school students

### MORE INFORMATION

For more information about the CSEF visit [www.education.vic.gov.au/csef](http://www.education.vic.gov.au/csef)

### HOW TO APPLY

New applicants should contact the school office to obtain a CSEF application form or download from [www.education.vic.gov.au/csef](http://www.education.vic.gov.au/csef)

If you applied for the CSEF at your child's school in 2018, you do not need to complete an application form in 2019 unless there has been a change in your family circumstances.

You only need to complete an application form if any of the following changes have occurred:

- **new student enrolments;** your child has started or changed schools in 2019 or you did not apply in 2018.
- **changed family circumstances;** such as a change of custody, change of name, concession card number, or new siblings commencing at the school in 2019.

Check with the school office if you are unsure.



## CAMPS, SPORTS AND EXCURSIONS FUND (CSEF) APPLICATION FORM

School Name

School REF ID

### Parent/legal guardian details

Surname \_\_\_\_\_

First name \_\_\_\_\_

Address \_\_\_\_\_

Town/suburb \_\_\_\_\_ State \_\_\_\_\_ Postcode \_\_\_\_\_

Contact number \_\_\_\_\_

Centrelink pensioner concession **OR** Health care card number (CRN)

-  -  -  **OR**

☐ Foster parent\* **OR** ☐ Veterans affairs pensioner

\*Foster Parents must provide a copy of the temporary care order letter from the Department of Health and Human Services (DHHS).

### Student details

Child's surname	Child's first name	Student ID	Date of birth (dd/mm/yyyy)	Year level

I authorise the Department of Education and Training (DET) to use Centrelink Confirmation eServices to perform an enquiry of my Centrelink customer details and concession card status in order to enable the business to determine if I qualify for a concession, rebate or service. I also authorise the Australian Government Department of Human Services (DHS) to provide the results of that enquiry to DET.

I understand that:

- DHS will use information I have provided to DET to confirm my eligibility for the Camps, Sports and Excursions Fund and will disclose to DET personal information including my name, address, payment and concession card type and status.
- this consent, once signed, remains valid while my child is enrolled at a registered Victorian school unless I withdraw it by contacting the school.
- I can obtain proof of my circumstances/details from DHS and provide it to DET so that my eligibility for the Camps, Sports and Excursions Fund can be determined.
- if I withdraw my consent or do not alternatively provide proof of my circumstances/details, I may not be eligible for the Camps, Sports and Excursions Fund provided by DET.
- information regarding my eligibility for the Camps, Sports and Excursions Fund may be disclosed to the Victorian Department of Health and Human Services and/or State Schools Relief for the purpose of evaluating concession card services or confirming eligibility for assistance.

You are able to request access to the personal information that we hold about you, and to request that any errors be corrected, by contacting your child's school.

Signature of applicant \_\_\_\_\_

Date \_\_\_\_ / \_\_\_\_ / \_\_\_\_



## CSEF ELIGIBILITY

Below is the criteria used to determine a student's eligibility for the Camps, Sports and Excursions Fund (CSEF).

### Criteria 1 – Eligibility

To be eligible\* for the fund, a parent or legal guardian of a student attending a registered Government or non-government Victorian primary or secondary school must:

- on the first day of Term one, or;
- on the first day of Term two;
- a) Be an eligible beneficiary within the meaning of the *State Concessions Act 2004*, that is, be a holder of Veterans Affairs Gold Card or be an eligible Centrelink Health Care Card (HCC) or Pensioner Concession Card (PCC) holder, OR
- b) Be a temporary foster parent, and;
- c) Submit an application to the school by the due date.

\* A special consideration eligibility category also exists. For more information, see: [www.education.vic.gov.au/csef](http://www.education.vic.gov.au/csef)

Parents who receive a Carer Allowance on behalf of a child, or any other benefit or allowance not income tested by Centrelink, are not eligible for the CSEF unless they also comply with one of (a) or (b) above.

### Criteria 2 - Be of school age and attend school in Victoria

School is compulsory for all Victorian children aged between six and 17 years of age inclusive.

For the purposes of CSEF, students may be eligible for assistance if they attend a Victorian registered primary or secondary school. Typically, these students are aged between five and 18 years inclusive.

CSEF is not payable to students attending pre-school, kindergarten, home schooled, or TAFE.

### Eligibility Date

For concession card holders CSEF eligibility will be subject to the parent/legal guardian's concession card being successfully validated with Centrelink on the first day of either term one (29 January 2019) or term two (23 April 2019).

## PAYMENT AMOUNTS

### CSEF payment amount

The CSEF is an annual payment to the school to be used towards camps, sports and/or excursion expenses for the benefit of the eligible student.

- Primary school student rate: \$125 per year.
- Secondary school student rate: \$225 per year.

The CSEF is paid directly to your child's school and will be allocated by the school towards camps, sports and/or excursion costs for your child.

**For ungraded students**, the rate payable is determined by the student's date of birth. For more information, see: [www.education.vic.gov.au/csef](http://www.education.vic.gov.au/csef)

**Year 7 government school students** who are CSEF recipients are also eligible for a uniform voucher. Secondary schools are required to make applications on behalf of parents so please register your interest at the school.

## HOW TO COMPLETE THE APPLICATION FORM

### NOTE: ALL SECTIONS MUST BE COMPLETED BY PARENT/LEGAL GUARDIAN

1. Complete the PARENT/LEGAL GUARDIAN DETAILS section.  
Make sure that the Surname, First Name, and Customer Reference Number (CRN) details match those on your concession card. You will also need to provide your concession card to the school.  
If you are claiming as a Foster Parent or a Veteran Affairs Pensioner, you will need to provide a copy of documentation confirming your status as a temporary Foster Parent or provide your Veterans Affairs Pensioner Gold card to the school.
2. Complete the STUDENT/S DETAILS section for students at this school.
3. Sign and date the form and return it to the school office as soon as possible. The CSEF program for 2019 closes on 28 June, 2019.

CSEF payments cannot be claimed retrospectively for prior years.

**Queries relating to CSEF eligibility and payments should be directed to the school.**



## MAY FREE TRIAL

**Trial Kumon English or Maths over two weeks during May.**

Find out how we can develop in your child:

- calculation and reading ability
- concentration
- a daily study and reading habit
- the confidence to learn independently.

Just follow these four easy steps to register:

1. Call your Kumon Instructor to register for an information session.
2. Have your child assessed for Kumon English or Maths and discuss a study plan.
3. Arrange for your child to attend four consecutive class sessions during May.
4. Meet with your Instructor to discuss your child's Kumon experience.

**Limited spaces available. Contact your local Kumon Centre now to register your child.**

## KUMON MITCHAM EDUCATION CENTRE

Instructor: Seema Arora

**mob: 0411 110 872**

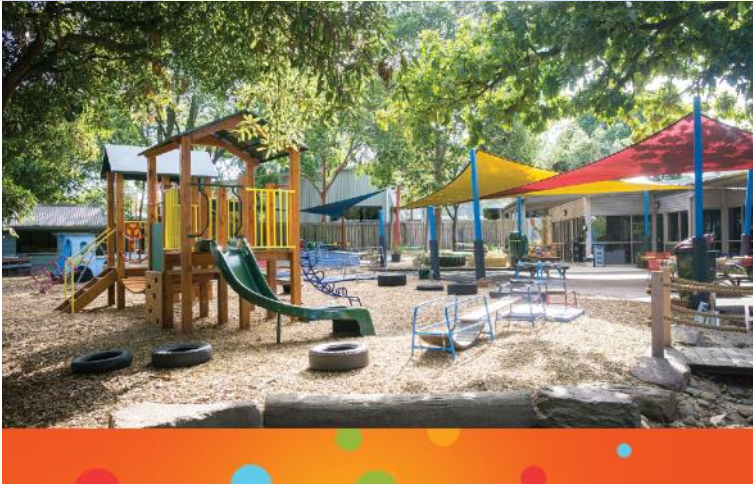
**kumonmitcham@gmail.com**

Terms and conditions apply.

<http://au.kumonglobal.com>



## FROM THE COMMUNITY



Greenwood Park Kindergarten

# OPEN DAY

Saturday, 25<sup>th</sup> May

10am to 12pm

5A Greenwood Avenue, Ringwood

Ph: 9870 8881



## 2019

Donvale Reserve, Noonan Way

Saturday Morning Sessions - Starting April 27<sup>th</sup> @ 9.30am

No sessions during School Holidays and Long Weekends

Eligible for all Boys and Girls born between 2010 - 2014

Auskick Registration online via [www.aflauskick.com.au/register](http://www.aflauskick.com.au/register) (enter Postcode 3111, Donvale Magpies)  
Enquires: Hayden Cotsford - 0401 615 952 or Adrian Daniels - 0419 106 830



Come Join us!



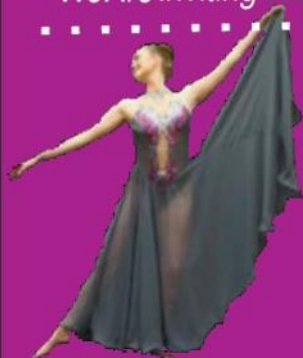
# Ellanda

Calisthenics College

## FREE COME AND TRY CLASSES

If you like to dance, sing, and have lots of fun, then calisthenics is for you

*We Are Inviting Students, To Come And Join Our Classes, To Share In The Fun Of Calisthenics*



All classes are held at St Timothy's Primary School, Vermont  
No sewing required  
Fees include all costume hire



**TINIES: 3-7 yrs**

Tuesday 4.30 - 5.30

**SUB JUNIORS: 7-10 yrs**

Monday 4.30 - 6.30

**JUNIORS: 10-13 yrs**

Tuesday 5.30 - 7.30

**INTERMEDIATES: 13-16 yrs**

Monday 6.30 - 8.30

**SENIORS: 16 yrs & over**

Tuesday 7.30 - 9.30

**MASTERS: 26 yrs +**

Monday 7.30 - 9.00

**CONTACT PERSONS: Michelle: 0417 883 393 Pam: 9540 8212 | [www.ellandacc.com](http://www.ellandacc.com) | [ellandacc@gmail.com](mailto:ellandacc@gmail.com)**

T (03) 9873 1551

E [mitcham.ps@edumail.vic.gov.au](mailto:mitcham.ps@edumail.vic.gov.au)

W [mitcham.ps.vic.edu.au](http://mitcham.ps.vic.edu.au)

Follow Us:

