



**Mitcham**  
Primary School  
thinkers | learners | leaders

MITCHAM PRIMARY SCHOOL NEWSLETTER

# Mitchat

## IMPORTANT DATES

- MAR 4** ATHLETICS CARNIVAL
- MAR 5** CLEAN UP PARK DAY
- MAR 9** LABOUR DAY HOLIDAY
- MAR 10** STUDENT FREE DAY
- MAR 13** AUSSIE DRESS UP DAY
- MAR 17** GRIP LEADERSHIP CON.
- MAR 19** HARMONY DAY
- MAR 20** BULLYING NO WAY DAY
- MAR 23** 3-WAY CONFERENCES
- MAR 27** CROSS COUNTRY
- MAR 27** LAST DAY TERM 1
- APR 14** FIRST DAY TERM 2
- APR 16** STUDENT FREE DAY
- APR 25** PUBLIC HOLIDAY
- MAY 11** DISTRICT CROSS COUNT.
- MAY 17** NZ STUDENTS ARRIVE

...SEE PAGE 5 FOR MORE

VALUE OF THE  
MONTH

**PATIENCE**



## IN THIS ISSUE

- FROM THE PRINCIPAL'S DESK
- NEWS & UPDATES
- AUSSIE DRESS UP DAY
- FROM THE MITCHAM PRIMARY OFFICE
- OSHCLUB NEWS
- ... AND MORE



# FROM THE PRINCIPAL'S DESK

## THE CYBER SAFETY PROJECT

Our students experienced a wonderfully informative and interactive session with The Cyber Safety Project on Wednesday. The entertaining atmosphere and opportunity to interact, discuss problems and brainstorm solutions ensured that students were totally engaged. The energy and storytelling ability of Sam and Trent, the presenters, allowed students to connect with them and feel empowered to be safe and responsible digital citizens when using digital technologies.

As a staff, we also undertook a professional learning session and left equipped with the tools and resources to develop proactive strategies for the safe and engaging use of digital technologies.

In the evening, Trent presented to a very large group of our parent community with tips and strategies for fostering a positive and safe environment for digitally engaged children in the home. It was terrific hearing Trent articulate the importance of knowing whether children are consuming or creating online and based on this understanding, deciding together with your children, how much screen time is appropriate. All the content was relevant and very up to date, especially with recent changes and updates to apps such as YouTube, Snapchat and Instagram, and gaming programs such as 'Fortnite'. We were offered excellent advice, tips and tricks about what parents and teachers can do to help their children and students at all ages.

If you were unable to attend on the night, you might like to access The Cyber Safety Project Blog and website:

[www.cybersafetyproject.com.au/blog](http://www.cybersafetyproject.com.au/blog)

## PARENT HELPER TRAINING

Research has shown that parents who take an active role in their child's school life increase their child's ability to learn and have a positive effect on academic achievement. At Mitcham Primary, we encourage parents to actively support student learning by becoming involved in a range of school and classroom activities and greatly appreciate the parents and community members who assist and support our programs. Thank you

to all the parents, grandparents, carers and friends who have made time to attend our Parent Helper Training Sessions. Kathy Lawson has had a full house for every session; it is very heart-warming to know that we have such a dedicated community, so willing to support our school. I am looking forward to seeing you all helping classrooms, at our sporting events or in whatever capacity you feel you can contribute.

## 2020 MITCHAM PRIMARY SCHOOL COUNCIL COMPOSITION

Nominations for the 2020 Mitcham Primary School Council closed on the afternoon of Friday 14 February. This year the number of nominations we received equalled the number of vacant positions, as such, we do not need to go to an election and I am happy to announce the composition of the 2020 Mitcham Primary School Council is as follows:

### Parent Members:

- Lucille Matthews
- Joel Curtis
- Stacie Timmins
- Katie Lang
- Heba Elhakim
- Eb Banful
- Ford Zheng

- Nasra Higgins

- Chloe Rees

### DET Members:

- Erin Norman
- Heather Wood
- Lauren Lamont
- Deborah Williamson

## NEW FURNITURE

Thank you to all the students and parents of students in 3/4A and 3/4C for your understanding with the delay in the arrival of the furnishings for your new classrooms. We are very happy that the furniture has arrived today!

Wishing all families a restful weekend.

**Erin Norman:**  
**Principal**



# IMPORTANT DATES

DATE	EVENT
4 March	Grade 3-6 Athletics
5 March	Clean Up Halliday Park (in lieu of Clean Up Australia Day)
9 March	Labor Day Public Holiday
10 March	Student Free Day
13 March	Aussie Dress Up Day
17 March	GRIP Leadership Conference
19 March	Harmony Day
20 March	Bullying No Way Day
23 March	3-Way Conferences
27 March	Cross Country MPS Earth Day Last Day Term 1
14 April	First Day Term 2
16 April	Student Free Day
22 April	Hockey Gala Day (selected students only)
25 April	ANZAC Day Public Holiday
11 May	District Cross Country
17 May	New Zealand Exchange Students Arrive
24 May	New Zealand Exchange Students Depart
27 May	National Simultaneous Story Time
1 June	Grade 5/6 Camp Departs
5 June	Grade 5/6 Camp Returns

DATE	EVENT
8 June	Queen's Birthday Holiday
12 June	Grade 5/6 Winter Sports
22 June	Grade 5/6 Winter Sports
26 June	Last Day Term 2
13 July	First Day Term 3
22 July	Grade 3/4 Camp Departs
24 July	Grade 3/4 Camp Returns
22—28 August	Book Week Begins
31 August	District Athletics
4 September	Grade 5/6 Summer Sports
11 September	Grade 5/6 Summer Sports
18 September	Last Day Term 3
5 October	First Day Term 4
30 October	New Zealand Exchange Students Depart Australia
3 November	Melb. Cup Day Holiday
4 November	Grades 3 - 6 Swimming Program Commences
6 November	New Zealand Exchange Students Return to Aus.
22 November	Grades 3 - 6 Swimming Program Concludes
23 November	Prep - 2 Swimming Program Commences
27 November	Prep - 2 Swimming Program Concludes
18 December	Last Day Term 4



# NEWS AND UPDATES

## VISITING PRIMARY SCHOOL NURSE

Michelle Chappell, a visiting primary school nurse from the Department of Education and Training, will be attending the school to conduct the Prep health assessments and to see other children as requested by teachers (with parents' consent).

The purpose of the visit is to provide children in their first year of primary school with the opportunity to have a health assessment; to link children, families and school communities to services available in the community; and to provide information and advice that promotes health and wellbeing.

The confidential questionnaire, coming home with Prep students shortly, will provide important information about your child's health so the nurse can make an effective assessment. If your child requires further assessment, such as vision, hearing or speech assessments the nurse will see him or her at school.

If you would like your child to participate in the Primary School Nursing Program please indicate this by ticking the YES consent box (page 5), sign and fill out the questionnaire and return the completed student entrant health questionnaire to your child's school.

If you do not wish your child to participate in the Primary School Nurse Program please tick the NO consent box (page 5), sign and return the student entrant health questionnaire to your child's school.

Parents are invited to contact the visiting primary school nurse if there are any issues they wish to discuss. The contact number is 0412161467.

Please ensure the questionnaire is given to your child's school teacher in the sealed envelope by the specified return date.

## SCHOOL BANKING

Does your child want to be part of School Banking? The school banking program is a great way to start creating good financial habits.

School banking starts on **Wednesday 12 February** and takes place **every Wednesday**.

Please add this event to your calendar.

If you're interested in your child taking part in School Banking, visit your local Commonwealth Bank branch and ask to open up a School Banking or 'Dollarmites' account for your child.

There are also great reward items to redeem after each 10 deposits, as it is an incentive for banking regularly and not a monetary exercise.

[Click here](#) to find out more about signing your child up.

We're excited to share that the new School Banking theme for 2020 is Treetop Savers. The new range of rewards are designed to appeal to all ages. In response to your feedback in the Customer Experience Surveys, we've made this year's rewards more eco-friendly and sustainable. All rewards are reusable and packaged using sustainably sourced paper.

- Terry Denton's Activity Book – Term 1
- Mini Soccer Ball – Term 1
- Treetop Stationery Set – Term 2
- Treetop Handball – Term 2
- Tomato Seed Kit – Term 3
- Magic Mist Drink Bottle – Term 3
- Emoji Wallet – Term 4
- Snakes & Ladders Game – Term 4



## NEWS AND UPDATES: CONTINUED

### COMPASS

As you are aware, we are now using many more functions of the Compass Student Management System. From next week, we will be using the Compass Student Management System as the main form of communication between teachers and parents. Teachers will be able to use Compass to send emails to parents. Parents will also be able to use Compass to email their child's teacher.

Please take some time to review the Mitcham Primary School '[Communicating with School Staff Policy](#)', available on our school website.

### ICY POLE FRIDAY

Icy Pole Friday is BACK! We will be selling a variety of water icy poles and popcorn every Friday for \$1.

Should you need to check ingredients for allergy purposes, the brand is Coles Smart Buy.



**Mitcham**  
**Primary School**

thinkers | learners | leaders

### ADVERTISING NOTE

The Department of Education and Training and Early Childhood Development (DEECD) does not endorse the products or services of any private advertisers. No responsibility is accepted by DEECD for accuracy of information.

## HAPPY BIRTHDAY!





MITCHAM PRIMARY SCHOOL PRESENTS

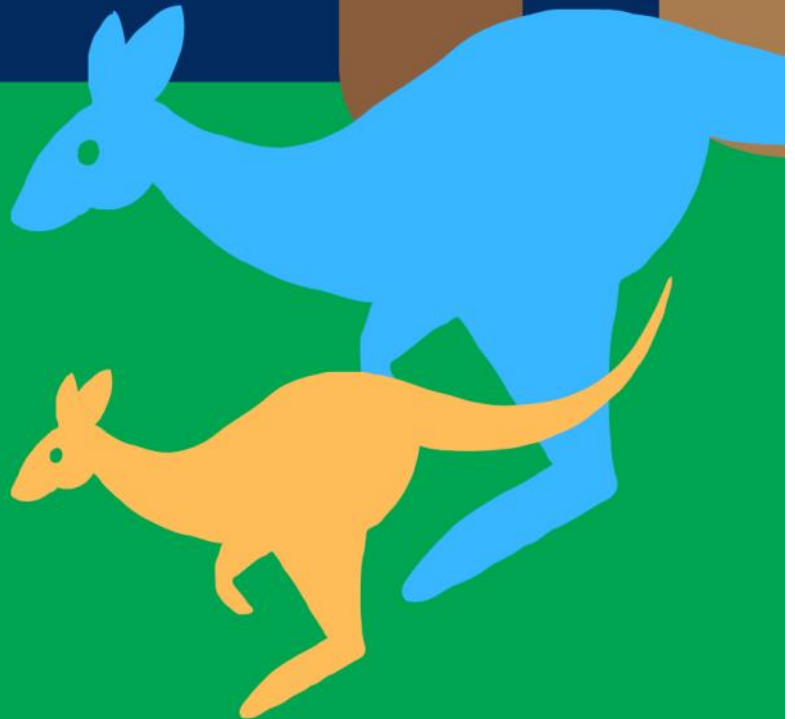
# AUSSIE DRESS UP DAY

FRIDAY 13 MARCH

COME TO SCHOOL  
DRESSED AS SOMETHING  
'AUSTRALIAN'.

BRING A GOLD COIN DONATION.

As a school we are aware of dozens of wildlife shelters and carers around the state that have been affected by the Victorian bush fires and extreme heat events. The Junior School Council has decided to do a dress up day to raise some much needed funds for Wildlife Victoria.



# FROM THE MITCHAM PRIMARY OFFICE

## CSEF (CAMPS & SCHOOL EXCURSIONS FUND)

The Camps, Sports and Excursions Fund (CSEF) provides payments for eligible students to attend activities like:

- School camps or trips
- Swimming and school-organised sport programs
- Outdoor education programs
- Excursions and incursions.

Applications for 2020 are now open and will close at the end of Term 2. Families holding a valid means-tested concession card or temporary foster parents are eligible to apply.

Successful applicants will receive \$125 per year for eligible primary school students. Payments are made directly to the school and are tied to the individual student. Most payments start from March onwards.

Payments are for the application year and cannot be claimed for previous years.

The CSEF payment cannot be used towards voluntary school charges, books, stationery, school uniforms, before/after school care, music lessons, or formals/graduations.

You will only need to submit an application form in 2020 if any of the following changes have occurred:

- Your child has started or changed schools in 2020 or you did not apply at the same school in a previous year
- Changed family circumstances: such as a change of custody, change of name, concession card number, or new siblings commencing at the school in 2020.

We are able to accept and process applications up until the end of term two each year.

The payment system only allows one application

per student. Parents in shared custody situations (who both hold a concession card) must make the decision beforehand who applies for the CSEF at the school on behalf of their children.

If you have already paid for some camp, sports or excursion costs up front, you have the option to

- Allocate the payment towards remaining activities in 2019
- Carry over the amount to be used on eligible activities in 2020

Please note, CSEF funds cannot be directly refunded to families.

If you think you may be eligible, and are yet to apply, or would like more information, please see the information and application sheets enclosed in the later pages of this newsletter. Alternatively, contact our school office for more information.

## CENTREPAY

Centrepay is a free bill paying service that allows applicable families to pay bills and other costs, direct from their Centrelink payments.

Using Centrepay you can arrange regular deductions from your Centrelink payment. You can start, change, or stop using Centrepay whenever you like. You can use it for your regular bills and other ongoing expenses, such as rent, electricity, phone and school fees.

Contact the Mitcham Primary School Office, or [click here](#) for more information.

## COMPASS

Have you logged into Compass yet? Compass is our new all-purpose communication platform for families at Mitcham Primary School. Using the login details provided on the letter sent home, [click here](#) or visit: [mitchamps-vic.compass.education](https://mitchamps-vic.compass.education) to log in and familiarise yourself with the platform.

# MITCHAM PRIMARY SCHOOL

## UNIFORM ORDER FORM 2020

Pricing Effective from February the 1st 2020

Student Name: \_\_\_\_\_ Grade: \_\_\_\_\_ Date: \_\_\_\_\_ Send to School ☐

Family Name: \_\_\_\_\_ Contact Ph No: \_\_\_\_\_

Email: \_\_\_\_\_

SCHOOL UNIFORM ORDERS CAN BE PLACED ONLINE AT: [rhsports.com.au](http://rhsports.com.au)

Your school uniform is available at RHSports: Unit 12/100 New Street, Ringwood 3134. Open Monday - Friday: 9am-5pm Ph: 03 9870 1377.

Delivery to school is freight free, orders are sent weekly.

Please refer to our website for full details on delivery costs, refunds, returns and warranty queries.

	Style No.	Garment	Colour	Size C = Child Fit, A = Adult Fit	Price inc GST	ORDER		
						SIZE	QTY	TOTAL
GIRLS	RETMI-DR01	Summer Dress	Bottle / White 0097	C4-C6 C8-C10 C12-C16 A12-A18	\$48.00 \$50.00 \$54.00 \$56.00			
	TU-RH06	Winter Tunic	Bottle / Black / White 1009-9005	C4-C6 C8-C10 C12-C16 A12-A16	\$60.00 \$62.00 \$64.00 \$66.00			
	PA-RH03	Active Stretch Pant	Bottle	C4-C16 A12-A14	\$29.00 \$31.00			
	SK-SP01	Skort	Bottle	C4-C14 S-L	\$26.00 \$28.00			
	CU-RH01	Culotte	Bottle	C4-C16 A14-A18	\$28.00 \$30.00			
BOYS	PA-AG04	Trackpant Straight Leg Reinforced Knee	Bottle	C4-C16	\$28.00			
	SH-RH03	Gaberdine Short	Bottle	C4-C16 A14-A18	\$22.00 \$24.00			
UNISEX	RETMI-PS02	Acacia House Sports Polo (Grades 3-6)	Dark Bottle / Yellow / White	C8-C14 XS-2XL	\$48.00 \$50.00			
	RETMI-PS03	Grevillea House Sports Polo (Grades 3-6)	Dark Bottle / Red / White	C8-C14 XS-2XL	\$48.00 \$50.00			
	RETMI-PS04	Banksia House Sports Polo (Grades 3-6)	Dark Bottle / Emerald / White	C8-C14 XS-2XL	\$48.00 \$50.00			
	RETMI-PS05	Eucalyptus House Sports Polo (Grades 3-6)	Dark Bottle / Sapphire / White	C8-C14 XS-2XL	\$48.00 \$50.00			
	RETMI-PS01	Short Sleeve Polo	Bottle <input type="checkbox"/> or White <input type="checkbox"/>	C4-C16 A14-A20	\$32.00 \$34.00			
	RETMI-PL01	Long Sleeve Polo	Bottle <input type="checkbox"/> or White <input type="checkbox"/>	C4-C16 A14-A18	\$34.00 \$36.00			
	RETMI-WI01	Windcheater	Bottle	C4-C16 A14-A18	\$29.00 \$33.00			
	RETMI-BJ01	Bomber Jacket	Bottle	C4-C16 A14-A18	\$46.00 \$50.00			
HATS, BAGS & ACCESSORIES	SM-RH01	Art Smock	Red <input type="checkbox"/> or Royal <input type="checkbox"/>	S, M, L	\$19.00			
	RETMI-HA04	Legionnaire Hat	Bottle	One Size	\$13.50			
	RETMI-HA03	Bucket Hat	Bottle	S/M, L/XL	\$14.00			
	RETMI-BA01	School Bag – Nyda Active Pak Lite Primary	Bottle	One Size – 25 Litre	\$45.00			
	SO-SP04	Turnover Ankle Socks 2pk	White	9-12, 13-3, 2-8, 7-11	\$12.00			
	SO-AF01	Foldover Ankle Socks 3pk	White	9-12, 13-3, 2-8, 7-11	\$15.00			
	TI-PB01	Tights – Cotton Blend	Bottle	4-6, 7-10, 11-14	\$12.00			

Credit Card: <input type="checkbox"/> VISA <input type="checkbox"/> Master Card	*We do not accept cheques, AMEX or Diners	Total Amount: \$ _____
Card Number: <input type="text"/>	CCV: <input type="text"/>	
Card Holder's Name: _____	Card Holder's Signature: _____	Expiry Date: <input type="text"/>



Dear Mitcham OSHClub Parents,

This week at OSHClub, children were busy working on the healthy eating theme. The healthy eating pyramid, and making paper plates showing healthy food was the main focus of the children.

Another thing we have been working on, is creating an OSHClub family tree in the corridor. The children have been very excited about seeing their faces stuck up on the tree. We are very thankful of Ash in setting it up.

We also discussed with the children about the new routine. It seems all the children are happy with the new routine which is working really well by splitting the children between the hall and OSH room to break up the numbers. Preps-Grade 2s have been coming to the OSH room in the afternoons, whilst the Grade 3-6's are being signed in at the hall and having their afternoon tea and then are offered to come back to OSH room for the indoor activities or go with outdoor play. Any feedback or suggestion regarding our new routine is welcomed.

All the Preps will be picked up from their classes in the afternoon and dropped to their classes in the morning when attending they are booked into OSHClub.

## PUPIL FREE DAY

We have been informed of an upcoming Pupil Free Day at Mitcham OSHClub on Tuesday 10th of March 2020, which will run if we receive a minimum of 15 bookings for the day. Please refer to the attached flyer for more information.

## AUTUMN VACATION CARE

Bookings are now open for the Autumn School Holidays at MITCHAM OSHCLUB. Please find the attached brochure outlining all the exciting activities, incursions and excursions on offer each day. To place the bookings you require please log into your account.

## UPDATING MEDICAL RECORDS

We are in the process of updating our medical records. Please set aside a few minutes when picking up your child, in case we need you to go through the forms. Also, if your child/ren is going to attend any after school activities like, tennis, chess, Kelly sports or karate please let us know so that we can cater to their needs and get permission forms ready to sign.

## SUN SMART POLICY

A kind reminder that during Term 1 we will be

following our Sun Smart Policy. So, please remember to provide a hat for your child. We supply Coles' branded 50+ protection sunscreen here at the service, however, if your child has specific sunscreen needs we encourage parents to either leave some with us at the program or ensure that children have some in their bags when they arrive.

## BOOKING INTO OSHCLUB

Remember, ensuring your children are booked to attend OSHClub helps us cater for your children's needs and ensure we are compliant with national regulations and OSHClub policy. If you are having difficulty using the OSHClub online booking system, please call head office on **1300 395 735**. Otherwise, you can book your child into the program on the day by calling or texting 0422 097 497. Program times are from 7.00am - 9.00am and 2.30pm - 6.30pm, bookings will be confirmed during these times. Please notify the program if your child will be absent if you are unable to cancel the booking online. A courtesy phone call, voicemail or text will be highly appreciated and allow our team to focus on the children in attendance.

WEEK 5: BEFORE SCHOOL CARE	
DAY	ACTIVITY
MONDAY	Autumn Leaf Bookmark & Handprint
TUESDAY	Autumn Colouring Pages & Moovosity
WEDNESDAY	Autumn Wreath & Moovosity
THURSDAY	Leaves: Changing Colour & Moovosity
FRIDAY	Autumn Memory Game & Gaga Ball

WEEK 5: AFTER SCHOOL CARE	
DAY	ACTIVITY
MONDAY	Autumn Word Search & Barley Break
TUESDAY	Leaf Bowl & Bean Bag Tic Tac Toe
WEDNESDAY	Autumn Collage & Collect the Cones
THURSDAY	Autumn Greeting Card & Footy Skills
FRIDAY	Foil Leaf Art & Tennis

**Enrol Now:** [www.oshclub.com.au](http://www.oshclub.com.au)

**OSHClub Program Phone:** 0422 097 497

**OSHClub Head Office:** 1300 395 735

# OSHCLUB NEWS: PUPIL FREE DAY

## UPCOMING PUPIL FREE DAY

Dear Mitcham OSHClub Families,

We have been informed of an **upcoming Pupil Free Day** on **Tuesday 10 March 2020**, and we are planning to run a full day of care on this day, however this is dependent on the number of bookings received. We require a minimum of 15 children to run the day.

**Session date:** Tuesday 10 March, 2020

**Book before:** 5.00pm, Tuesday 3 March, 2020

### Fees and session times:

PUPIL FREE DAY: 7.00 AM - 6.30 PM	
Tuesday 10 March, 2020	
FULL FEE (Before any applicable Child Care Subsidy)	\$65.00

If going ahead, the session will run all day from 7:00am to 6:30pm at the cost of \$65.00 (before any applicable Child Care Subsidy). Many families are eligible for Child Care Subsidy, which reduces the out of pocket cost of outside school hours care. To establish what level of CCS you may be entitled to please contact the Centrelink Family Assistance Office on 13 61 50.

Please book prior to 5.00 pm on Tuesday 3 March, 2020 to register your interest. We will advise on this day if we have enough bookings to proceed.

## HOW TO BOOK

Please log in to your account online at:

[www.oshclub.com.au](http://www.oshclub.com.au)

...and book in under the Pupil Free Day Room.

Please note that bookings can not be made online within 5 days of the session commencing. In order to book within this period, you will need to contact the Mitcham OSHClub service directly. The service's phone number is 0422 097 497, and can be found by visiting our website and searching for the service.

## WHAT HAPPENS?

We provide fun activities for all ages including arts and craft, games, sports, drama, board games, dress ups and fun with friends.

## WHAT TO BRING

Please bring morning tea, lunch and afternoon tea. Make sure your children wear/bring appropriate footwear and clothing, including a hat.

## FURTHER IMPORTANT INFORMATION

- Seven (7) days' notice is required for cancellation of the Pupil Free Day, to ensure you will not incur out of pocket costs.
- A \$4 late booking fee applies for bookings made within 5 days of the session commencing.
- All regular Before and After School Care bookings have been removed.

If you need assistance, please contact us on:



**Enrol Now:** [www.oshclub.com.au](http://www.oshclub.com.au)

**OSHClub Program Phone:** 0422 097 497

**OSHClub Head Office:** 1300 395 735

**Program Coordinator:** Jagruti

**Program Assistants:** Lekky, Jane, Maylee, Ashleigh & Maria





NOTICE - ALLERGY - Please ensure all food is nut free

EXCURSION

INCURSION

Monday 30 March

IN + \$23.00

**TEDDY BEARS PICNIC**

INCURSION - BUILD A BEAR WORKSHOP

Bring to life your very own Build A Bear in our FURbulous Build-A-Bear Workshop! Your new furry friend will be pre-filled with just the right amount of cuddliness, ready for you to add your own heart and personal touches.



Monday 06 April

IN + \$14.00

**THE CRAFTY FOX**

INCURSION - CRAFTPOWER: BUILD YOUR OWN BILLY GO CART

Get creative while learning to use wood work tools safely and build a 3D dragster push-pull car to keep



Tuesday 31 March

**A DAY IN PARIS**

IN-SERVICE

Bonjour! Today lets explore what Paris has to offer!



Tuesday 07 April

EX + \$35.00

**KALEIDOSCOPIC COLOUR**

EXCURSION - LATITUDE

Bounce, Climb and Fly as you challenge yourself on the trampolines, rock walls and ropes course at Latitude Heidelberg.



Wednesday 01 April

EX + \$35.00

**AUTUMN IN OUR BACKYARD**

EXCURSION - TASK WORKS

Work with your friends as you complete tasks and challenges in the fastest time!



Wednesday 08 April

IN + \$23.00

**REDUCE, REUSE & RECYCLE**

INCURSION - EXPLORING ENERGY

Today we explore different types of energy. Discuss where the energy in our bodies comes from, and where the energy used in our cars and houses come from. We investigate hands-on examples of energy transformation and create a giant circuit as a team!



Please arrive by 8.30am

Thursday 02 April

**GREEN MACHINE**

IN-SERVICE

It's a great day to go green today! Dress, eat and think green all day.



Thursday 09 April

**EASTER EGGSTRAVAGANZA**

IN-SERVICE

Celebrate the Easter Season with us today!



Friday 03 April

IN + \$18.00

**BUBBLE BOUNCE**

INCURSION - BUBBLE SOCCER

Have laugh out loud fun as you strap yourself in for some bubble soccer fun. You will be running/rolling around while being strapped into a Zorb Ball.



Friday 10 April

**PUBLIC HOLIDAY**

SERVICE CLOSED





Junior Adventures Group continues to pioneer the OSHC sector, building stronger communities and brighter futures for more than 70,000 children, 50,000 families and more than 450 schools across Australia.

#### Our Values

- Considerate - Be there for others
- Passionate - Bring energy and determination
- Courageous - Challenge ourselves

The values we share guide our behaviour as we work towards our vision to **build brighter futures together.**

Vacation Care

**OSHClub**

Before & After School Care



#### What we offer

- A healthy, safe, respectful and engaging environment
- Caring, enthusiastic, fun and friendly team
- New and popular excursions, incursions and theme days
- Stimulating experiences tailored to children's interests, abilities and current trends
- OSHClub endeavour to link each fun experience to key learning outcomes



#### We are a child safe organisation



#### What Does My Child Bring?

Please bring breakfast, morning tea, lunch, afternoon tea and a refillable drink bottle. If bringing food please make sure it's nutritious and doesn't require heating or cooking.

Please be mindful of the planned incursion/excursion and ensure your children are dressed appropriately. Don't forget your sun smart hat, comfortable clothes, closed shoes and a drink bottle.

To avoid loss or disappointment, please leave your valuables, money and electronic toys (including tablets and smartphones) at home.



#### Healthy Eating

OSHClub follows the Australian dietary guidelines which can be found at <https://www.eatforhealth.gov.au>

#### Activity Changes

If an excursion or incursion (due to unforeseen circumstances) is cancelled, the activity will either be postponed or an alternative activity of equal value will be provided where possible.



#### Before making your booking & cancellations

All children must be enrolled with OSHClub prior to booking via [oshclub.com.au](https://oshclub.com.au). Bookings made within 5 days for a Vacation Care session will incur an extra charge of \$4.00 per day per child. 7 days notice is required for cancellation of a Vacation Care booking to ensure you will not incur out of pocket costs. Please note that bookings cannot be made online within 5 days of the session commencing. In order to book within this period, you will need to contact the service directly, the Customer Service and Billing Team on 1300 395 735 or by emailing [oshaccounts@junioradventuresgroup.com.au](mailto:oshaccounts@junioradventuresgroup.com.au).

#### Child care subsidy

Our services are registered with Centrelink, so you will be able to claim Child Care Subsidy on your fees. For further information please visit <https://www.education.gov.au/new-child-care-package-frequently-asked-questions>.



#### Children with additional needs

We support all children including children with additional needs. If you would like to provide additional information about your child and his/her needs or require inclusion support funding, please contact us 6 weeks prior to program commencement on 0422 097 497 for staffing purposes.

FROM THE COMMUNITY

# DONVALE DIAMONDS + Kidz ZONE TENNIS 4 LADIES

Learn/Play TENNIS  
while your KIDZ  
have a BALL

....MONDAYS 9.15 @ DONVALE TENNIS CLUB....

0407 050 060

COACHING@PROTENNISACADEMY.COM.AU



VicHealth®

DONVALE  
Tennis Club



Mark Hartnett  
proTennisAcademy.





FROM THE COMMUNITY



# FREE HOCKEY PROGRAM

## AT MITCHAM PRIMARY

MARCH 3, 10, 17  
& 24TH  
3:30-4:30PM

ALL PARTICIPANTS RECEIVE FREE HOCKEY COACHING, A  
HOCKEY GALA DAY AND A FREE T SHIRT

ORGANISED BY BLACKBURN HIGH SCHOOL





## FINANCIAL ASSISTANCE INFORMATION FOR PARENTS

Every Victorian child should have access to the world of learning opportunities that exist beyond the classroom. The Camps, Sports and Excursions Fund helps ensure that no student will miss out on the opportunity to join their classmates for important, educational and fun activities. It is part of making Victoria the Education State and the Government's commitment to breaking the link between a student's background and their outcomes.

### CAMPS, SPORTS & EXCURSIONS FUND (CSEF)

School camps provide children with inspiring experiences in the great outdoors, excursions encourage a deeper understanding of how the world works and sports teach teamwork, discipline and leadership. All are part of a healthy curriculum.

CSEF is provided by the Victorian Government to assist eligible families to cover the costs of school trips, camps and sporting activities.

If you hold a valid means-tested concession card or are a temporary foster parent, you may be eligible for CSEF. A special consideration category also exists for asylum seeker and refugee families. The allowance is paid to the school to use towards expenses relating to camps, excursions or sporting activities for the benefit of your child.

The annual CSEF amount per student is:

- \$125 for primary school students
- \$225 for secondary school students

### MORE INFORMATION

For more information about the CSEF visit  
[www.education.vic.gov.au/csef](http://www.education.vic.gov.au/csef)

### HOW TO APPLY

New applicants should contact the school office to obtain a CSEF application form or download from [www.education.vic.gov.au/csef](http://www.education.vic.gov.au/csef)

If you applied for the CSEF at your child's school in 2019, you do not need to complete an application form in 2020 unless there has been a change in your family circumstances.

You only need to complete an application form if any of the following changes have occurred:

- **new student enrolments;** your child has started or changed schools in 2020 or you did not apply in 2019.
- **changed family circumstances;** such as a change of custody, change of name, concession card number, or new siblings commencing at the school in 2020.

Check with the school office if you are unsure.



## CAMPS, SPORTS AND EXCURSIONS FUND (CSEF) APPLICATION FORM

School Name

School REF ID

### Parent/legal guardian details

Surname \_\_\_\_\_

First name \_\_\_\_\_

Address \_\_\_\_\_

Town/suburb \_\_\_\_\_ State \_\_\_\_\_ Postcode \_\_\_\_\_

Contact number \_\_\_\_\_

Centrelink pensioner concession **OR** Health care card number (CRN)

-  -  -  **OR**

☐ Foster parent\* **OR** ☐ Veterans affairs pensioner

\*Foster Parents must provide a copy of the temporary care order letter from the Department of Health and Human Services (DHHS).

### Student details

Child's surname	Child's first name	Student ID	Date of birth (dd/mm/yyyy)	Year level

I authorise the Department of Education and Training (DET) to use Centrelink Confirmation eServices to perform an enquiry of my Centrelink customer details and concession card status in order to enable the business to determine if I qualify for a concession, rebate or service. I also authorise the Australian Government Department of Human Services (DHS) to provide the results of that enquiry to DET.

I understand that:

- DHS will use information I have provided to DET to confirm my eligibility for the Camps, Sports and Excursions Fund and will disclose to DET personal information including my name, address, payment and concession card type and status.
- this consent, once signed, remains valid while my child is enrolled at a registered Victorian school unless I withdraw it by contacting the school.
- I can obtain proof of my circumstances/details from DHS and provide it to DET so that my eligibility for the Camps, Sports and Excursions Fund can be determined.
- if I withdraw my consent or do not alternatively provide proof of my circumstances/details, I may not be eligible for the Camps, Sports and Excursions Fund provided by DET.
- information regarding my eligibility for the Camps, Sports and Excursions Fund may be disclosed to the Victorian Department of Health and Human Services and/or State Schools Relief for the purpose of evaluating concession card services or confirming eligibility for assistance.

You are able to request access to the personal information that we hold about you, and to request that any errors be corrected, by contacting your child's school.

Signature of applicant \_\_\_\_\_

Date \_\_\_\_ / \_\_\_\_ / \_\_\_\_

## CSEF ELIGIBILITY

Below is the criteria used to determine a student's eligibility for the Camps, Sports and Excursions Fund (CSEF).

### Criteria 1 – Eligibility

To be eligible\* for the fund, a parent or legal guardian of a student attending a registered Government or non-government Victorian primary or secondary school must:

- on the first day of Term one, or;
- on the first day of Term two;
  - a) Be an eligible beneficiary within the meaning of the *State Concessions Act 2004*, that is, be a holder of Veterans Affairs Gold Card or be an eligible Centrelink Health Care Card (HCC) or Pensioner Concession Card (PCC) holder, OR
  - b) Be a temporary foster parent, and;
  - c) Submit an application to the school by the due date.

\* A special consideration eligibility category also exists. For more information, see: [www.education.vic.gov.au/csef](http://www.education.vic.gov.au/csef)

Parents who receive a Carer Allowance on behalf of a child, or any other benefit or allowance not income tested by Centrelink, are not eligible for the CSEF unless they also comply with one of (a) or (b) above.

### Criteria 2 - Be of school age and attend school in Victoria

School is compulsory for all Victorian children aged between six and 17 years of age inclusive.

For the purposes of CSEF, students may be eligible for assistance if they attend a Victorian registered primary or secondary school. Typically, these students are aged between five and 18 years inclusive.

CSEF is not payable to students attending pre-school, kindergarten, home schooled, or TAFE.

### Eligibility Date

For concession card holders CSEF eligibility will be subject to the parent/legal guardian's concession card being successfully validated with Centrelink on the first day of either term one (29 January 2019) or term two (23 April 2019).

## PAYMENT AMOUNTS

### CSEF payment amount

The CSEF is an annual payment to the school to be used towards camps, sports and/or excursion expenses for the benefit of the eligible student.

- Primary school student rate: \$125 per year.
- Secondary school student rate: \$225 per year.

The CSEF is paid directly to your child's school and will be allocated by the school towards camps, sports and/or excursion costs for your child.

**For ungraded students**, the rate payable is determined by the student's date of birth. For more information, see: [www.education.vic.gov.au/csef](http://www.education.vic.gov.au/csef)

**Year 7 government school students** who are CSEF recipients are also eligible for a uniform voucher. Secondary schools are required to make applications on behalf of parents so please register your interest at the school.

## HOW TO COMPLETE THE APPLICATION FORM

### NOTE: ALL SECTIONS MUST BE COMPLETED BY PARENT/LEGAL GUARDIAN

1. Complete the PARENT/LEGAL GUARDIAN DETAILS section.  
Make sure that the Surname, First Name, and Customer Reference Number (CRN) details match those on your concession card. You will also need to provide your concession card to the school.  
If you are claiming as a Foster Parent or a Veteran Affairs Pensioner, you will need to provide a copy of documentation confirming your status as a temporary Foster Parent or provide your Veterans Affairs Pensioner Gold card to the school.
2. Complete the STUDENT/S DETAILS section for students at this school.
3. Sign and date the form and return it to the school office as soon as possible. The CSEF program for 2019 closes on 28 June, 2019.

CSEF payments cannot be claimed retrospectively for prior years.

**Queries relating to CSEF eligibility and payments should be directed to the school.**