



Mitcham
Primary School
thinkers | learners | leaders

MITCHAM PRIMARY SCHOOL NEWSLETTER

Mitchat

IMPORTANT DATES

- JUNE 3** BOOK FAIR OPEN
- JUNE 4** BOOK FAIR OPEN
- JUNE 5** BOOK FAIR OPEN
- JUNE 6** BOOK FAIR LAST DAY
- JUNE 7** MITCHKIDS
- JUNE 10** QUEEN'S BIRTHDAY
- JUNE 11** STUDENT FREE DAY
- JUNE 14** 5/6 WINTER SPORT
- JUNE 14** FUNDRAISING MEETING
- JUNE 21** 5/6 WINTER SPORT
- JUNE 21** MITCHKIDS
- JUNE 28** LAST DAY TERM 2
- JULY 15** FIRST DAY TERM 3
- JULY 19** RIDIC. RHYME SHOW
- JULY 22** DIVISION GIRLS FOOTY
- AUG. 2** 3/4 HOOPTIME

...SEE PAGE 5 FOR MORE

VALUE OF THE
MONTH

RESILIENCE



'YOU CAN DO IT TOO' SHOW

IN THIS ISSUE

- FROM THE PRINCIPAL'S DESK
- FROM THE ASSISTANT PRINCIPAL'S DESK
- FROM THE MITCHAM PRIMARY OFFICE
- NEWS AND UPDATES
- OSHCLUB NEWS
- ... AND MUCH MORE



FROM THE PRINCIPAL'S DESK

NATIONAL RECONCILIATION WEEK

This week is National Reconciliation Week, National Reconciliation Week is an annual celebration of respectful relationships shared by Aboriginal and Torres Strait Islander people and other Australians. It is a time for all Australians to learn about our shared histories, cultures and achievements. It has been wonderful visiting classrooms this week and joining in with the reading of Dreamtime stories and discussions about Australia's Aboriginal history and culture.



National Sorry Day, Sunday 26th May, gives people the chance to come together and share the steps towards healing for the Stolen Generations, their families and communities. The first National Sorry Day was held on May 26, 1998, which was one year after the tabling of a report about the removal of Aboriginal and Torres Strait Islander children from their families. The report, known as 'Bringing Them Home', acknowledged that Indigenous children were forcibly separated from their families and communities since the early days of European occupation in Australia.

This year I had the privilege of attending the official Flag Raising at the Whitehorse Civic Centre for National Sorry Day with our School and House Captains. We heard the Wurundjeri Elder, Uncle Dave, deliver a Welcome to Country and then the students participated in a smoking ceremony. We learned that only eucalyptus leaves are used in a smoking ceremony fire and different varieties are used by different 'mobs'. We learnt that walking through the smoke is like arriving at customs and getting your passport stamped. You are asking for admittance into that part of the country and are agreeing to abide by its laws. We also learnt about

the nutritional and environmental benefits of traditional foods.



CAREERS EXPO

Last week was Education Week and as you know the theme of 2019 was 'Careers' and about celebrating careers and pathways that will make student's dream jobs come true. We continued last week's Education Week celebrations into this week and in keeping with the theme 'Careers' on Wednesday we hosted a Careers Expo. Our 18 parent and friend volunteers certainly helped us in making this celebration real for our students, each volunteer was stationed in a classroom and spend time sharing with the students who rotated through the components of their careers. The Expo was an opportunity to highlight the many different careers and pathways available to our students and we are very grateful to all the parents and friends who gave up their time to make the Expo possible.

Make sure you have a look at the photos later in this newsletter.

Wishing all families a lovely weekend!

Erin Norman

Principal

FROM THE ASSISTANT PRINCIPAL'S DESK

MITCHKIDS

The next session will be on next Friday 7th June, from 10.00 to 11.00 in the Art room.

All Pre School children are welcome to attend.



SCHOOL PHOTOS

The school photos were held today. We hope to have delivery of the photos by the end of this term. If you have any queries regarding the photos, you will need to contact the photo company – MSP Photography.

DEAFNESS FOUNDATION

Our Junior School Council representatives were selling butterfly badges, pens, bag tags and key rings to support the deafness foundation. Many thanks to all who contributed to this worthy cause. I am pleased to announce that the school raised \$845, which is a wonderful effort.

BOOK FAIR

The have arrived on Wednesday and Miss Prim has been busy setting up the book fair. Yesterday, the grades starting coming to the Library to have their viewing time so they can write their 'wish list'. Books can be purchased from Monday 3rd June to Thursday 6th June. We hope that lots of you have a chance to come and look at the book fair while it is at school. If you are able to help over this time please contact Ms Primerano in the Library to add your name to the roster. You must have a current working with children check and have completed our parent-training course.



BEFORE SCHOOL READING

Before school reading will be held in Room 7 next week, while the Book Fair is in the library.

PUPIL FREE DAY REMINDER

Our next pupil free day is coming up soon Tuesday 11th June. Children are not to attend school on that day. If you will need to use OshClub for your child on this day, please ensure that you make a booking as soon as possible.

REMINDER

Just a reminder Monday 10th June is a public holiday and students are not to come to school.

Heather Wood

Assistant Principal

Mitcham Primary School ~ Book Fair ~

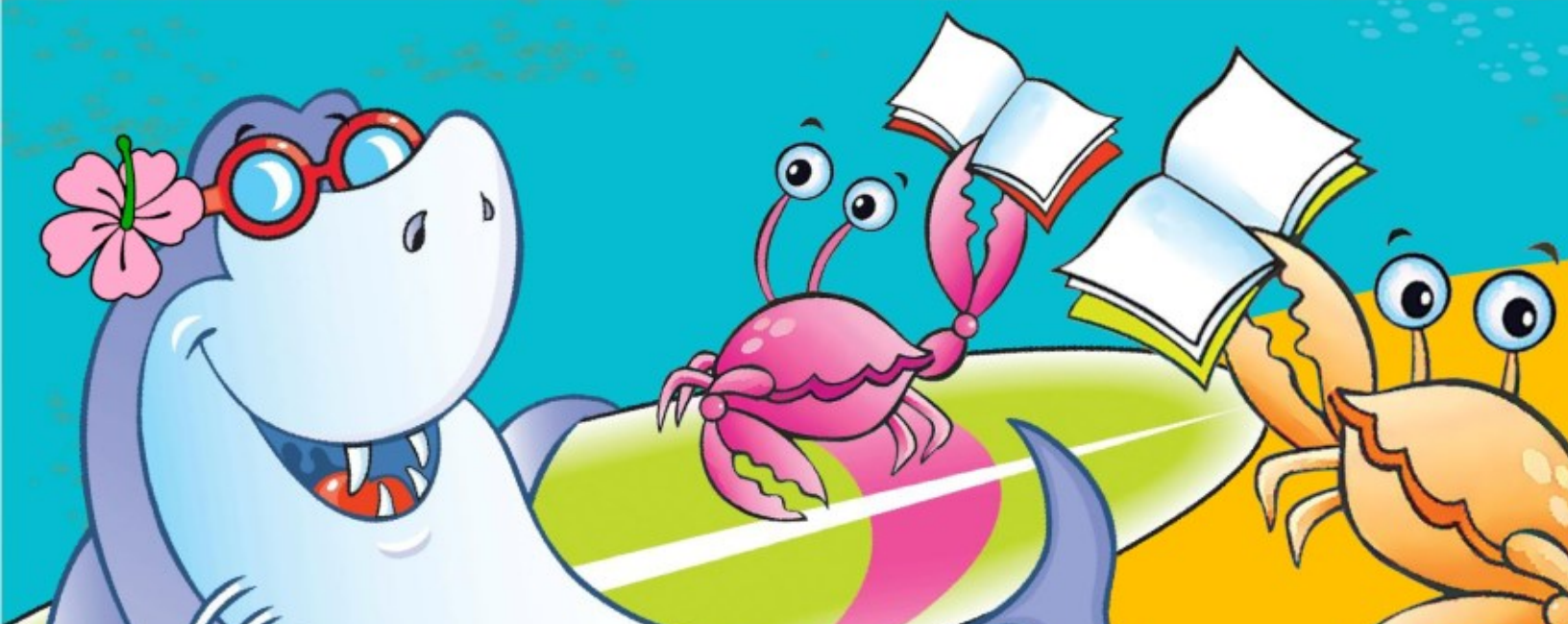
MONDAY 3 JUNE - THURSDAY 6 JUNE

Before School: 8.15 am - 8.45 am

After School: 3.15 pm - 3.45 pm

See you in the Library

GUESSING COMPETITION . RAFFLE . DESIGN A SURFBOARD



IMPORTANT DATES

DATE	EVENT
31 May	School Photos
3 June - 6 June	Book Fair Open for Sales
7 June	Mitchkids
10 June	Queen's Birthday Public Holiday
11 June	Student Free Day
14 June	Grade 5/6 Winter Sport Cycle 2 Stargazing Sleepover
18 June	Major Fundraiser Meeting: 6.30pm in the Library
21 June	Grade 5/6 Winter Sport Mitchkids
24 June	Grade 5/6 Winter Sport Backup Date
25 June	Woolworths Earn and Learn Ends
26 June	After School Chess Finishes for Term 2
28 June	Last Day Term 2
15 July	First Day Term 3
19 July	The Ridiculous Rhyme Show Visit
22 July	Division Girls Footy
2 August	3/4 Hooptime
7 August	Adam Wallace Author Visit
13 August	5/6 Multicultural Cup
14 August	5/6 Hooptime
17 - 23 August	Book Week
23 August	Grade 5/6 Summer Sport
26 August -	Grade 3/4 Camp 1

DATE	EVENT
28 August - 30 August	Grade 3/4 Camp 2
2 September	District Athletics
5 September	Grade 5/6 Performance
6 September	Grade 5/6 Summer Sport
13 September	Grade 5/6 Summer Sport Back up Date
20 September	Last Day Term 3
7 October	First Day Term 4
4 November	Student Free Day
6 November	Grade 3 - 6 Swimming Commences
15 November	Grade 3 - 6 Swimming Ends
18 November	Prep - 2 Swimming Commenced
29 November	Prep - 2 Swimming Ends
20 December	Last Day Term 4
29 January 2020	First Day Term 1, 2020
27 March 2020	Last Day Term 2, 2020
14 April, 2020	First Day Term 2, 2020
26 June, 2020	Last Day Term 2, 2020
13 July, 2020	First Day Term 3, 2020
18 September, 2020	Last Day Term 3, 2020
5 October, 2020	First Day Term 4, 2020
18 December, 2020	Last Day Term 4, 2020



HAPPY BIRTHDAY!



Dani - 1/2 A

Ethan - 1/3 B

Kli - 3/4 C

Erin - 3/4 B

Amelia - 3/4 A

CAREERS DAY SNEAK PEEK



MitchKids Playgroup



May

**Friday May 10
Friday May 24**

June

**Friday June 7
Friday June 21**

10.00 - 11.00am



July

Friday July 19



**Mitcham Primary School
294 Mitcham Road, Mitcham
Phone: 9873-1551**

August

**Friday Aug 2
Friday Aug 16
Friday Aug 30**

September

Friday Sept 13



FROM THE MITCHAM PRIMARY OFFICE

CSEF (CAMPS & SCHOOL EXCURSIONS FUND)

The Camps, Sports and Excursions Fund (CSEF) provides payments for eligible students to attend activities like:

- School camps or trips
- Swimming and school-organised sport programs
- Outdoor education programs
- Excursions and incursions.

Applications for 2019 are now open and will close on **28 June 2019** (end of Term 2). Families holding a valid means-tested concession card or temporary foster parents are eligible to apply.

Successful applicants will receive \$125 per year for eligible primary school students. Payments are made directly to the school and are tied to the individual student. Most payments start from March onwards.

Payments are for the application year and cannot be claimed for previous years.

The CSEF payment cannot be used towards voluntary school charges, books, stationery, school uniforms, before/after school care, music lessons, or formal/graduations.

You will only need to submit an application form in 2019 if any of the following changes have occurred:

- Your child has started or changed schools in 2019 or you did not apply at the same school in a previous year
- Changed family circumstances: such as a change of custody, change of name, concession card number, or new siblings commencing at the school in 2019.

We are able to accept and process applications up until the end of term two each year.

The payment system only allows one application per student. Parents in shared custody situations (who both hold a concession card) must make the decision beforehand who applies for the CSEF at the school on behalf of their children.

If you have already paid for some camp, sports or excursion costs up front, you have the option to:

- Allocate the payment towards remaining activities in 2019
- Carry over the amount to be used on eligible activities in 2020

Please note, CSEF funds cannot be directly refunded to families.

If you think you may be eligible, and are yet to apply, or would like more information, please see the information and application sheets enclosed in the later pages of this newsletter.

Alternatively, contact our school office for more information.

STATE SCHOOLS' RELIEF

Prep students who are applicable for the CSEF fund may also be able to receive support for school uniforms through State Schools' Relief.

State Schools' Relief helps with the cost of new school uniforms, shoes and books for families who are facing hardship.

The Victorian Government has provided more than \$15.65 million to State Schools' Relief to help provide 100,000 students with free or discounted new school uniforms, shoes and books over four years (2015-19).

For students commencing prep in 2019, State Schools' Relief can provide a winter warmer uniform package:

- 1 x rugby top or windcheater or polo long sleeve
- 1 x tracksuit pants
- 1 x pair of shoes (lace up or t-bar or runner/sneaker)

To apply, make sure you lodge your application for CSEF before the closing date and ensure you speak to the office about a uniform pack.

If your application is successful, uniform items and vouchers may be given directly to you, or the school. The school will contact you to pass on the items.

Please see the ladies in our office for more information or assistance.

This is



MITCHAM PRIMARY SCHOOL 2019
Grade 5/6 Performance

What'S There Not To Like?

By **MaRK & HeLEN JOhNSON**
And **StEWaRT HeNdeRSON**

NEWS AND UPDATES

MAJOR FUNDRAISER MEETING

We are in the process of planning for our 2019 Major Fundraiser!

We won't be able to achieve this without volunteers from our school community and therefore we invite anyone who would like to be involved in the major fundraiser this year, to come to a meeting on Tuesday 18th June at 6.30pm in the Library.

In this meeting, we will discuss the current plans for the major fundraiser, seek ideas and input from attendees and finalise planning for this event. This meeting does not require a concrete commitment from attendees, however we will be seeking to form an official committee following the meeting, as we won't be able to hold the event without a committee and volunteers.

ENTERTAINMENT BOOKS

Mitcham Primary School are fundraising!

Buy your new Entertainment Membership today!

The 2018 | 2019 Entertainment Memberships are about to expire so now is the perfect time to buy the new 2019 | 2020 Entertainment Membership! You can enjoy thousands of valuable offers for everything you love to do, all while supporting a great cause.

All you have to do is use your Membership twice to cover the cost of it. After that every use means extra dollars in your pocket!

[Click here](#) for a sneak peek at some of the amazing Entertainment Book deals.

[Click here](#) to order your book now.

UNIFORM SHOP CLOSED: FRIDAY 21 JUNE

Due to stocktake, our uniform supplier shop, RHSports will be closed on Friday 21st June. Unfortunately, this means no orders will be shipped, no orders via the web will be downloaded and packed, and the shop will be closed for walk-in parents. The shop will be re-opened on Monday 24th June.

SUSTAINABILITY WEEK

Next week is Sustainability Week! Students across all year levels will have the opportunity to enjoy a variety of activities to help us learn about some of the many ways we can work towards creating a cleaner, happier, healthier world to live in, and a more sustainable future.

As an introduction to Sustainability Week, we will also be introducing our latest fundraiser, organised by the Fundraising Committee in conjunction with the Sustainability Monitors, 'Bee Wrappy'.

Bee Wrappy are beeswax food wraps, used to cover a variety of foods and bowls in the same way you would use plastic cling wrap. The beauty of beeswax wraps is that they are washable, reusable and compostable.

Mitcham Primary School will be selling packs of Bee Wrappy wraps for a cost of \$25.00 per pack.

Students will be receiving order forms next week.

BOOK FAIR: HELPERS NEEDED

Our Book Fair will be kicking off next week, and will be open for sales before school (8.15am – 8.45pm) and after school (3.15pm – 3.45pm) from Monday 3 June until Thursday 6 June. Cash and EFTPOS facilities are available.

We are still in need of a Parent Helper or two to assist with sales during our Thursday afternoon session and Tuesday morning session.

If you have completed the Parent Helper training with Kathy Lawson this year, hold a current Working with Children Check, and are happy and willing to help with sales at the Fair on these dates, simply contact or visit our school Library to add your name to the roster.

Any assistance at all will be greatly appreciated.

Fundraising

with **BEE WRAPPY®**
Beeswax Food Wraps

\$25 for 3 pack

A reusable, washable and beautiful
alternative to single use plastic

3 PACK

- 1 small
- 1 medium
- 1 large

What are beeswax wraps?

Bee Wrappy Beeswax Food Wraps are used to cover food, vegetables, fruits and bowls in the same way you would use cling film. They are washable, reusable and compostable.

How do Bee Wrappys work?

With the warmth of your hands, the wraps become malleable. This allows you to mould them around food and bowls, where the wrap will stick to itself, creating a breathable yet protective cover. You can also fold Bee Wrappys into snack-pouches or little envelopes which are perfect for out and about.

What can I use my beeswax wraps for?

You can use your Bee Wrappys to cover almost any food or bowl in the kitchen.



Wrap:

- half an avocado or lemon
- almost any vegetable (like pumpkin, celery, cauliflower and zucchini)
- cut fruit
- sandwiches for your lunch or picnics

What are Bee Wrappys made out of?

Our wraps are made with all-natural ingredients and no nasties. GOTS certified organic cotton, organic Australian beeswax, dammar resin, Australian jojoba oil and virgin coconut oil. That's it. So, you can dispose of your wrap in the compost or green bin knowing that it's 100% bio-degradable.

How do I wash and take care of them?

It's super simple!

Wash your wraps with cold soapy water, and drip dry them in your dish rack. Please keep them away from all heat sources or hot water as they will begin to melt. After they dry you can store them anywhere (we store ours with the tea towels).

Cover:

- large salad bowls for a BBQ
- cool casserole or lasagna dishes
- leftovers



NEWS AND UPDATES

ART ROOM DONATIONS

The art room welcomes your donations. Most supplies on the list are recyclable materials commonly found around the home. If you have other unique items that are not on the list but think they could be used in art, do not hesitate to contact Miss McFarland. We appreciate any donations to use in class throughout the year. We are very creative artists and can find a use for most things!

- Magazines and newspapers
- Paper towel rolls
- Plastic cups or tubs
- Foil trays
- Clean tomato sauce bottles
- Cling wrap and aluminium foil
- Small cardboard boxes e.g. coffee pod/sachet boxes
- Milo/coffee Tins
- Bottle tops

WOOLWORTHS EARN & LEARN

This year we will be participating in the Woolworths Earn & Learn program. Through this program we will be able to get new educational resources for our school – and all we need you to do is to shop for your groceries at Woolworths.

From 1st May until 25 June, we are collecting Woolworths Earn & Learn Stickers. You will get one Woolworths Earn & Learn Sticker for every \$10 spent (excluding liquor, tobacco and gift cards). Place the Woolworths Earn & Learn Sticker onto a Woolworths Earn & Learn Sticker Sheet (coming home with your child today) and when it's complete, the Sticker Sheet can be dropped into the Collection Box here at the school or at the Woolworths in Eastland. Additional Sticker Sheets are available from the School Office.

At the end of the promotion, we'll be able to get some great new equipment. The range is extensive and offers lots of items ideal for our students – including resources for Maths, English, Science and some fantastic fun supplies for Arts & Craft, Sport

and for our library. If you'd like to know more visit woolworths.com.au/earnandlearn

LUNCH ORDER PROVIDER

Lunch orders are available on Monday, Wednesday and Friday. Simply [click here](#), or search the following address in your browser: www.classroomcuisine.com.au

You will need to register an account in your name and select Mitcham Primary School. Once you are in your account there is a tab to add a child. Please add your children and select Mitcham Primary School and their grade.

Placing orders can be done up until 8.30 the morning of the lunch day.

The option to select future dates is available to place orders, if your child is not attending school on the future day you can cancel the order the morning of the absence.

Payment is required at the time of ordering with a credit card.

See our lunch order menu in the following pages.

SCHOOL BANKING

Does your child want to be part of School Banking?

The school banking program is a great way to start creating good financial habits. There are also great reward items to redeem after each 10 deposits, as it is an incentive for banking regularly and not a monetary exercise.

If you're interested in your child taking part in School Banking, visit your local Commonwealth Bank branch and ask to open up a School Banking or 'Dollarmites' account for your child.

School banking takes place every Wednesday.



Fundraising

with

BEE WRAPPY®

Beeswax Food Wraps



BEESWAX FOOD WRAPS

3 PACK \$25

Made with GOTS certified organic cotton, Australian organic beeswax, dammar resin, jojoba oil and organic virgin coconut oil.

They are breathable, washable, re-useable and compostable.

They love your food longer and we love them for it.

beewrappy.com.au

EXTRA CURRICULAR ACTIVITIES 2019

CLUB/ACTIVITY	COST (Y/N)	DAY OF WEEK	WHEN	STUDENTS INVOLVED	ORGANISER
Before School Reading	N	Tuesday	Before school	All Welcome	Heather Wood
Bonsai Club	Y	TBC*	During school	Grade 5/6s	Marina Rich
Chess Club	Y	Wednesday	After school	All Welcome	Heather Wood
Five Six Mix Choir	N	Thursday	During lunch	Grade 5/6s	Natalie Wickham
Gardening & Sustainability Club	N	Monday	During lunch	All Welcome	Marina Rich, Laura Luscombe & Kate Medcalf
Hot Shots Tennis	Y	Multiple	During & After School.	All Welcome	Contact Office
Instrumental Music	Y	Various	During school	All Welcome	Contact Office
Junior School Council	N	Various	During school	Elected students	Jayne Koth, Tracey Irvine & Kate Medcalf
Kelly Sports	Y	Multiple	During lunch	All Welcome	Contact Office
Lunchtime Library Sessions	N	Wednesday & Friday	During lunch	All Welcome	Erin Norman
Media	N	Thursday	During school	Media Team	Tracey Irvine & Emma Bates
Mitcham Melodies Choir	N	Thursday	During lunch	Grade 3/4	Jess Yuen, Emma Bates & Deb Williamson
Mitcham Music Makers	N	TBC	During lunch	Grades 4-6	Natalie Wickham
New Zealand Exchange	Y	N/A	N/A	Grade 5/6s	Heather Wood
Peer Mediation	N	Various	During recess	Grade 6s	Tracey Irvine, Laura Luscombe & Marianne McKay
Perceptual Motor Program	N	Monday	During school	Preps	Val Berardini
Quiet Space	N	Tuesday, Wednesday & Thursday	During lunch	All Welcome	Michelle Dybing
Robotics Club	N	Friday	During lunch	TBC	Netanel Koles
Running Club	N	Friday	Before school	Grades 3-6	Laura Ellis & Tracey Irvine
Street Dance Studios	Y	Tuesday	During lunch	Grades 4 - 6	SDS Staff
Snack and Study	N	Thursday	After school	EAL Students	Michelle Dybing
Tournament of Minds	N	TBC	TBC	Grade 5/6s	TBC
Grade 5/6 Games	N	Friday	During Lunch	Grade 5/6	Paul Bremner (Volunteer)

MSP Photography is excited to be photographing Mitcham PS on Friday 31st May 2019



As school photo day is fast approaching, school photo order envelopes have been handed out to every student! It is important to follow the order instructions on your personalised envelopes.

We offer a variety of pack choices starting from just \$20. Jump online at **www.msp.com.au** to view these packages, alternatively they are all pictured & listed on your personalised photo order envelope.
Please follow the below steps for a smooth ordering process and photo day experience.

Ordering:

Payment Options include Cash or Online

TO ORDER WITH CASH

- On your envelope please select which package you would like to purchase & enclose CORRECT MONEY in your child's envelope
- Please include correct money as there is NO CHANGE AVAILABLE on or after photo day

TO ORDER ONLINE

- Using your child's SHOOTKEY logon to www.msp.com.au and click ORDER ONLINE. Following the on screen prompts you may select your chosen package and make payment
- You will receive an email once the order is complete. Please record your child's Reference Number on their envelope
- The online ordering system closes at midnight of photo day

Sibling Photos:

FAMILY PHOTO SLIPS ARE ATTACHED TO YOUR ELDEST CHILD'S PHOTO ENVELOPE

- Please leave the slip attached to your envelope and follow listed instructions
 - Pay online using the family SHOOTKEY
 - Spare Family Slips are available at the school office if you did not receive one
- **PLEASE NOTE FAMILY ORDERS MUST BE MADE ONLINE & MUST BE MADE BEFORE 11.59PM THE NIGHT BEFORE PHOTO DAY.****

All students will need to hand their envelope to the photographer on photo day regardless of payment method as all students have their photo taken on the day whether or not an order has been placed. Please do not seal envelopes inside of each other. If you have any further queries or questions please contact us.



MSP Photography | North East Melbourne

P 9466 7331 | E admin.nem@msp.com.au | 7/9 Mirra Court, Bundoora VIC 3083
www.msp.com.au

Dear Mitcham OSHClub Parents,

Hello everyone! This week the children have been enjoying handling and looking after our awesome new stick insects. Grade 3 and 4 girls have been very responsible in getting the input of parents in the process of developing our service specific philosophy.

OSHClub will be running on the Pupil Free Day at Mitcham Primary School on Tuesday 11th June 2019. If you need your child to attend please book in to avoid late booking fee.

Bookings are now open for the Winter School Holidays at MITCHAM OSHCLUB. Please find attached the brochure outlining all the exciting activities, incursions and excursions on offer each day.

We are working on providing varied play areas based on children's interests, please feel free to pop in and provide suggestions or feedback. We will be soon saying good bye to our tennis table and some of our old cupboards, if you're interested, please come in and have a look.

We are in the process of developing a program specific philosophy. If anyone is interested, please ask for a questionnaire sheet. Any input will be highly appreciated.

UPDATE IN THE BOOKING POLICY FOR BSC AND ASC SESSIONS

- Parents will not be able to book online within 24 hours as the system is locked 24 hours before the session commence time.
- Parents can book their child(ren) into the program on the day by calling or texting 0422 097 497.
- Program times are from 7am—9am and 2:30pm—6:30pm, bookings will be confirmed during these times.
- A late booking fee of \$4 will automatically be charged when a booking is made at short notice (0-24 hrs ahead of the start time of the session). This fee was waived last term for goodwill as the CCS was stabilising – it is part of our usual T&C's.
- When a child is booked but does not attend, and

there's been no notification that they will be absent, a \$5 'no-show' fee will be incurred.

- Our cancellation policy is now 48 hours before the session commences. Cancellations within 48 hours will incur full fee.

UPDATING CONTACT DETAILS

Please remember to update your family's contact details, especially phone numbers, addresses, and any medical conditions on the enrolment form if there is any change. This can be done online at:

www.oshclub.com.au

WEEK 7 : BEFORE SCHOOL CARE	
DAY	ACTIVITY
MONDAY	Deep sea creatures and environment & Adventure Walk
TUESDAY	Australian Animals Cards & Ball Skills
WEDNESDAY	Autumn Crushed Leaves & Soccer
THURSDAY	From Frog to Tadpole & Bug Hunting
FRIDAY	Garden Painting & AFL Football
WEEK 7 : AFTER SCHOOL CARE	
DAY	ACTIVITY
MONDAY	Recycled Cardboard Roll Tower & Running Race
TUESDAY	How do plants grow? & Build a Volcano
WEDNESDAY	Patterns from Nature & Collect the Cones
THURSDAY	Nature Play Dough Creative Play & Dead Ants Tag Game
FRIDAY	'How can We Save the Environment?' Poster & Bird Spotting

Enrol Now: www.oshclub.com.au

OSHClub Program Phone: 0422 097 497

OSHClub Head Office: 1300 395 735

Program Coordinator: Jagruti

Program Assistants: Lekky and Jess (permanent),

OSHCLUB NEWS: PUPIL FREE DAY

UPCOMING PUPIL FREE DAY

We have been informed of an upcoming Pupil Free Day at Mitcham Primary School on Tuesday 11th June 2019. Mitcham OshClub will run if we receive a minimum of 15 bookings for the day.

If going ahead, the session will run all day from 7:00am to 6:30pm at the cost of \$65.00 (before any applicable Child Care Subsidy).

Many families are eligible for Child Care Subsidy, which reduces the out of pocket cost of outside school hours care. To establish what level of CCS you may be entitled to please contact the Centrelink Family Assistance Office on 13 61 50.

Please book prior to 5.00pm on Tuesday 4th June 2019 to register your interest. We will advise on this day if we have enough bookings to proceed.

PUPIL FREE DAY: 7.00 AM - 6.30 PM

Tuesday 11 June 2019

FULL FEE

\$65.00

FURTHER INFORMATION

- 7 days notice is required for cancellation of the Pupil Free Day, to ensure you will not incur out of pocket costs.
- A \$4 late booking fee applies for bookings made within 5 days of the session commencing.
- All regular Before and After School Care bookings have been removed.



HOW TO BOOK

Please log in to your account online at www.oshclub.com.au and book in under the Pupil Free Day Room.

WHAT HAPPENS

We provide fun activities for all ages including arts and craft, games, sports, drama, board games, dress ups and fun with friends.

WHAT TO BRING

Please bring morning tea, lunch and afternoon tea. Make sure your children wear/bring appropriate footwear and clothing, including a hat.

SESSION CONFIRMATION OR CANCELTION NOTIFICATION

Parents will be notified by the end of business on the Tuesday 4 June, 2019 if the day will proceed.



NOTICE - ALLERGY - Please ensure all food is nut free

EXCURSION

INCURSION

Monday 01 July

THE MAGIC OF WINTER

IN-SERVICE

Rug up and get cosy as we spend a wonderful winter day together!



Monday 08 July

KALEIDOSCOPE COLOUR

IN-SERVICE

Come dressed in your favourite colour today as we explore all the colours of the rainbow!



Tuesday 02 July

IN + \$17.00

SURVIVAL OF THE FITTEST

INCURSION - THREATENED & ENDANGERED SPECIES: LIFE ON THE BRINK OF EXTINCTION

Meet some of Australia's rarest threatened & endangered species, as they visit our service today. It's sure to be an eye-opening experience!



Tuesday 09 July

IN + \$17.00

ROCKET TO THE MOON

INCURSION - SPACE ODYSSEY VIA VIRTUAL REALITY

Virtual Reality transports you to places you cannot easily visit. Every child becomes an astronaut, piloting their research vessel around planets and moons, learning about the solar system.



Wednesday 03 July

PURPLE PARTY PEOPLE

IN-SERVICE

Come dressed head to toe in purple today and join in the Best Dressed Parade.



Wednesday 10 July

EX + \$30.00

IT'S A RECORD BREAKING DAY

EXCURSION - INFLATABLE WORLD RINGWOOD

Bounce and climb high and low at Inflatable World today! Don't forget your socks.



Arrive by 8.30am, Don't forget your socks!

Thursday 04 July

EX + \$30.00

MISSION IMPOSSIBLE

EXCURSION - ZONE BOWLING AND LASER TAG FOREST HILL

Challenge your friends as we head to Zone Bowling Forest Hill for a game of ten pin bowling and laser tag. Please ensure you are wearing socks and enclosed shoes.



Please arrive by 8:30am

Friday 05 July

IN + \$17.00

MYSTICAL MAGIC

INCURSION - PABLO AND PINKO NO CHARGE MAGIC SHOW AND WORKSHOP

Be Mesmerized by the Pablo and Pinko magic show then followed by a hands on workshop.



Thursday 11 July

FANTASTIC FRIENDS

IN-SERVICE

'Good friends are like stars, you don't always see them but they're always there'



Friday 12 July

IN + \$17.00

CELEBRATING NAIDOC WEEK

INCURSION - INDIGENOUS STORYTELLING THROUGH ART

Learn about and create Australian Indigenous art in a fun and unique way through story telling.



Junior Adventures Group continues to pioneer the OSHC sector, building stronger communities and brighter futures for more than 70,000 children, 40,000 families and more than 400 schools across Australia.

Our Values

- Considerate - Be there for others
- Passionate - Bring energy and determination
- Courageous - Challenge ourselves

The values we share guide our behaviour as we work towards our vision to **build brighter futures together.**

Vacation Care

OSHClub
Before & After School Care



What we offer

- A healthy, safe, respectful and engaging environment
- Caring, enthusiastic, fun and friendly team
- New and popular excursions, incursions and theme days
- Stimulating experiences tailored to children's interests, abilities and current trends
- OSHClub endeavour to link each fun experience to key learning outcomes



We are a child safe organisation



What Does My Child Bring?

Please bring breakfast, morning tea, lunch, afternoon tea and a refillable drink bottle. If bringing food please make sure it's nutritious and doesn't require heating or cooking.

Please be mindful of the planned incursion/excursion and ensure your children are dressed appropriately. Don't forget your sun smart hat, comfortable clothes, closed shoes and a drink bottle.

To avoid loss or disappointment, please leave your valuables, money and electronic toys (including tablets and smartphones) at home.



Healthy Eating

OSHClub follows the Australian dietary guidelines which can be found at <https://www.eatforhealth.gov.au>

Activity Changes

If an excursion or incursion (due to unforeseen circumstances) is cancelled, the activity will either be postponed or an alternative activity of equal value will be provided where possible.



Before making your booking & cancellations

All children must be enrolled with OSHClub prior to booking via oshclub.com.au. Bookings made within 5 days for a Vacation Care session will incur an extra charge of \$4.00 per day per child. 7 days notice is required for cancellation of a Vacation Care booking to ensure you will not incur out of pocket costs. Please note that bookings cannot be made online within 5 days of the session commencing. In order to book within this period, you will need to contact the service directly, the Customer Service and Billing Team on 1300 395 735 or by emailing oshaccounts@junioradventuresgroup.com.au.

Child care subsidy

Our services are registered with Centrelink, so you will be able to claim Child Care Subsidy on your fees. For further information please visit <https://www.education.gov.au/new-child-care-package-frequently-asked-questions>.



Children with additional needs

We support all children including children with additional needs. If you would like to provide additional information about your child and his/her needs or require inclusion support funding, please contact us 6 weeks prior to program commencement on 0422 097 497 for staffing purposes.



CONFIDENCE

TRY US OUT!

Call us on **0499 777 146** and
mention the code: **MITCHAMPSTERM2**
to get a **FREE 2 Week Trial Period!**

The Little Gym offers a wide variety of classes that help children reach their greatest potential. Structured lessons, unique themes and a nurturing environment build confidence during each stage of childhood.

From 4 months to 12 years, we're your source for endless growth. Classes include:

Parent/Child Classes (4 months - 3 years)

Preschool Gymnastics (3 - 6 years)

Primary School Gymnastics (6 - 12 years)

THE LITTLE GYM MITCHAM
Unit 1/ 602 Whitehorse Road Mitcham VIC 3132
0499 777 146 / 0499444856
www.mitcham.thelittlegym.com.au
www.facebook.com/thelittlegymmitcham
mitcham@thelittlegym.com.au

**THE Little
gym®**
Serious Fun.



KIDS DISCO



\$10

per person (pay at the door)

SATURDAY 1 JUNE, 2019

6.30 - 8 PM

**Street Dance Studios
25 Enterprise Way Mitcham**

For Age 5+

**Dancing, Games and lots of fun
Bring your friends!**

All proceeds go to fundraising for our SDS Mega-Crew Disney Tour

bringing up great kids

Would you like to understand why your **child** behaves the way they do?

Are you interested in knowing more about why you **parent** the way you do?

Would you like to explore how to enhance your parenting and relationship with your child?

Bringing up Great Kids (BUGK) is a program that uses mindfulness and reflection to support parents / carers of children as they review and enhance their patterns of communication with their children.

The BUGK Program supports parents as they explore what influences their parenting practices, and the messages they're passing on to their children.

The program aims to work with parents as they establish a new relationship context with their children.

For more information or to register, please contact Sandra Fawcett on 9871 1802

Who Parents / Carers of children aged 0-10 years

Where Mitcham Family Centre
15 Brunswick Road
Mitcham

When Thursdays
6th June – 27th June 2019
(4 consecutive weeks)

Time 9.30am – 12pm

Cost Free
(tea/coffee/snacks provided)

*Sorry no child minding available

This program is funded by the City of Whitehorse

Anyone can earn stickers to help local schools



The Woolworths Earn & Learn program gives schools and Early Learning Centres around Australia the chance to earn amazing school equipment. In 2017 we had over 15,000 schools and Early Learning Centres involved, and delivered over 300,000 new pieces of equipment to kids all over Australia.

Here's what to do:



Between 1 May and 25 June 2019, collect as many stickers as you can.

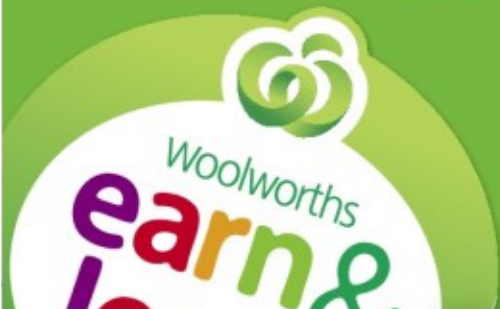


Stick them on the sticker sheets and give them to your local school or Early Learning Centre. Or drop them into a collection box in store.

Don't forget, you can always download and print extra sticker sheets at woolworths.com.au/earnandlearn

Need more information?

To read our Frequently Asked Questions and Terms & Conditions visit woolworths.com.au/earnandlearn



My Woolworths Earn & Learn stickers



Stick your Woolworths Earn & Learn stickers in the squares below.
Give them to your local school or Early Learning Centre, or drop them
into a collection box in store by 25 June 2019.

My name: _____

Collecting for: _____

Entry to the promotion is open to primary and secondary schools, and eligible Early Learning Centres (ELC) in Australia. Promotion runs 1 May 2019 until 25 June 2019. Speak to your school or ELC to ensure they are registered, or visit woolworths.com.au/earnandlearn and check online. Participants must be registered by 25 June 2019. One Woolworths Earn & Learn sticker is given for every \$10 spent in a single transaction at Woolworths Supermarkets, Woolworths Metro and online, excluding liquor, tobacco, gift cards and other specified purchases. While stocks last. Stickers must be counted and submitted by 7 July 2019. Stickers must be redeemed for equipment by 21 July 2019. Retain stickers for validation. For full terms and conditions, please visit woolworths.com.au/earnandlearn

Commencing a Trial with MITCHAM PRIMARY in T1, 2019!

A Two Course Lunch is \$8.95 and a Three Course Lunch is \$10.35

AVAILABLE – MONDAY'S, WEDNESDAY'S & FRIDAY'S!

LUNCH ITEM ONE

SALADS

- Greek Style Salad with Feta and Olives (GF)
- Brown Rice & Mixed Bean Salad (GF)
- Thai Style Noodle Salad (GF)
- Quinoa, Tabouli & Tuna Salad (GF)
- Pasta Salad (GF)
- Pic(k)nic Box – Vegetarian (GF)
- Pic(k)nic Box with Ham (GF)

SUSHI

- Sushi - Teriyaki Chicken Hand Rolls (2)
- Sushi - Cooked Tuna Hand Rolls (2)
- Sushi - Avocado Hand Rolls (2)
- Sushi - Cucumber Hand Rolls (2)
- Sushi – Vegetarian Hand Rolls (2)

BAKERY

- Cheese and Bacon Roll
- Cheese and Vegemite Scroll
- Supreme Pizza Roll
- Topped with Only Cheese Roll

PITA PIZZAS

- Margherita Pita Pizza
- Ham and Pineapple Pita Pizza
- Fresh Tomato and Italian Herb Pita Pizza
- Spinach & Feta Pita Pizza

SANDWICHES, ROLLS & WRAPS

- Ham, Cheese and Tomato Sandwich
- Turkey, Cranberry, Lettuce and Cheese Sandwich
- Ham and Cheese Roll
- Gluten Free Ham & Cheese Sandwich (GF)
- Simple Salad Roll
- Gluten Free Ham & Cucumber Sandwich (GF)
- Vegemite Sandwich
- Mild Salami and Salad Roll
- Beetroot and Salad Roll
- Roast Beef, Fruit Chutney, Cheese and Lettuce Roll
- Cheese and Salad Roll
- Wholegrain Cheese and Tomato Sandwich
- WRAP (GF) Ham and Salad
- Chicken and Salad Roll
- Wholegrain ROLL Tuna and Salad
- Salad with Ham (No Cheese) ROLL

LUNCH ITEM TWO/THREE

FRESH FRUIT & VEG

- Fresh Fruit Combo
- Freshly chopped Orange Segments
- Freshly chopped Strawberries with Green Grapes
- Apple with Lemon Juice, Brown Sugar & Cinnamon
- Freshly chopped Cantaloupe & Watermelon
- Freshly Chopped Watermelon pieces
- Chopped Carrot, Cucumber, Red & Yellow Capsicum
- Freshly chopped Pineapple with Orange Pieces
- Lightly Steamed Corn Wheels & Broccoli
- Sugar Snap Peas, Beans & Cherry Tomatoes
- Cherry Tomatoes with Tasty Cheese & Rice Crackers

BAKED GOODS

- Choc Chip Cookie
- Fruit Bun
- Hedgehog Slice
- Finger Bun with Sprinkles
- Banana Cup Cake (GF, DF)
- Iced Cup Cake
- Choc Cup Cake (GF,DF)
- Blueberry Muffin
- Apple & Cinnamon Cake

YOGHURT

- Chobani Yoghurt - Strawberry
- Chobani Yoghurt - Blueberry
- Chobani Yoghurt - Passionfruit
- Chobani Yoghurt – Plain
- Chia, Banana, Coconut and Strawberry Bowl

DIPS & CRACKERS

- Tzatziki dip with Rice Crackers
- Avocado dip with Rice Crackers
- Spring Onion dip with Rice Crackers
- Moroccan Carrot dip with Rice Crackers

POPCORN/SNACKS

- Cobs Popcorn, Lightly Salted
- Cobs Popcorn Slightly Sweet, Lightly Salted
- Lightly salted Fav'va Beans

DRINKS

- Apple Juice
- Orange Juice
- Nippy's Chocolate Milk

FINANCIAL ASSISTANCE INFORMATION FOR PARENTS

Every Victorian child should have access to the world of learning opportunities that exist beyond the classroom. The Camps, Sports and Excursions Fund helps ensure that no student will miss out on the opportunity to join their classmates for important, educational and fun activities. It is part of making Victoria the Education State and the Government's commitment to breaking the link between a student's background and their outcomes.

CAMPS, SPORTS & EXCURSIONS FUND (CSEF)

School camps provide children with inspiring experiences in the great outdoors, excursions encourage a deeper understanding of how the world works and sports teach teamwork, discipline and leadership. All are part of a healthy curriculum.

CSEF is provided by the Victorian Government to assist eligible families to cover the costs of school trips, camps and sporting activities.

If you hold a valid means-tested concession card or are a temporary foster parent, you may be eligible for CSEF. A special consideration category also exists for asylum seeker and refugee families. The allowance is paid to the school to use towards expenses relating to camps, excursions or sporting activities for the benefit of your child.

The annual CSEF amount per student is:

- \$125 for primary school students
- \$225 for secondary school students

MORE INFORMATION

For more information about the CSEF visit www.education.vic.gov.au/csef

HOW TO APPLY

New applicants should contact the school office to obtain a CSEF application form or download from www.education.vic.gov.au/csef

If you applied for the CSEF at your child's school in 2018, you do not need to complete an application form in 2019 unless there has been a change in your family circumstances.

You only need to complete an application form if any of the following changes have occurred:

- **new student enrolments;** your child has started or changed schools in 2019 or you did not apply in 2018.
- **changed family circumstances;** such as a change of custody, change of name, concession card number, or new siblings commencing at the school in 2019.

Check with the school office if you are unsure.



CAMPS, SPORTS AND EXCURSIONS FUND (CSEF) APPLICATION FORM

School Name

School REF ID

Parent/legal guardian details

Surname _____

First name _____

Address _____

Town/suburb _____ State _____ Postcode _____

Contact number _____

Centrelink pensioner concession **OR** Health care card number (CRN)

- - - **OR**

☐ Foster parent* **OR** ☐ Veterans affairs pensioner

*Foster Parents must provide a copy of the temporary care order letter from the Department of Health and Human Services (DHHS).

Student details

Child's surname	Child's first name	Student ID	Date of birth (dd/mm/yyyy)	Year level

I authorise the Department of Education and Training (DET) to use Centrelink Confirmation eServices to perform an enquiry of my Centrelink customer details and concession card status in order to enable the business to determine if I qualify for a concession, rebate or service. I also authorise the Australian Government Department of Human Services (DHS) to provide the results of that enquiry to DET.

I understand that:

- DHS will use information I have provided to DET to confirm my eligibility for the Camps, Sports and Excursions Fund and will disclose to DET personal information including my name, address, payment and concession card type and status.
- this consent, once signed, remains valid while my child is enrolled at a registered Victorian school unless I withdraw it by contacting the school.
- I can obtain proof of my circumstances/details from DHS and provide it to DET so that my eligibility for the Camps, Sports and Excursions Fund can be determined.
- if I withdraw my consent or do not alternatively provide proof of my circumstances/details, I may not be eligible for the Camps, Sports and Excursions Fund provided by DET.
- information regarding my eligibility for the Camps, Sports and Excursions Fund may be disclosed to the Victorian Department of Health and Human Services and/or State Schools Relief for the purpose of evaluating concession card services or confirming eligibility for assistance.

You are able to request access to the personal information that we hold about you, and to request that any errors be corrected, by contacting your child's school.

Signature of applicant _____

Date ____ / ____ / ____

CSEF ELIGIBILITY

Below is the criteria used to determine a student's eligibility for the Camps, Sports and Excursions Fund (CSEF).

Criteria 1 – Eligibility

To be eligible* for the fund, a parent or legal guardian of a student attending a registered Government or non-government Victorian primary or secondary school must:

- on the first day of Term one, or;
- on the first day of Term two;
 - a) Be an eligible beneficiary within the meaning of the *State Concessions Act 2004*, that is, be a holder of Veterans Affairs Gold Card or be an eligible Centrelink Health Care Card (HCC) or Pensioner Concession Card (PCC) holder, OR
 - b) Be a temporary foster parent, and;
 - c) Submit an application to the school by the due date.

* A special consideration eligibility category also exists. For more information, see: www.education.vic.gov.au/csef

Parents who receive a Carer Allowance on behalf of a child, or any other benefit or allowance not income tested by Centrelink, are not eligible for the CSEF unless they also comply with one of (a) or (b) above.

Criteria 2 - Be of school age and attend school in Victoria

School is compulsory for all Victorian children aged between six and 17 years of age inclusive.

For the purposes of CSEF, students may be eligible for assistance if they attend a Victorian registered primary or secondary school. Typically, these students are aged between five and 18 years inclusive.

CSEF is not payable to students attending pre-school, kindergarten, home schooled, or TAFE.

Eligibility Date

For concession card holders CSEF eligibility will be subject to the parent/legal guardian's concession card being successfully validated with Centrelink on the first day of either term one (29 January 2019) or term two (23 April 2019).

PAYMENT AMOUNTS

CSEF payment amount

The CSEF is an annual payment to the school to be used towards camps, sports and/or excursion expenses for the benefit of the eligible student.

- Primary school student rate: \$125 per year.
- Secondary school student rate: \$225 per year.

The CSEF is paid directly to your child's school and will be allocated by the school towards camps, sports and/or excursion costs for your child.

For ungraded students, the rate payable is determined by the student's date of birth. For more information, see: www.education.vic.gov.au/csef

Year 7 government school students who are CSEF recipients are also eligible for a uniform voucher. Secondary schools are required to make applications on behalf of parents so please register your interest at the school.

HOW TO COMPLETE THE APPLICATION FORM

NOTE: ALL SECTIONS MUST BE COMPLETED BY PARENT/LEGAL GUARDIAN

1. Complete the PARENT/LEGAL GUARDIAN DETAILS section.
Make sure that the Surname, First Name, and Customer Reference Number (CRN) details match those on your concession card. You will also need to provide your concession card to the school.
If you are claiming as a Foster Parent or a Veteran Affairs Pensioner, you will need to provide a copy of documentation confirming your status as a temporary Foster Parent or provide your Veterans Affairs Pensioner Gold card to the school.
2. Complete the STUDENT/S DETAILS section for students at this school.
3. Sign and date the form and return it to the school office as soon as possible. The CSEF program for 2019 closes on 28 June, 2019.

CSEF payments cannot be claimed retrospectively for prior years.

Queries relating to CSEF eligibility and payments should be directed to the school.