



**Mitcham**  
Primary School  
thinkers | learners | leaders

## MITCHAM PRIMARY SCHOOL NEWSLETTER

# Mitchat

### IMPORTANT DATES

- MAY 18** OPEN DAY
  - MAY 20** SPECIAL PERSON DAY
  - MAY 22** SPORTSFIELD OPENING
  - MAY 22** NEW ZEALAND PARENT INFORMATION EVENING
  - MAY 23** WORKING OPEN DAY
  - MAY 24** MITCHKIDS
  - MAY 31** SCHOOL PHOTOS
  - JUNE 3** BOOK FAIR OPEN
  - JUNE 4** BOOK FAIR OPEN
  - JUNE 5** BOOK FAIR OPEN
  - JUNE 6** BOOK FAIR LAST DAY
  - JUNE 7** MITCHKIDS
  - JUNE 10** QUEEN'S BIRTHDAY
  - JUNE 11** STUDENT FREE DAY
  - JUNE 14** 5/6 WINTER SPORT
- ...SEE PAGE 5 FOR MORE

### VALUE OF THE MONTH

## RESILIENCE



**OUR NEW SPORTSFIELD IS A HIT!**

### IN THIS ISSUE

- FROM THE PRINCIPAL'S DESK
  - FROM THE MITCHAM PRIMARY OFFICE
  - NEWS AND UPDATES
  - GRADE 5/6 PERFORMANCE
  - OSHCLUB NEWS
- ... AND MUCH MORE





MITCHAM PRIMARY OPEN DAYS



**OPEN  
DAY**

Saturday 18 May  
10.00am - 1.00pm

**WORKING  
OPEN DAY**

Thursday 23 May  
10.00am - 1.00pm

**Mitcham Primary School**  
**PH. (03) 9873 1551**

**T** (03) 9873 1551

**E** [mitcham.ps@edumail.vic.gov.au](mailto:mitcham.ps@edumail.vic.gov.au)

**W** [mitcham.ps.vic.edu.au](http://mitcham.ps.vic.edu.au)

**Follow Us:**



# FROM THE PRINCIPAL'S DESK

## NEW SPORTSFIELD

Hip-hip hooray!!! Our New Sportsfield is complete!

I am certain your children will have excitedly already told you this, but we are very happy to announce that our new Sportsfield is now complete and children are loving running and playing on the beautiful new surface. On Wednesday next week all the children will be involved in an 'official opening' ceremony.



## OPEN DAY

Open Day is tomorrow from 10.00am until 1.00pm and we would welcome all our families and friends of Mitcham Primary to visit the school, explore classrooms, celebrate and chat with our staff about all the wonderful opportunities and programs we offer.

## GRANDPARENTS AND SPECIAL PERSONS DAY MONDAY 20TH MAY 11.30AM - 1.00PM

Next week is Education Week and we like to open our doors to the children's grandparents and special people. This is a great chance for them to discuss 'when I was at school...' and have the proud children explain how they approach school at Mitcham Primary School in 2019. Commencing at 11:30am, visits to the classrooms will be followed by sharing lunch with students at around 12:30. Spread the word and we will see you then.

## WORKING OPEN DAY

If you are unable to make it on Saturday we would love to see you on Thursday during our Working

Open Day between 10.00am and 1.00pm. Our Working Open Day gives people an opportunity to see the school in action, observing normal classroom routines.

## NATIONAL SIMULTANEOUS STORY TIME

National Simultaneous Story Time is this Wednesday 22 May – and our school is registered!

This year's book is *Alpacas with Maracas*.

National Simultaneous Storytime (NSS) is held annually by the Australian Library and Information Association (ALIA). Every year a picture book, written and illustrated by an Australian author and illustrator, is read simultaneously in libraries, schools, pre-schools, childcare centres, family homes, bookshops and many other places around the country. Now in its 19th year, it is a simple yet fun event, coinciding with Education Week, that aims to promote the value of reading and literacy using an Australian children's book that explores age-appropriate themes, and addresses key learning areas of the National Curriculum for Foundation to Year 6.

The idea is that at 11.00am on Wednesday 22 May, there will be '1 million kids reading' this year's selected text. Students will be enjoying this event in their classrooms.

## NEW ENROLMENTS

Do you have children already at Mitcham Primary School and a little one about to start Prep next year? You need to contact the office and enrol now. Or if you know of a friend whose child is at kinder, and is expecting them to start here in 2020, please let them know that enrolments are being taken now and if they would like a tour of the school to please contact the office.

Wishing all families a lovely weekend.

**Erin Norman**

**Principal**



# MitchKids Playgroup



**May**

**Friday May 10  
Friday May 24**

**June**

**Friday June 7  
Friday June 21**

**10.00 - 11.00am**



**July**

**Friday July 19**



**Mitcham Primary School  
294 Mitcham Road, Mitcham  
Phone: 9873-1551**

**August**

**Friday Aug 2  
Friday Aug 16  
Friday Aug 30**

**September**

**Friday Sept 13**



# IMPORTANT DATES

DATE	EVENT
18 May	Open Day
20 May	Grandparents/Special Person Day
21 May	Robotics Workshop
22 May	Official Sportsfield Opening National Simultaneous Storytime Robotics Workshop New Zealand Parent Information Evening
23 May	Working Open Day & Morning Tea Robotics Workshop
24 May	Mitchkids Robotics Workshop School & House Captains Sorry Day Ceremony Excursion
31 May	School Photos
3 June - 6 June	Book Fair Open for Sales
7 June	Mitchkids
10 June	Queen's Birthday Public Holiday
11 June	Student Free Day
14 June	Grade 5/6 Winter Sport
21 June	Grade 5/6 Winter Sport Mitchkids
24 June	House & School Captains Sorry Day Excursion
25 June	Woolworths Earn and Learn Ends
26 June	After School Chess Finishes for Term 2
28 June	Last Day Term 2

DATE	EVENT
15 July	First Day Term 3
19 July	The Ridiculous Rhyme Show Visit
17 - 23 August	Book Week
23 August	Grade 5/6 Summer Sport
26 August - 28 August	Grade 3/4 Camp 1
28 August - 30 August	Grade 3/4 Camp 2
2 September	District Athletics
5 September	Grade 5/6 Performance
6 September	Grade 5/6 Summer Sport
20 September	Last Day Term 3
7 October	First Day Term 4
4 November	Student Free Day
6 November	Grade 3 - 6 Swimming Commences
15 November	Grade 3 - 6 Swimming Ends
18 November	Prep - 2 Swimming Commenced
29 November	Prep - 2 Swimming Ends
20 December	Last Day Term 4

## ADVERTISING NOTE

The Department of Education and Training and Early Childhood Development (DEECD) does not endorse the products or services of any private advertisers. No responsibility is accepted by DEECD for accuracy of information.



**Mitcham**  
Primary School  
thinkers | learners | leaders





# Mitcham Primary School ~ Book Fair ~

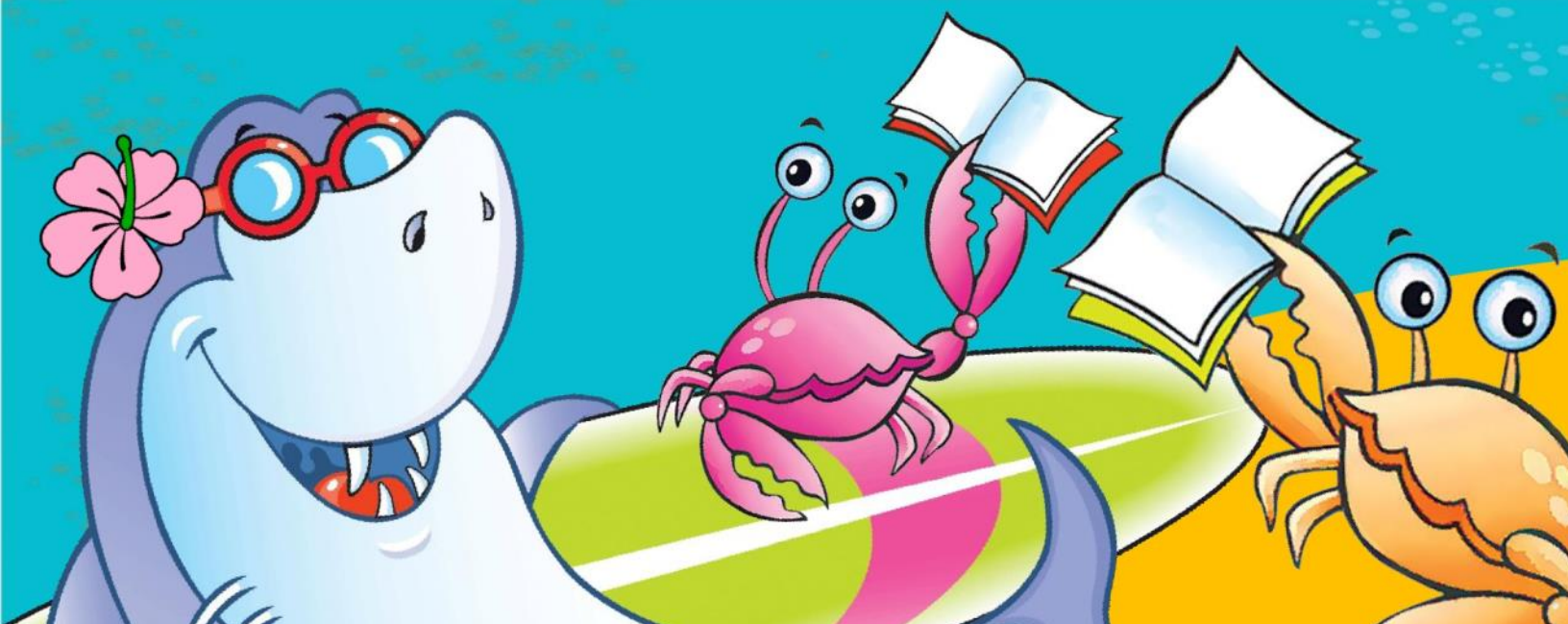
MONDAY 3 JUNE - THURSDAY 6 JUNE

Before School: 8.15 am - 8.45 am

After School: 3.15 pm - 3.45 pm

## See you in the Library

GUESSING COMPETITION . RAFFLE . DESIGN A SURFBOARD



# FROM THE MITCHAM PRIMARY OFFICE

## CSEF (CAMPS & SCHOOL EXCURSIONS FUND)

The Camps, Sports and Excursions Fund (CSEF) provides payments for eligible students to attend activities like:

- School camps or trips
- Swimming and school-organised sport programs
- Outdoor education programs
- Excursions and incursions.

Applications for 2019 are now open and will close on 28 June 2019 (end of Term 2). Families holding a valid means-tested concession card or temporary foster parents are eligible to apply.

Successful applicants will receive \$125 per year for eligible primary school students. Payments are made directly to the school and are tied to the individual student. Most payments start from March onwards.

Payments are for the application year and cannot be claimed for previous years.

The CSEF payment cannot be used towards voluntary school charges, books, stationery, school uniforms, before/after school care, music lessons, or formals/graduations.

You will only need to submit an application form in 2019 if any of the following changes have occurred:

- Your child has started or changed schools in 2019 or you did not apply at the same school in a previous year
- Changed family circumstances: such as a change of custody, change of name, concession card number, or new siblings commencing at the school in 2019.

We are able to accept and process applications up until the end of term two each year.

The payment system only allows one application per student. Parents in shared custody situations (who both hold a concession card) must make the decision beforehand who applies for the CSEF at the school on behalf of their children.

If you have already paid for some camp, sports or excursion costs up front, you have the option to:

- Allocate the payment towards remaining activities in 2019
- Carry over the amount to be used on eligible activities in 2020

Please note, CSEF funds cannot be directly refunded to families.

If you think you may be eligible, and are yet to apply, or would like more information, please see the information and application sheets enclosed in the later pages of this newsletter.

Alternatively, contact our school office for more information.

## STATE SCHOOLS' RELIEF

Prep students who are applicable for the CSEF fund may also be able to receive support for school uniforms through State Schools' Relief.

State Schools' Relief helps with the cost of new school uniforms, shoes and books for families who are facing hardship.

The Victorian Government has provided more than \$15.65 million to State Schools' Relief to help provide 100,000 students with free or discounted new school uniforms, shoes and books over four years (2015-19).

For students commencing prep in 2019, State Schools' Relief can provide a winter warmer uniform package:

- 1 x rugby top or windcheater or polo long sleeve
- 1 x tracksuit pants
- 1 x pair of shoes (lace up or t-bar or runner/sneaker)

To apply, make sure you lodge your application for CSEF before the closing date and ensure you speak to the office about a uniform pack.

If your application is successful, uniform items and vouchers may be given directly to you, or the school. The school will contact you to pass on the items.

Please see the ladies in our office for more information or assistance.



**A SPECIAL DAY AT  
MITCHAM PRIMARY SCHOOL**



**SAVE THE  
DATE**

**MONDAY 20 MAY**



**GRANDPARENTS AND  
SPECIAL VISITORS DAY!**



# NEWS AND UPDATES

## ART ROOM DONATIONS

The art room welcomes your donations. Most supplies on the list are recyclable materials commonly found around the home. If you have other unique items that are not on the list but think they could be used in art, do not hesitate to contact Miss McFarland. We appreciate any donations to use in class throughout the year. We are very creative artists and can find a use for most things!

- Magazines and newspapers
- Paper towel rolls
- Plastic cups or tubs
- Foil trays
- Clean tomato sauce bottles
- Cling wrap and aluminium foil
- Small cardboard boxes e.g. coffee pod/sachet boxes
- Milo/coffee Tins
- Bottle tops

## DONUT FRIDAYS: HELPERS NEEDED

Donut Fridays needs you!

With the chillier weather creeping up on us, we have started selling delicious cinnamon donuts from the school canteen each Friday lunchtime. This is a fabulous fundraiser for the school, and we need your help! If you can spare 1.5 hours on a Friday to sell donuts to our happy kids, please sign up by [clicking here](#), or visiting:

[signupschedule.com/mitchamprimary](http://signupschedule.com/mitchamprimary)

Please ensure you have completed parent helper training prior to signing up. We are seeking at least THREE volunteers per week for this to go ahead. We can't do this without you! Thank you for your support.

## BOOK FAIR: HELPERS NEEDED

The Book Fair is nearly here and we need your help! Open for sales before school (8.15am – 8.45pm) and after school (3.15pm – 3.45pm) from Monday 3

June until Thursday 6 June, we are in need of Parent Helpers to assist with sales throughout each session.

If you have completed the Parent Helper training with Kathy Lawson this year, hold a current Working with Children Check, and are happy and willing to help with sales at the Fair, simply contact or visit our school Library to add your name to the roster situated on the window behind the circulation desk.

Any assistance at all will be greatly appreciated.

## WOOLWORTHS EARN & LEARN

This year we will be participating in the Woolworths Earn & Learn program. Through this program we will be able to get new educational resources for our school – and all we need you to do is to shop for your groceries at Woolworths.

From 1st May until 25 June, we are collecting Woolworths Earn & Learn Stickers. You will get one Woolworths Earn & Learn Sticker for every \$10 spent (excluding liquor, tobacco and gift cards). Place the Woolworths Earn & Learn Sticker onto a Woolworths Earn & Learn Sticker Sheet (coming home with your child today) and when it's complete, the Sticker Sheet can be dropped into the Collection Box here at the school or at the Woolworths in Eastland. Additional Sticker Sheets are available from the School Office.

At the end of the promotion, we'll be able to get some great new equipment. The range is extensive and offers lots of items ideal for our students – including resources for Maths, English, Science and some fantastic fun supplies for Arts & Craft, Sport and for our library. If you'd like to know more visit [woolworths.com.au/earnandlearn](http://woolworths.com.au/earnandlearn)

## SCHOOL PHOTOS

This year the school photos will be taken on Friday 31st May. The company will send out packs to all students closer the date. Please note this date in your diary.

## 2019 EDUCATION WEEK: 18TH - 25TH MAY

Every year Mitcham Primary School celebrates Education Week with a range of fun activities, we love

## NEWS AND UPDATES: CONTINUED

having our families come and be a part of all the fun. Pencil the following dates into your diaries:

- Saturday Open Day, 18th May
- Grandparents' Day, Monday 20th May
- Sportsfield Opening, Wednesday 22 May
- National Simultaneous Storytime, Wednesday 22 May
- Working Open Day and Morning Tea, Thursday 23rd May
- Robotics Workshops, Friday 17th May and Tuesday 21st – Friday 24th May

### LUNCH ORDER PROVIDER

Lunch orders are available on Monday, Wednesday and Friday. Simply [click here](#), or search the following address in your browser: [www.classroomcuisine.com.au](http://www.classroomcuisine.com.au)

You will need to register an account in your name and select Mitcham Primary School. Once you are in your account there is a tab to add a child. Please add your children and select Mitcham Primary

Placing orders can be done up until 8.30 the morning of the lunch day.

The option to select future dates is available to place orders, if your child is not attending school on the future day you can cancel the order the morning of the absence.

Payment is required at the time of ordering with a credit card.

See our lunch order menu in the following pages.

### SCHOOL BANKING

Does your child want to be part of School Banking?

The school banking program is a great way to start creating good financial habits. There are also great reward items to redeem after each 10 deposits, as it is an incentive for banking regularly and not a monetary exercise.

If you're interested in your child taking part in School Banking, visit your local Commonwealth Bank branch and ask to open up a School Banking or 'Dollarmites' account for your child.

School banking takes place every Wednesday.



**1/2 STUDENTS ARE ENJOYING THEIR YOGA SESSIONS!**





# This is



MITCHAM PRIMARY SCHOOL 2019  
Grade 5/6 Performance

## What'S There Not To Like?

By MARK & HELEN JOHNSON  
AND STEWART HENDERSON



## GRADE 5/6 PERFORMANCE: 'THIS IS ME'

This year's Grade 5 and 6 performance is called 'This Is Me!'.

Congratulations to the following four students for being cast into the main roles for the play: Samaira 5/6L (Girl), Scarlett 5/6I (Grandma), Escher 4-6L (Boy) and Inti 5/6K (Grandpa).

We had a lot of students turn up to the auditions in Term 1 and it was difficult to choose the main characters due to the quality of the auditions. The main characters are currently working with Mrs Wickham to write the script for this year's performance. The Grade 5 and 6 students are much more involved in the process of creating scenes, choreography, props and sets this year, which is one of the main differences between performances and productions.

Please ensure you save the date, **Thursday, 5th September, 2019**, to come and see the performance this year. Tickets will be made available online in Term 3.

*Mrs Wickham - Performing Arts Teacher*



## HAPPY BIRTHDAY!



Mica - 1-3 A

Yui - 1-3 B

Christina - 3/4 D

Marlie - 3/4 A

Aiden - 1-3 B



# EXTRA CURRICULAR ACTIVITIES 2019

CLUB/ACTIVITY	COST (Y/N)	DAY OF WEEK	WHEN	STUDENTS INVOLVED	ORGANISER
Before School Reading	N	Tuesday	Before school	All Welcome	Heather Wood
Bonsai Club	Y	TBC*	During school	Grade 5/6s	Marina Rich
Chess Club	Y	Wednesday	After school	All Welcome	Heather Wood
Five Six Mix Choir	N	Thursday	During lunch	Grade 5/6s	Natalie Wickham
Gardening & Sustainability Club	N	Monday	During lunch	All Welcome	Marina Rich, Laura Luscombe & Kate Medcalf
Hot Shots Tennis	Y	Multiple	During & After School.	All Welcome	Contact Office
Instrumental Music	Y	Various	During school	All Welcome	Contact Office
Junior School Council	N	Various	During school	Elected students	Jayne Koth, Tracey Irvine & Kate Medcalf
Kelly Sports	Y	Multiple	During lunch	All Welcome	Contact Office
Lunchtime Library Sessions	N	Wednesday & Friday	During lunch	All Welcome	Erin Norman
Media	N	Thursday	During school	Media Team	Tracey Irvine & Emma Bates
Mitcham Melodies Choir	N	Thursday	During lunch	Grade 3/4	Jess Yuen, Emma Bates & Deb Williamson
Mitcham Music Makers	N	TBC	During lunch	Grades 4-6	Natalie Wickham
New Zealand Exchange	Y	N/A	N/A	Grade 5/6s	Heather Wood
Peer Mediation	N	Various	During recess	Grade 6s	Tracey Irvine, Laura Luscombe & Marianne McKay
Perceptual Motor Program	N	Monday	During school	Preps	Val Berardini
Quiet Space	N	Tuesday, Wednesday & Thursday	During lunch	All Welcome	Michelle Dybing
Robotics Club	N	Friday	During lunch	TBC	Netanel Koles
Running Club	N	Friday	Before school	Grades 3-6	Laura Ellis & Tracey Irvine
Street Dance Studios	Y	Tuesday	During lunch	Grades 4 - 6	SDS Staff
Snack and Study	N	Thursday	After school	EAL Students	Michelle Dybing
Tournament of Minds	N	TBC	TBC	Grade 5/6s	TBC
Grade 5/6 Games	N	Friday	During Lunch	Grade 5/6	Paul Bremner (Volunteer)



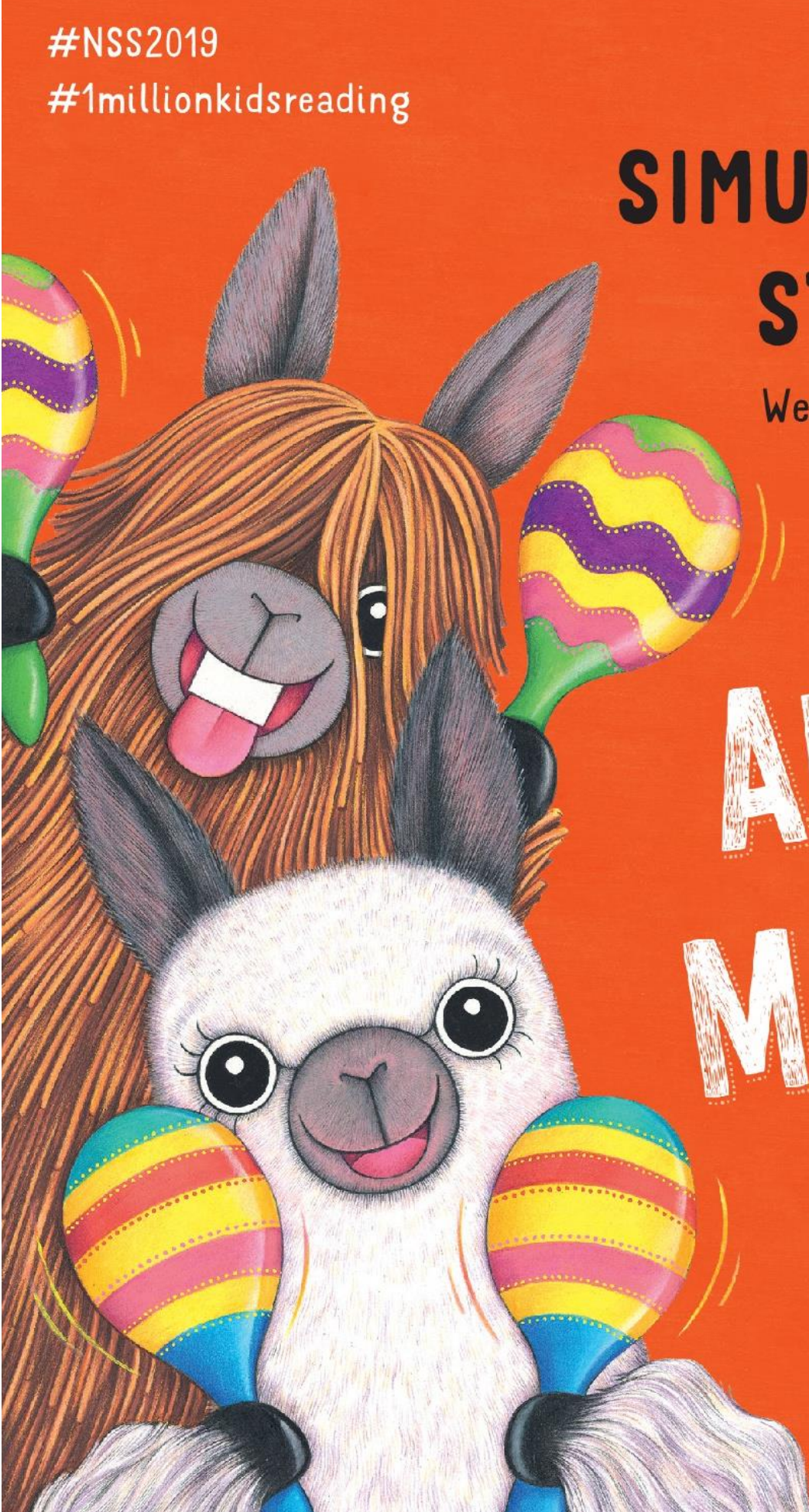
#NSS2019

#1millionkidsreading

# NATIONAL SIMULTANEOUS STORYTIME

Wednesday 22 May 2019

[alia.org.au/nss](http://alia.org.au/nss)

An illustration of two alpacas against a bright orange background. The alpaca in the foreground is white with large, dark eyes and a smiling mouth, holding two colorful maracas with yellow, red, and blue stripes. Behind it is a brown alpaca with its tongue sticking out, also holding a maraca with yellow, purple, and green stripes. There are motion lines around the maracas, suggesting they are being shaken.

## Alpacas with Maracas

MATT COSGROVE



Australian Library and  
Information Association

 SCHOLASTIC

LIANZA



Dear Mitcham OSHClub Parents,

Hello everyone! This week children have been busy working on space alien posters. Along with this, our main focus was on our multicultural wall, working on flags of the country our families come from.

Wednesday was the best day, as Mrs Norman allowed us to use the new play area, our new sportsfield, which we have been eagerly waiting for the last couple of weeks. We enjoyed running around the track and sitting on the grass enjoying the sunshine.

We will be helping at the Working Bee for the first time this Friday, the 17th of May.

We are working on providing varied play areas based on children's interests, please feel free to pop in and provide suggestions or feedback. We will be soon saying good bye to our tennis table and some of our old cupboards, if you're interested, please come in and have a look.

We are in the process of developing a program specific philosophy. If anyone is interested, please ask for a questionnaire sheet. Any input will be highly appreciated.

## UPDATE IN THE BOOKING POLICY FOR BSC AND ASC SESSIONS

- Parents will not be able to book online within 24 hours as the system is locked 24 hours before the session commence time.
- Parents can book their child(ren) into the program on the day by calling or texting 0422 097 497.
- Program times are from 7am—9am and 2:30pm—6:30pm, bookings will be confirmed during these times.
- A late booking fee of \$4 will automatically be charged when a booking is made at short notice (0-24 hrs ahead of the start time of the session). This fee was waived last term for goodwill as the CCS was stabilising – it is part of our usual T&C's.
- When a child is booked but does not attend, and there's been no notification that they will be absent, a \$5 'no-show' fee will be incurred.

- Our cancellation policy is now 48 hours before the session commences. Cancellations within 48 hours will incur full fee.

## UPDATING CONTACT DETAILS

Please remember to update your family's contact details, especially phone numbers, addresses, and any medical conditions on the enrolment form if there is any change. This can be done online at:

[www.oshclub.com.au](http://www.oshclub.com.au)

WEEK 5 : BEFORE SCHOOL CARE	
DAY	ACTIVITY
MONDAY	Bookmarks & Running Race
TUESDAY	Butterfly Origami & Silent Ball
WEDNESDAY	'Me' Flag & Cone Soccer
THURSDAY	Complex Animal Designs & Spider Web Climbing Challenge
FRIDAY	Animal Posters & Four Square
WEEK 5 : AFTER SCHOOL CARE	
DAY	ACTIVITY
MONDAY	Origami Dinosaur & 2 Leg Race
TUESDAY	100s and 1000s Sparkle Biscuits & Poison Basketball Game
WEDNESDAY	Creating Flags & Act it Out
THURSDAY	Creating a Quiz & Aboriginal Dot Painting
FRIDAY	How to Draw Minecraft Characters & Beanbag Throw

**Enrol Now:** [www.oshclub.com.au](http://www.oshclub.com.au)

**OSHClub Program Phone:** 0422 097 497

**OSHClub Head Office:** 1300 395 735

**Program Coordinator:** Jagruti

**Program Assistants:** Lekky and Jess (permanent), Jane, Maylee, Ashleigh, Jade and Maria (casuals).





## DEAR FAMILIES,

If we want children to read independently, they need to have easy access to a wide assortment of fiction and nonfiction books, choice in what they read, and time to practise reading. Given a good selection of books, all kids read more. And those who read more books get more practice and become better readers.

## READ 10 MINUTES EVERY DAY IN MAY

### Here are some great ways to get your child reading:

- 1 Set aside a regular reading time. Pick a time that is suitable for everyone. It might be before bedtime or even after homework.
- 2 Pick a reading place. It is important that everyone is comfortable so they can enjoy the book. Try reading in the living room, or maybe seated at the dinner table works best.
- 3 Read together. One person can read the book, or family members can take turns.
- 4 Visit your local library. Enjoy free resources such as books and read-aloud events.
- 5 Involve and engage the whole family. Before reading, point to the book's title, author and illustrator. Ask listeners, 'What do you think the story is going to be about?' As you read, ask them what they think will happen next. And be sure to use exciting voices to engage listeners!
- 6 Fill your home with reading materials. Place books, magazines, newspapers, cookbooks and more throughout the house so your child is surrounded by things to read.
- 7 Get caught reading yourself. When your child sees you read, they will be inspired to read.
- 8 Have older siblings read to younger siblings. By reading to a younger sibling, the reader will gain confidence.
- 9 Start seasonal traditions. Pick a book to read every year when your child goes back to school. You can also read the same special book during a holiday.
- 10 Keep favourite books around. It can be comforting for a new reader to build confidence and fluency by practising when re-reading a favourite book.

Research shows that children who read books for just **10 minutes a day** perform better in school.\*

\*Research conducted by the National Centre for Family Literacy.

Illustrations from *Cowboy and Birdbrain* by Adam Wallace and James Hart.  
Illustrations © James Hart, 2019







# JOIN OUR READ MORE IN MAY CHALLENGE!

Every year during **National Family Reading Month**, Scholastic holds an exciting reading challenge as part of the celebration.

Research shows that family reading time is one of the **BEST** ways to grow a child's interest in the wonderful world of books. Kids who read, succeed!

Have fun reading together and good luck in our prize draw!

**\$10,000 WORTH OF  
PRIZES TO BE WON!**

## TEACHERS:

1. Get your students Reading More in May! Photocopy and distribute this **Reading Log** to your students (see right).

You could **WIN \$100**  
in Scholastic Rewards!



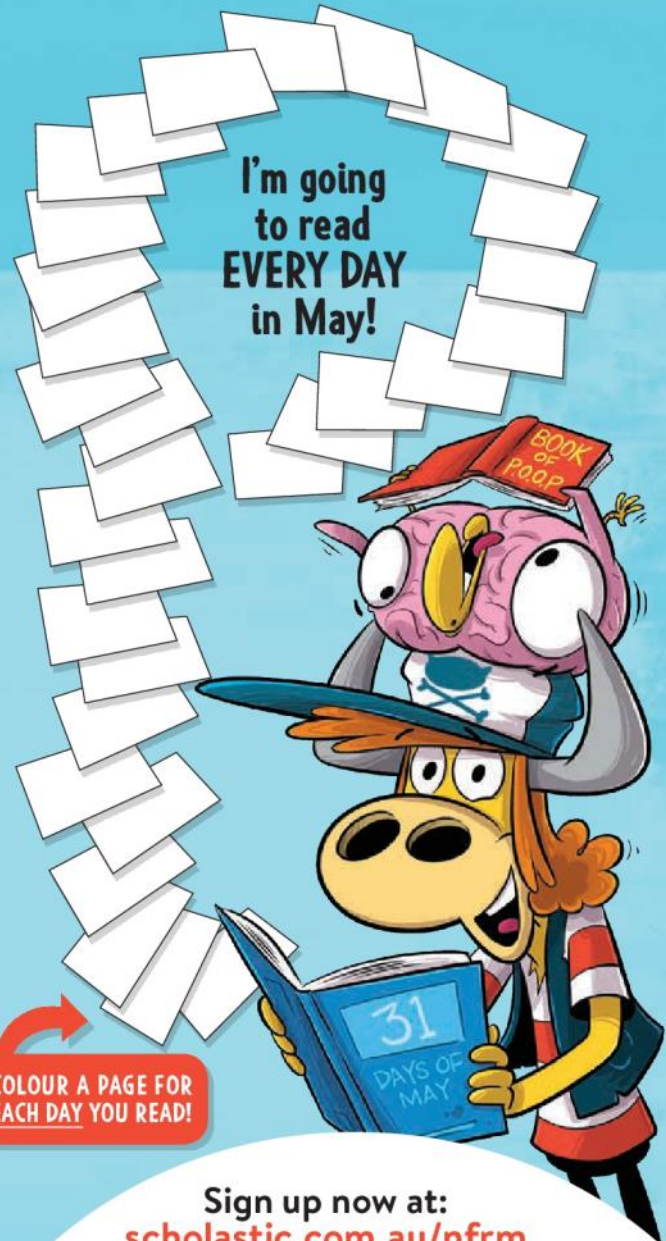
**SCHOLASTIC  
REWARDS**  
ONE REWARD = \$1

## FAMILIES:

Read every day in May and  
go into the draw to **WIN 1 of 50**  
**\$100 book vouchers!**

2. Read for at least 10 minutes every day in May, and colour in the pages on the **Reading Log** to show your progress.
3. Sign up at [scholastic.com.au/nfrm](http://scholastic.com.au/nfrm) to enter you and your teacher into the draw. Entries close 7 June 2019.
4. Keep this **Reading Log** in a handy place as proof of participation in case you are drawn as a winner!

For terms and conditions visit:  
**[scholastic.com.au/nfrm](http://scholastic.com.au/nfrm)**



**COLOUR A PAGE FOR  
EACH DAY YOU READ!**

Sign up now at:  
**[scholastic.com.au/nfrm](http://scholastic.com.au/nfrm)**  
to go in the draw to **WIN** great  
prizes for you and your teacher!  
Competition closes 7 June 2019.

Name: \_\_\_\_\_

Teacher: \_\_\_\_\_

Parent's signature: \_\_\_\_\_

# bringing up great kids

Would you like to understand why your **child** behaves the way they do?

Are you interested in knowing more about why you **parent** the way you do?

Would you like to explore how to enhance your parenting and relationship with your child?

Bringing up Great Kids (BUGK) is a program that uses mindfulness and reflection to support parents / carers of children as they review and enhance their patterns of communication with their children.

The BUGK Program supports parents as they explore what influences their parenting practices, and the messages they're passing on to their children.

The program aims to work with parents as they establish a new relationship context with their children.

**For more information or to register, please contact Sandra Fawcett on 9871 1802**

**Who** Parents / Carers of children aged 0-10 years

**Where** Mitcham Family Centre  
15 Brunswick Road  
Mitcham

**When** Thursdays  
6<sup>th</sup> June – 27<sup>th</sup> June 2019  
(4 consecutive weeks)

**Time** 9.30am – 12pm

**Cost** Free  
(tea/coffee/snacks provided)

\*Sorry no child minding available

This program is funded by the City of Whitehorse



# Anyone can earn stickers to help local schools



The Woolworths Earn & Learn program gives schools and Early Learning Centres around Australia the chance to earn amazing school equipment. In 2017 we had over 15,000 schools and Early Learning Centres involved, and delivered over 300,000 new pieces of equipment to kids all over Australia.

Here's what to do:



Between 1 May and 25 June 2019, collect as many stickers as you can.



Stick them on the sticker sheets and give them to your local school or Early Learning Centre. Or drop them into a collection box in store.

Don't forget, you can always download and print extra sticker sheets at [woolworths.com.au/earnandlearn](http://woolworths.com.au/earnandlearn)

## Need more information?

To read our Frequently Asked Questions and Terms & Conditions visit [woolworths.com.au/earnandlearn](http://woolworths.com.au/earnandlearn)



# My Woolworths Earn & Learn stickers



Stick your Woolworths Earn & Learn stickers in the squares below.  
Give them to your local school or Early Learning Centre, or drop them  
into a collection box in store by 25 June 2019.

My name: \_\_\_\_\_

Collecting for: \_\_\_\_\_



Entry to the promotion is open to primary and secondary schools, and eligible Early Learning Centres (ELC) in Australia. Promotion runs 1 May 2019 until 25 June 2019. Speak to your school or ELC to ensure they are registered, or visit [woolworths.com.au/earnandlearn](http://woolworths.com.au/earnandlearn) and check online. Participants must be registered by 25 June 2019. One Woolworths Earn & Learn sticker is given for every \$10 spent in a single transaction at Woolworths Supermarkets, Woolworths Metro and online, excluding liquor, tobacco, gift cards and other specified purchases. While stocks last. Stickers must be counted and submitted by 7 July 2019. Stickers must be redeemed for equipment by 21 July 2019. Retain stickers for validation. For full terms and conditions, please visit [woolworths.com.au/earnandlearn](http://woolworths.com.au/earnandlearn)



**Commencing a Trial with MITCHAM PRIMARY in T1, 2019!**

**A Two Course Lunch is \$8.95 and a Three Course Lunch is \$10.35**

**AVAILABLE – MONDAY'S, WEDNESDAY'S & FRIDAY'S!**

**LUNCH ITEM ONE**

**SALADS**

Greek Style Salad with Feta and Olives (GF)  
Brown Rice & Mixed Bean Salad (GF)  
Thai Style Noodle Salad (GF)  
Quinoa, Tabouli & Tuna Salad (GF)  
Pasta Salad (GF)  
Pic(k)nic Box – Vegetarian (GF)  
Pic(k)nic Box with Ham (GF)

**SUSHI**

Sushi - Teriyaki Chicken Hand Rolls (2)  
Sushi - Cooked Tuna Hand Rolls (2)  
Sushi - Avocado Hand Rolls (2)  
Sushi - Cucumber Hand Rolls (2)  
Sushi – Vegetarian Hand Rolls (2)

**BAKERY**

Cheese and Bacon Roll  
Cheese and Vegemite Scroll  
Supreme Pizza Roll  
Topped with Only Cheese Roll

**PITA PIZZAS**

Margherita Pita Pizza  
Ham and Pineapple Pita Pizza  
Fresh Tomato and Italian Herb Pita Pizza  
Spinach & Feta Pita Pizza

**SANDWICHES, ROLLS & WRAPS**

Ham, Cheese and Tomato Sandwich  
Turkey, Cranberry, Lettuce and Cheese Sandwich  
Ham and Cheese Roll  
Gluten Free Ham & Cheese Sandwich (GF)  
Simple Salad Roll  
Gluten Free Ham & Cucumber Sandwich (GF)  
Vegemite Sandwich  
Mild Salami and Salad Roll  
Beetroot and Salad Roll  
Roast Beef, Fruit Chutney, Cheese and Lettuce Roll  
Cheese and Salad Roll  
Wholegrain Cheese and Tomato Sandwich  
WRAP (GF) Ham and Salad  
Chicken and Salad Roll  
Wholegrain ROLL Tuna and Salad  
Salad with Ham (No Cheese) ROLL

**LUNCH ITEM TWO/THREE**

**FRESH FRUIT & VEG**

Fresh Fruit Combo  
Freshly chopped Orange Segments  
Freshly chopped Strawberries with Green Grapes  
Apple with Lemon Juice, Brown Sugar & Cinnamon  
Freshly chopped Cantaloupe & Watermelon  
Freshly Chopped Watermelon pieces  
Chopped Carrot, Cucumber, Red & Yellow Capsicum  
Freshly chopped Pineapple with Orange Pieces  
Lightly Steamed Corn Wheels & Broccoli  
Sugar Snap Peas, Beans & Cherry Tomatoes  
Cherry Tomatoes with Tasty Cheese & Rice Crackers

**BAKED GOODS**

Choc Chip Cookie  
Fruit Bun  
Hedgehog Slice  
Finger Bun with Sprinkles  
Banana Cup Cake (GF, DF)  
Iced Cup Cake  
Choc Cup Cake (GF,DF)  
Blueberry Muffin  
Apple & Cinnamon Cake

**YOGHURT**

Chobani Yoghurt - Strawberry  
Chobani Yoghurt - Blueberry  
Chobani Yoghurt - Passionfruit  
Chobani Yoghurt – Plain  
Chia, Banana, Coconut and Strawberry Bowl

**DIPS & CRACKERS**

Tzatziki dip with Rice Crackers  
Avocado dip with Rice Crackers  
Spring Onion dip with Rice Crackers  
Moroccan Carrot dip with Rice Crackers

**POPCORN/SNACKS**

Cobs Popcorn, Lightly Salted  
Cobs Popcorn Slightly Sweet, Lightly Salted  
Lightly salted Fav'va Beans

**DRINKS**

Apple Juice  
Orange Juice  
Nippy's Chocolate Milk

For more information check out our website

**www.classroomcuisine.com.au**

## FINANCIAL ASSISTANCE INFORMATION FOR PARENTS

Every Victorian child should have access to the world of learning opportunities that exist beyond the classroom. The Camps, Sports and Excursions Fund helps ensure that no student will miss out on the opportunity to join their classmates for important, educational and fun activities. It is part of making Victoria the Education State and the Government's commitment to breaking the link between a student's background and their outcomes.

### CAMPS, SPORTS & EXCURSIONS FUND (CSEF)

School camps provide children with inspiring experiences in the great outdoors, excursions encourage a deeper understanding of how the world works and sports teach teamwork, discipline and leadership. All are part of a healthy curriculum.

CSEF is provided by the Victorian Government to assist eligible families to cover the costs of school trips, camps and sporting activities.

If you hold a valid means-tested concession card or are a temporary foster parent, you may be eligible for CSEF. A special consideration category also exists for asylum seeker and refugee families. The allowance is paid to the school to use towards expenses relating to camps, excursions or sporting activities for the benefit of your child.

The annual CSEF amount per student is:

- \$125 for primary school students
- \$225 for secondary school students

### MORE INFORMATION

For more information about the CSEF visit  
[www.education.vic.gov.au/csef](http://www.education.vic.gov.au/csef)

### HOW TO APPLY

New applicants should contact the school office to obtain a CSEF application form or download from [www.education.vic.gov.au/csef](http://www.education.vic.gov.au/csef)

If you applied for the CSEF at your child's school in 2018, you do not need to complete an application form in 2019 unless there has been a change in your family circumstances.

You only need to complete an application form if any of the following changes have occurred:

- **new student enrolments;** your child has started or changed schools in 2019 or you did not apply in 2018.
- **changed family circumstances;** such as a change of custody, change of name, concession card number, or new siblings commencing at the school in 2019.

Check with the school office if you are unsure.





## CAMPS, SPORTS AND EXCURSIONS FUND (CSEF) APPLICATION FORM

School Name

School REF ID

### Parent/legal guardian details

Surname \_\_\_\_\_

First name \_\_\_\_\_

Address \_\_\_\_\_

Town/suburb \_\_\_\_\_ State \_\_\_\_\_ Postcode \_\_\_\_\_

Contact number \_\_\_\_\_

Centrelink pensioner concession **OR** Health care card number (CRN)

-  -  -  **OR**

☐ Foster parent\* **OR** ☐ Veterans affairs pensioner

\*Foster Parents must provide a copy of the temporary care order letter from the Department of Health and Human Services (DHHS).

### Student details

Child's surname	Child's first name	Student ID	Date of birth (dd/mm/yyyy)	Year level

I authorise the Department of Education and Training (DET) to use Centrelink Confirmation eServices to perform an enquiry of my Centrelink customer details and concession card status in order to enable the business to determine if I qualify for a concession, rebate or service. I also authorise the Australian Government Department of Human Services (DHS) to provide the results of that enquiry to DET.

I understand that:

- DHS will use information I have provided to DET to confirm my eligibility for the Camps, Sports and Excursions Fund and will disclose to DET personal information including my name, address, payment and concession card type and status.
- this consent, once signed, remains valid while my child is enrolled at a registered Victorian school unless I withdraw it by contacting the school.
- I can obtain proof of my circumstances/details from DHS and provide it to DET so that my eligibility for the Camps, Sports and Excursions Fund can be determined.
- if I withdraw my consent or do not alternatively provide proof of my circumstances/details, I may not be eligible for the Camps, Sports and Excursions Fund provided by DET.
- information regarding my eligibility for the Camps, Sports and Excursions Fund may be disclosed to the Victorian Department of Health and Human Services and/or State Schools Relief for the purpose of evaluating concession card services or confirming eligibility for assistance.

You are able to request access to the personal information that we hold about you, and to request that any errors be corrected, by contacting your child's school.

Signature of applicant \_\_\_\_\_

Date \_\_\_\_ / \_\_\_\_ / \_\_\_\_

## CSEF ELIGIBILITY

Below is the criteria used to determine a student's eligibility for the Camps, Sports and Excursions Fund (CSEF).

### Criteria 1 – Eligibility

To be eligible\* for the fund, a parent or legal guardian of a student attending a registered Government or non-government Victorian primary or secondary school must:

- on the first day of Term one, or;
- on the first day of Term two;
- a) Be an eligible beneficiary within the meaning of the *State Concessions Act 2004*, that is, be a holder of Veterans Affairs Gold Card or be an eligible Centrelink Health Care Card (HCC) or Pensioner Concession Card (PCC) holder, OR
- b) Be a temporary foster parent, and;
- c) Submit an application to the school by the due date.

\* A special consideration eligibility category also exists. For more information, see: [www.education.vic.gov.au/csef](http://www.education.vic.gov.au/csef)

Parents who receive a Carer Allowance on behalf of a child, or any other benefit or allowance not income tested by Centrelink, are not eligible for the CSEF unless they also comply with one of (a) or (b) above.

### Criteria 2 - Be of school age and attend school in Victoria

School is compulsory for all Victorian children aged between six and 17 years of age inclusive.

For the purposes of CSEF, students may be eligible for assistance if they attend a Victorian registered primary or secondary school. Typically, these students are aged between five and 18 years inclusive.

CSEF is not payable to students attending pre-school, kindergarten, home schooled, or TAFE.

### Eligibility Date

For concession card holders CSEF eligibility will be subject to the parent/legal guardian's concession card being successfully validated with Centrelink on the first day of either term one (29 January 2019) or term two (23 April 2019).

## PAYMENT AMOUNTS

### CSEF payment amount

The CSEF is an annual payment to the school to be used towards camps, sports and/or excursion expenses for the benefit of the eligible student.

- Primary school student rate: \$125 per year.
- Secondary school student rate: \$225 per year.

The CSEF is paid directly to your child's school and will be allocated by the school towards camps, sports and/or excursion costs for your child.

**For ungraded students**, the rate payable is determined by the student's date of birth. For more information, see: [www.education.vic.gov.au/csef](http://www.education.vic.gov.au/csef)

**Year 7 government school students** who are CSEF recipients are also eligible for a uniform voucher. Secondary schools are required to make applications on behalf of parents so please register your interest at the school.

## HOW TO COMPLETE THE APPLICATION FORM

### NOTE: ALL SECTIONS MUST BE COMPLETED BY PARENT/LEGAL GUARDIAN

1. Complete the PARENT/LEGAL GUARDIAN DETAILS section.  
Make sure that the Surname, First Name, and Customer Reference Number (CRN) details match those on your concession card. You will also need to provide your concession card to the school.  
If you are claiming as a Foster Parent or a Veteran Affairs Pensioner, you will need to provide a copy of documentation confirming your status as a temporary Foster Parent or provide your Veterans Affairs Pensioner Gold card to the school.
2. Complete the STUDENT/S DETAILS section for students at this school.
3. Sign and date the form and return it to the school office as soon as possible. The CSEF program for 2019 closes on 28 June, 2019.

CSEF payments cannot be claimed retrospectively for prior years.

**Queries relating to CSEF eligibility and payments should be directed to the school.**





Heatherdale  
PreSchool

'Helping your child to grow'

**OPEN DAY**

**Saturday 25th May  
10.30am–12.30pm**

**12 Purches St, Mitcham**

**Tel: 9874 5020**



- Experienced staff dedicated to nurturing your child
- Learning for life through creative activities and social interaction
- Member of the Stephanie Alexander Kitchen Garden Program



[www.heatherdalepreschool.org](http://www.heatherdalepreschool.org)



**Warekila Preschool  
Open Day**



**Saturday May 18th 2019**

**11.00 am - 1.00 pm**

**Long Day Program**

**Bush Kinder**

**38 Kett Street Nunawading 3131**

**(off Junction Road)**

**Phone 9878 8745**

[www.warekilapreschool.vic.edu.au](http://www.warekilapreschool.vic.edu.au)



**WHITEFRIARS**  
CATHOLIC COLLEGE FOR BOYS

**'Our Students  
Our Curriculum'**



**Open Evening Tuesday 4 June 6.30pm**

**Bookings Required**

**Register at [whitefriars.vic.edu.au](http://whitefriars.vic.edu.au)**

156 Park Road Donvale Vic 3111 *Belong. Believe. Become.*

**OPEN DAY**  
Saturday 18 May  
10.00am - 1.00pm

**WORKING OPEN DAY**  
Thursday 23 May  
10.00am - 1.00pm

**Mitcham Primary School**  
PH. (03) 9873 1551

