



**Mitcham**  
Primary School  
thinkers | learners | leaders

## MITCHAM PRIMARY SCHOOL NEWSLETTER

# Mitchat

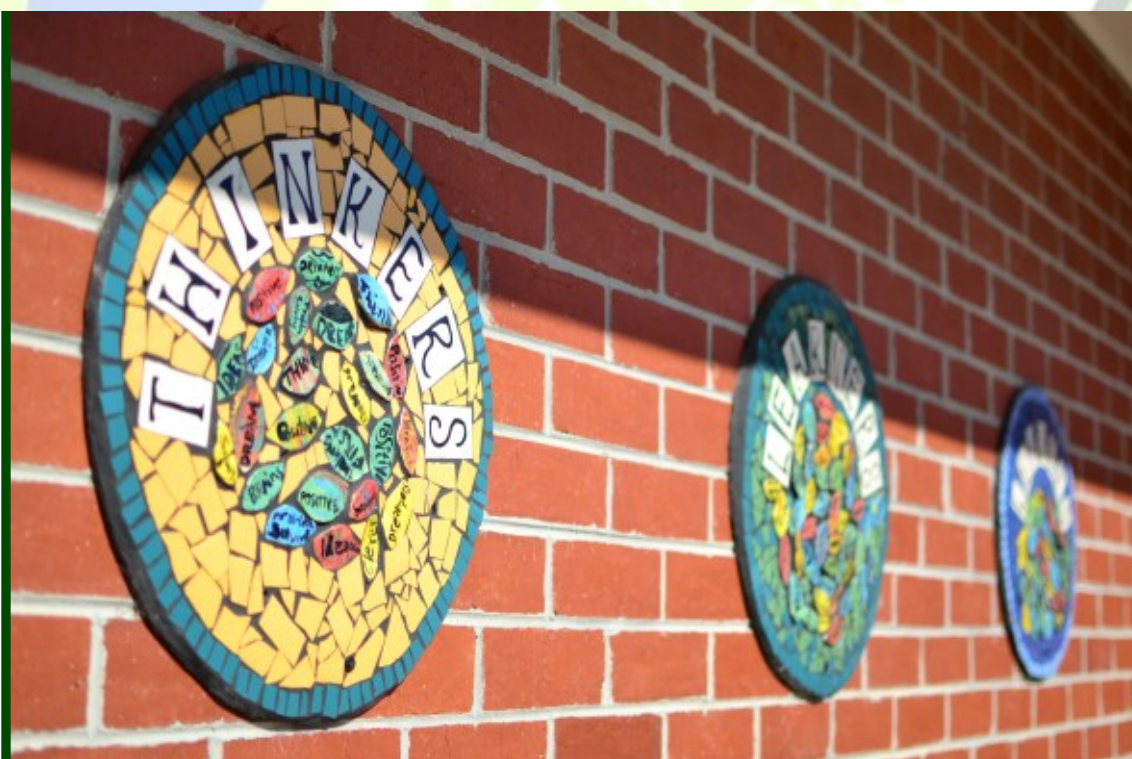
### IMPORTANT DATES

- JUNE 18** FUNDRAISING MEETING
- JUNE 21** 5/6 WINTER SPORT
- JUNE 21** MITCHKIDS
- JUNE 25** EARN & LEARN ENDS
- JUNE 26** CHESS ENDS TERM 2
- JUNE 28** LAST DAY TERM 2
- JULY 15** FIRST DAY TERM 3
- JULY 19** RIDIC. RHYME SHOW
- JULY 22** DIVISION GIRLS FOOTY
- AUG. 2** 3/4 HOOPTIME
- AUG. 7** AUTHOR VISIT
- AUG. 13** 5/6 MULTICULT. CUP
- AUG. 14** GRADE 5/6 HOOPTIME
- AUG. 23** 5/6 SUMMER SPORT
- AUG. 26** 3/4 CAMP 1 DEPARTS
- AUG. 28** 3/4 CAMP 2 DEPARTS

...SEE PAGE 4 FOR MORE

### VALUE OF THE MONTH

## TEAMWORK



### IN THIS ISSUE

- FROM THE PRINCIPAL'S DESK
  - FROM THE ASSISTANT PRINCIPAL'S DESK
  - CHANGES TO SEMESTER 1 REPORTS
  - FROM THE MITCHAM PRIMARY OFFICE
  - NEWS AND UPDATES
- ... AND MUCH MORE



# FROM THE PRINCIPAL'S DESK

I hope you all enjoyed the long weekend and spent some quality time with family and friends.

## SCHOOL COUNCIL

School Council met on Wednesday evening and considered a number of issues outlined below:

## PAINTING

You may have noticed that several of our buildings are currently undergoing a repaint. Inside and out of the multipurpose room is almost complete and the front of the school is almost at the top coat stage, once this is complete, our painter will be turning their brushes to the Indonesian and Maker Space portable.

## BUILDINGS AND GROUNDS

Lucille Matthews our building and grounds coordinator shared details of the 40 plus (mostly native) plants she has recently purchased to plant around the school and especially the weeping gum that has been purchased to replace the gum tree we needed to remove, for safety reasons, outside of the PAC.

Lucille also reported that we will soon be seeing some changes by Whitehorse City Council to traffic control in Bowling Green Lane, this will be in the form of new signage and some changes to parking places. We hope that these changes will make drop offs and pickups safer and less stressful for our students and families.

## FUNDRAISING

Chloe Rees, our fundraising coordinator reported on the continued success of our Donut Fridays and about the positive response to our sustainable living inspired 'Bee Wrappy' fundraiser. Chloe has researched some very exciting options for our major fundraiser for 2019 and will be holding a meeting this coming Tuesday 18th June for parents wanting to help with making her ideas a reality, the meeting will begin at 6:30pm in the Library.

## PARENT LIAISON PERSON UPDATE

You should begin to receive regular updates for your child's class Parent Liaison Person, these updates will be coordinated by Stacie Timmins and may include friendly reminders as well as

invitations to social catch ups.

## FINANCE

Joel Curtis, our treasurer, presented Mitcham Primary School's 2019 Confirmed Budget and reported that we are currently operating comfortably within a balanced budget.

## NEW ZEALAND EXCHANGE

We will be welcoming students from Wakaaranga School to Mitcham Primary School on the 1st September, these students will be staying with their Mitcham Primary School host families for one week and attending school or venturing out to see some of Melbourne's wonderful attractions, before returning to New Zealand on 8th September.

On the 1st of November, nine of our Mitcham Primary School students and two teachers, will travel to New Zealand to experience school life at Wakaaranga School and enjoy visiting and exploring some of New Zealand's sights.

## WORKING BEE

We are holding a Working Bee this Saturday between 1.00pm – 4:00pm. We will be tidying up various areas around the school, and we are hoping to plant out some of our empty garden beds. Everyone is welcome to pitch in and help. A little or a lot of help is always appreciated. As always, we will hold an afternoon tea for the tired workers!

Wishing all families a lovely weekend and hoping for a lovely clear night this evening as several of our Cycle 2 Montessori students enjoy 'stargazing' during their sleepover at school this evening.

**Erin Norman**

**Principal**



**Mitcham  
Primary School**

thinkers | learners | leaders





# FROM THE ASSISTANT PRINCIPAL'S DESK

## MITCHKIDS

The next Mitchkids will be Friday 21<sup>st</sup> June from 10.00 – 11.00 in the Art room. All pre-school children are welcome to attend. This will be the last session for Term 2.



## WORKING BEE REMINDER

The next working bee is on this Saturday 15<sup>th</sup> June from 1.00pm – 4.00pm. We would like to see many people coming up to school to help to get some of the outside work done, including some planting. Grades 1-3J and 1-3M are rostered for this weekend, but everyone is welcome – the more we have the more that we can get done.

## PLANNING WEEK

Next week is our planning week. The specialist times for your children will be different for next week. This allows the teachers at each level to plan together for Term 3, while their grades at the same level will have specialists all on the one day.

## AFTER SCHOOL CHESS

Next week is the second last week of chess for this term. The last session for Chess this term is on Wednesday 26<sup>th</sup> June (the last week of term). We have been enjoying many very good games this term. If you would like your child to participate in the afterschool chess in Term 3 please let the office know. Chess will start again in the second week of Term 3, Wednesday 24<sup>th</sup> July.



## BEFORE SCHOOL READING

Before school reading is held every Tuesday. All students are welcome to come to the library to read from 8:15am. Students should not arrive before 8:15am.

**Heather Wood: Assistant Principal**

# IMPORTANT DATES

DATE	EVENT
18 June	Major Fundraiser Meeting: 6.30pm in the Library
21 June	Grade 5/6 Winter Sport Mitchkids
24 June	Grade 5/6 Winter Sport Backup Date
25 June	Woolworths Earn and Learn Ends
26 June	After School Chess Finishes for Term 2
28 June	Last Day Term 2
15 July	First Day Term 3
19 July	The Ridiculous Rhyme Show Visit
22 July	Division Girls Footy
2 August	3/4 Hooptime
7 August	Adam Wallace Author Visit
13 August	5/6 Multicultural Cup
14 August	5/6 Hooptime
17 - 23 August	Book Week
23 August	Grade 5/6 Summer Sport
26 August - 28 August	Grade 3/4 Camp 1
28 August - 30 August	Grade 3/4 Camp 2
2 September	District Athletics
5 September	Grade 5/6 Performance
6 September	Grade 5/6 Summer Sport
13 September	Grade 5/6 Summer Sport Back up Date

DATE	EVENT
20 September	Last Day Term 3
7 October	First Day Term 4
4 November	Student Free Day
6 November	Grade 3 - 6 Swimming Commences
15 November	Grade 3 - 6 Swimming Ends
18 November	Prep - 2 Swimming Commenced
29 November	Prep - 2 Swimming Ends
20 December	Last Day Term 4
29 January 2020	First Day Term 1, 2020
27 March 2020	Last Day Term 2, 2020
14 April, 2020	First Day Term 2, 2020
26 June, 2020	Last Day Term 2, 2020
13 July, 2020	First Day Term 3, 2020
18 September, 2020	Last Day Term 3, 2020
5 October, 2020	First Day Term 4, 2020
18 December, 2020	Last Day Term 4, 2020



## Mitcham Primary School

thinkers | learners | leaders



# CHANGES TO SEMESTER 1 REPORTS

As part of Mitcham Primary School's commitment to keep parents fully informed about their children's progress at school, we are in the process of enhancing the content of the Semester Reports.

*What will the new report look like?*

## GENERAL COMMENT

The report will begin with a detailed general comment which includes information about your child's learning, behavioural, social and emotional behaviours whilst at school. This includes statements about their independent learning skills, their ability to work in a team, attitude towards their learning along with comments about their social skills and extracurricular activities they may be involved in. This is also accompanied by an overall effort and behavioural scale. Grades 3-6 reports will also include a scale related to homework tasks.

## PERSONAL AND SOCIAL CAPABILITIES

This section is specific to each year level and includes a list of skills taught which relate to personal learning and interpersonal skills

Demonstrated Level of Knowledge & Skill	Requires Support	Working Towards Level	Working At Level	Working Above Level	Working Well Above Level
Demonstrates an ability to persist and adapt when faced with challenging situations.			✓		
Understands the different skills that are required to work well independently and as part of a group.				✓	
Recognises there are similarities and differences between individuals and groups of people.				✓	
Describes the characteristics of cooperative behaviour and how to use these in peer groups.				✓	

## ENGLISH AND MATHEMATICS

A five point achievement scale is used for both English and Mathematics to report student's achievement and progress against the achievement standards. Then follows a comment on students' achievements, their next steps in learning and how you can help at home.

Victorian Curriculum		Rating	Level 3	Level 4	Level 5	Level 6	Level 7
English							
Reading and Viewing	Above				○---●		
Speaking and Listening	Above			○---●			
Writing	Above			○---●			
Mathematics							
Measurement and Geometry	Above			○---●			
Number and Algebra	Above			○---●			
Statistics and Probability	Above			○---●			

## ENGLISH AS AN ADDITIONAL LANGUAGE

Students who attend this program will receive an additional report based on their achievements in this area.

## HUMANITIES AND DIGITAL TECHNOLOGIES

This semester, these curriculum areas are reported against a five point achievement scale to report student's achievement and progress against the achievement standards. This is followed by an overview of the curriculum content taught during the last two terms and a short personalised comment.

## SPECIALIST AREAS

Each specialist section includes an effort and behaviour scale. The teachers have also included a checklist of skills which have been taught over the previous terms and your child's demonstrated level of skill and knowledge against them.

Demonstrated Level of Knowledge & Skill	Requires Support	Working Towards Level	Working At Level	Working Above Level	Working Well Above Level
Demonstrates the beginnings of athletic skills including discus, shot put, throws, triple jump and high jump.			✓		
Collaborates with others to create an original game.			✓		
Demonstrates skills used in 'Net and Wall' sports and shows the beginnings of applying strategy to games.			✓		
Applies basic rules and scoring systems, and demonstrates fair play when participating in games.			✓		



# CHANGES TO SEMESTER 1 REPORTS: CONTINUED

## ACHIEVEMENT SCALES USED AT MITCHAM PRIMARY SCHOOL

This report uses 5 point scales to describe the quality of achievement your child has made this semester and progress against the achievement standards.

### Age-related expected scale:

Well above - Well above the expected level

Above - Above the expected level

At level - At the expected level

Below - Below the expected level

Well below - Well below the expected level

### Demonstrated Level of Knowledge and Skill:

Requires support

Working towards level

Working at level

Working above level

Working well above level

## HAPPY BIRTHDAY!



Raymond - 1/2 A

Jack - 1/2 C

Archie - Prep A

Rachel - 1/2 D

# MitchKids Playgroup



**May**

**Friday May 10  
Friday May 24**

**June**

**Friday June 7  
Friday June 21**

**10.00 - 11.00am**



**July**

**Friday July 19**



**Mitcham Primary School  
294 Mitcham Road, Mitcham  
Phone: 9873-1551**

**August**

**Friday Aug 2  
Friday Aug 16  
Friday Aug 30**

**September**

**Friday Sept 13**





# FROM THE MITCHAM PRIMARY OFFICE

## 2019 VOLUNTARY CONTRIBUTIONS

Thank you to all families who have already made a voluntary contribution to Mitcham Primary School.

In order to operate, Mitcham Primary School relies upon finance from various sources. The two major sources are Government grants and locally raised funds, including Voluntary Contributions.

All voluntary contributions are placed in the Building Fund or Library Fund accounts where the funds are used exclusively for the purposes of:

### Building Fund (tax deductible)

- Construction of school buildings to be used for the purpose connected with the School Curriculum.
- Painting and general maintenance of school buildings, and building insurance.
- Expenditure on carpets that are fixed to the floor of the school building.
- Air conditioning.

### Library Fund (tax deductible):

- Books and collections.
- Furniture and bookshelves.
- Training equipment as well as computer software and hardware.

Your financial support is important in order to provide excellent educational opportunities and programs for all students.

In 2019, if you wish to contribute to the schools' voluntary funds, the suggested amounts are:

- \$80.00 per child for the Library Fund
- \$30.00 per child for the Building Fund

Voluntary Contributions are Tax Deductible, we therefore recommend that these payments are made prior to **Friday 28 June, 2019**.

A receipt will be provided for all Voluntary Contributions.

Thank you for supporting our school and its programs.

## CSEF (CAMPS & SCHOOL EXCURSIONS FUND)

The Camps, Sports and Excursions Fund (CSEF) provides payments for eligible students to attend activities like:

- School camps or trips
- Swimming and school-organised sport programs
- Outdoor education programs
- Excursions and incursions.

Applications for 2019 are now open and will close on **28 June 2019** (end of Term 2). Families holding a valid means-tested concession card or temporary foster parents are eligible to apply.

Successful applicants will receive \$125 per year for eligible primary school students. Payments are made directly to the school and are tied to the individual student. Most payments start from March onwards.

Payments are for the application year and cannot be claimed for previous years.

The CSEF payment cannot be used towards voluntary school charges, books, stationery, school uniforms, before/after school care, music lessons, or formals/graduations.

You will only need to submit an application form in 2019 if any of the following changes have occurred:

- Your child has started or changed schools in 2019 or you did not apply at the same school in a previous year
- Changed family circumstances: such as a change of custody, change of name, concession card number, or new siblings commencing at the school in 2019.

We are able to accept and process applications up until the end of term two each year.

The payment system only allows one application per student. Parents in shared custody situations (who both hold a concession card) must make the decision beforehand who applies for the CSEF at the school on behalf of their children.

If you have already paid for some camp, sports or excursion costs up front, you have the option to:



## FROM THE MITCHAM PRIMARY OFFICE: CONTINUED

- Allocate the payment towards remaining activities in 2019
- Carry over the amount to be used on eligible activities in 2020

Please note, CSEF funds cannot be directly refunded to families.

If you think you may be eligible, and are yet to apply, or would like more information, please see the information and application sheets enclosed in the later pages of this newsletter.

Alternatively, contact our school office for more information.

### STATE SCHOOLS' RELIEF

Prep students who are applicable for the CSEF fund may also be able to receive support for school uniforms through State Schools' Relief.

State Schools' Relief helps with the cost of new school uniforms, shoes and books for families who are facing hardship.

The Victorian Government has provided more than \$15.65 million to State Schools' Relief to help provide 100,000 students with free or discounted new school uniforms, shoes and books over four years (2015-19).

For students commencing prep in 2019, State Schools' Relief can provide a winter warmer uniform package:

- 1 x rugby top or windcheater or polo long sleeve
- 1 x tracksuit pants
- 1 x pair of shoes (lace up or t-bar or runner/sneaker)

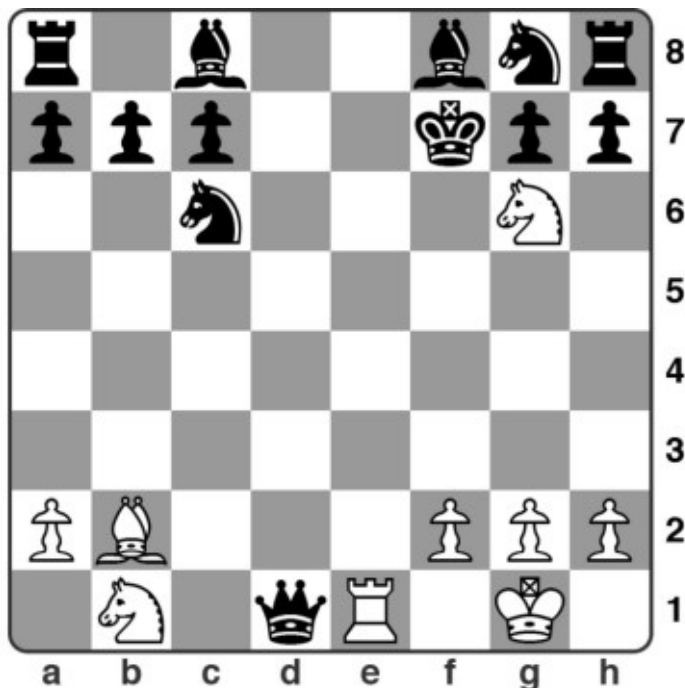
To apply, make sure you lodge your application for CSEF before the closing date and ensure you speak to the office about a uniform pack.

If your application is successful, uniform items and vouchers may be given directly to you, or the school. The school will contact you to pass on the items.

Please see the ladies in our office for more information or assistance.

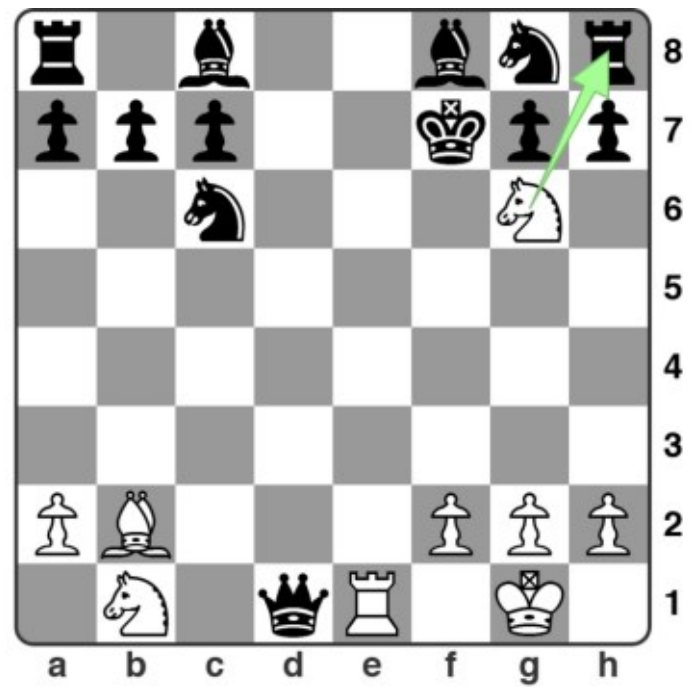
## CHESS PUZZLE

### QUESTION



White to play, what is the best move?

### ANSWER



Checkmate as played by 11 year old  
Paul Morphy, a Chess Prodigy!

# This is



MITCHAM PRIMARY SCHOOL 2019  
Grade 5/6 Performance

## What'S There Not To Like?

By MARK & HELEN JOHNSON  
AND STEWART HENDERSON



# NEWS AND UPDATES

## SCHOOL BANKING VOLUNTEERS NEEDED

Regular saving is a great life lesson for children to learn, and the school banking program is a great way to start creating good financial habits.

If you're interested in helping us develop these habits in the children of Mitcham Primary School, please reach out!

Our dedicated team of School Banking Parent Helpers are currently seeking additional parents to assist in School Banking.

If you are available from 8:45 on Wednesday mornings for approximately one and a half hours, and would like to help facilitate the student's banking program, please contact the school office and leave your details, and one of our friendly team will be touch.

No experience is required, we'll gladly guide you through the process, and commitment does not have to be every week.

We look forward to hearing from you.

*Does your child want to be part of School Banking?*

If you're interested in your child taking part in School Banking, visit your local Commonwealth Bank branch and ask to open up a School Banking or 'Dollarmites' account for your child.

There are also great reward items to redeem after each 10 deposits, as it is an incentive for banking regularly and not a monetary exercise.

[Click here](#) to find out more about signing your child up.

## MAJOR FUNDRAISER MEETING

We are in the process of planning for our 2019 Major Fundraiser!

We won't be able to achieve this without volunteers from our school community and therefore we invite anyone who would like to be involved in the major fundraiser this year, to come to a meeting on Tuesday 18th June at 6.30pm in the Library.

In this meeting, we will discuss the current plans for the major fundraiser, seek ideas and input from attendees and finalise planning for this event. This meeting does not require a concrete commitment from attendees, however we will be seeking to form an official committee following the meeting, as we won't be able to hold the event without a committee and volunteers.

## ENTERTAINMENT BOOKS

Mitcham Primary School are fundraising!

Buy your new Entertainment Membership today!

The 2018 | 2019 Entertainment Memberships are about to expire so now is the perfect time to buy the new 2019 | 2020 Entertainment Membership! You can enjoy thousands of valuable offers for everything you love to do, all while supporting a great cause.

All you have to do is use your Membership twice to cover the cost of it. After that every use means extra dollars in your pocket!

[Click here](#) for a sneak peek at some of the amazing Entertainment Book deals.

[Click here](#) to order your book now.

## 'BEE WRAPPY' FUNDRAISER

To help the Mitcham Primary School Community learn about some of the many ways we can work towards creating a cleaner, happier, healthier world to live in, and a more sustainable future, we introduce our latest fundraiser, organised by the Fundraising Committee in conjunction with the Sustainability Monitors, 'Bee Wrappy'.

Bee Wrappy are beeswax food wraps, used to cover a variety of foods and bowls in the same way your

## 2019 SCHOOL BANKING PRIZES



## NEWS AND UPDATES: CONTINUED

would use plastic cling wrap. The beauty of beeswax wraps is that they are washable, reusable and compostable.

Mitcham Primary School will be selling packs of Bee Wrappy wraps for a cost of \$25.00 per pack.

Please see the order form, sent home with students this week, for more information.

### UNIFORM SHOP CLOSED: FRIDAY 21 JUNE

Due to stocktake, our uniform supplier shop, RHSports will be closed on Friday 21st June. Unfortunately, this means no orders will be shipped, no orders via the web will be downloaded and packed, and the shop will be closed for walk-in parents. The shop will be re-opened on Monday 24th June.

### ART ROOM DONATIONS

The art room welcomes your donations. Most supplies on the list are recyclable materials commonly found around the home. If you have other unique items that are not on the list but think they could be used in art, do not hesitate to contact Miss McFarland. We appreciate any donations to use in class throughout the year. We are very creative artists and can find a use for most things!

- Magazines and newspapers
- Paper towel rolls
- Plastic cups or tubs
- Foil trays
- Clean tomato sauce bottles
- Cling wrap and aluminium foil
- Small cardboard boxes e.g. coffee pod/sachet boxes
- Milo/coffee Tins
- Bottle tops

### LUNCH ORDER PROVIDER

Lunch orders are available on Monday, Wednesday and Friday. Simply [click here](#), or

search the following address in your browser:

[www.classroomcuisine.com.au](http://www.classroomcuisine.com.au)

You will need to register an account in your name and select Mitcham Primary School. Once you are in your account there is a tab to add a child. Please add your children and select Mitcham Primary School and their grade.

Placing orders can be done up until 8.30 the morning of the lunch day.

The option to select future dates is available to place orders, if your child is not attending school on the future day you can cancel the order the morning of the absence.

Payment is required at the time of ordering with a credit card.

See our lunch order menu in the following pages.

### WOOLWORTHS EARN & LEARN

This year we will be participating in the Woolworths Earn & Learn program. Through this program we will be able to get new educational resources for our school – and all we need you to do is to shop for your groceries at Woolworths.

From 1st May until 25 June, we are collecting Woolworths Earn & Learn Stickers. You will get one Woolworths Earn & Learn Sticker for every \$10 spent (excluding liquor, tobacco and gift cards). Place the Woolworths Earn & Learn Sticker onto a Woolworths Earn & Learn Sticker Sheet (coming home with your child today) and when it's complete, the Sticker Sheet can be dropped into the Collection Box here at the school or at the Woolworths in Eastland. Additional Sticker Sheets are available from the School Office.

At the end of the promotion, we'll be able to get some great new equipment. The range is extensive and offers lots of items ideal for our students – including resources for Maths, English, Science and some fantastic fun supplies for Arts & Craft, Sport and for our library. If you'd like to know more visit: [woolworths.com.au/earnandlearn](http://woolworths.com.au/earnandlearn)



# Fundraising

with **BEE WRAPPY®**  
Beeswax Food Wraps

**\$25 for 3 pack**

A reusable, washable and beautiful  
alternative to single use plastic

**3 PACK**

1 small  
1 medium  
1 large

## What are beeswax wraps?

Bee Wrappy Beeswax Food Wraps are used to cover food, vegetables, fruits and bowls in the same way you would use cling film. They are washable, reusable and compostable.

## How do Bee Wrappys work?

With the warmth of your hands, the wraps become malleable. This allows you to mould them around food and bowls, where the wrap will stick to itself, creating a breathable yet protective cover. You can also fold Bee Wrappys into snack-pouches or little envelopes which are perfect for out and about.

## What can I use my beeswax wraps for?

You can use your Bee Wrappys to cover almost any food or bowl in the kitchen.



### Wrap:

- half an avocado or lemon
- almost any vegetable (like pumpkin, celery, cauliflower and zucchini)
- cut fruit
- sandwiches for your lunch or picnics

## What are Bee Wrappys made out of?

Our wraps are made with all-natural ingredients and no nasties. GOTS certified organic cotton, organic Australian beeswax, dammar resin, Australian jojoba oil and virgin coconut oil. That's it. So, you can dispose of your wrap in the compost or green bin knowing that it's 100% bio-degradable.

## How do I wash and take care of them?

**It's super simple!**

Wash your wraps with cold soapy water, and drip dry them in your dish rack. Please keep them away from all heat sources or hot water as they will begin to melt. After they dry you can store them anywhere (we store ours with the tea towels).





# Fundraising

with

**BEE WRAPPY®**

Beeswax Food Wraps



## BEESWAX FOOD WRAPS

### 3 PACK \$25

Made with GOTS certified organic cotton, Australian organic beeswax, dammar resin, jojoba oil and organic virgin coconut oil.

They are breathable, washable, re-useable and compostable.

They love your food longer and we love them for it.

[beewrappy.com.au](http://beewrappy.com.au)



# EXTRA CURRICULAR ACTIVITIES 2019

CLUB/ACTIVITY	COST (Y/N)	DAY OF WEEK	WHEN	STUDENTS INVOLVED	ORGANISER
Before School Reading	N	Tuesday	Before school	All Welcome	Heather Wood
Bonsai Club	Y	TBC*	During school	Grade 5/6s	Marina Rich
Chess Club	Y	Wednesday	After school	All Welcome	Heather Wood
Five Six Mix Choir	N	Thursday	During lunch	Grade 5/6s	Natalie Wickham
Gardening & Sustainability Club	N	Monday	During lunch	All Welcome	Marina Rich, Laura Luscombe & Kate Medcalf
Hot Shots Tennis	Y	Multiple	During & After School.	All Welcome	Contact Office
Instrumental Music	Y	Various	During school	All Welcome	Contact Office
Junior School Council	N	Various	During school	Elected students	Jayne Koth, Tracey Irvine & Kate Medcalf
Kelly Sports	Y	Multiple	During lunch	All Welcome	Contact Office
Lunchtime Library Sessions	N	Wednesday & Friday	During lunch	All Welcome	Erin Norman
Media	N	Thursday	During school	Media Team	Tracey Irvine & Emma Bates
Mitcham Melodies Choir	N	Thursday	During lunch	Grade 3/4	Jess Yuen, Emma Bates & Deb Williamson
Mitcham Music Makers	N	TBC	During lunch	Grades 4-6	Natalie Wickham
New Zealand Exchange	Y	N/A	N/A	Grade 5/6s	Heather Wood
Peer Mediation	N	Various	During recess	Grade 6s	Tracey Irvine, Laura Luscombe & Marianne McKay
Perceptual Motor Program	N	Monday	During school	Preps	Val Berardini
Quiet Space	N	Tuesday, Wednesday & Thursday	During lunch	All Welcome	Michelle Dybing
Robotics Club	N	Friday	During lunch	TBC	Netanel Koles
Running Club	N	Friday	Before school	Grades 3-6	Laura Ellis & Tracey Irvine
Street Dance Studios	Y	Tuesday	During lunch	Grades 4 - 6	SDS Staff
Snack and Study	N	Thursday	After school	EAL Students	Michelle Dybing
Tournament of Minds	N	TBC	TBC	Grade 5/6s	TBC
Grade 5/6 Games	N	Friday	During Lunch	Grade 5/6	Paul Bremner (Volunteer)

Dear Mitcham OSHClub Parents,

Hello everyone! Hope you all had relaxing long weekend!

On the Pupil Free Day, children enjoyed the beautiful weather playing on the Sportsfield. They were also engaged in a colouring contest and baking cupcakes.

During the week we were busy on working on the QIP display which is on the window on top of the portfolios. Feel free to put in suggestions or feedback. A big thank you to all those who have put in their suggestions for the program specific philosophy. Your feedback matters a lot.

Bookings are now open for the Winter School Holidays at MITCHAM OSHCLUB. Please find attached the brochure outlining all the exciting activities, incursions and excursions on offer each day.

We are working on providing varied play areas based on children's interests, please feel free to pop in and provide suggestions or feedback. We will be soon saying good bye to our tennis table and some of our old cupboards, if you're interested, please come in and have a look.

Enjoy the long weekend!

## UPDATE IN THE BOOKING POLICY FOR BSC AND ASC SESSIONS

- Parents will not be able to book online within 24 hours as the system is locked 24 hours before the session commence time.
- Parents can book their child(ren) into the program on the day by calling or texting 0422 097 497.
- Program times are from 7am—9am and 2:30pm—6:30pm, bookings will be confirmed during these times.
- A late booking fee of \$4 will automatically be charged when a booking is made at short notice (0-24 hrs ahead of the start time of the session). This fee was waived last term for goodwill as the CCS was stabilising – it is part of our usual T&C's.
- When a child is booked but does not attend, and there's been no notification that they will be absent, a \$5 'no-show' fee will be incurred.

- Our cancellation policy is now 48 hours before the session commences. Cancellations within 48 hours will incur full fee.

## UPDATING CONTACT DETAILS

Please remember to update your family's contact details, especially phone numbers, addresses, and any medical conditions on the enrolment form if there is any change. This can be done online at:

[www.oshclub.com.au](http://www.oshclub.com.au)

WEEK 9 : BEFORE SCHOOL CARE	
DAY	ACTIVITY
MONDAY	3D Cats & 'Act It Out'
TUESDAY	Balloon String Rockets & Balloon Blowing Race
WEDNESDAY	1980's Friendship Pins & 'Bounce Off'
THURSDAY	African Inspired Art & 'Zip Zag Ball' Passes
FRIDAY	3 Markers Challenge & Bakery Dramatic Play

WEEK 9 : AFTER SCHOOL CARE	
DAY	ACTIVITY
MONDAY	3D Hands & Child 'Tic Tac Toe'
TUESDAY	'High School Musical' Dance & Beach Painting
WEDNESDAY	13 Card Game & 2 Legged Race
THURSDAY	3D Name Art & Yoga
FRIDAY	Making Paper Flowers out of Patty Cups & 'Kangaroo Jump'

**Enrol Now:** [www.oshclub.com.au](http://www.oshclub.com.au)

**OSHClub Program Phone:** 0422 097 497

**OSHClub Head Office:** 1300 395 735

**Program Coordinator:** Jagruti

**Program Assistants:** Lekky and Jess (permanent), Jane, Maylee, Ashleigh, Jade and Maria (casuals).

NOTICE - ALLERGY - Please ensure all food is nut free

EXCURSION

INCURSION

**Monday 01 July**

**THE MAGIC OF WINTER**

IN-SERVICE

Rug up and get cosy as we spend a wonderful winter day together!



**Monday 08 July**

**KALEIDOSCOPE COLOUR**

IN-SERVICE

Come dressed in your favourite colour today as we explore all the colours of the rainbow!



**Tuesday 02 July**

IN + \$17.00

**SURVIVAL OF THE FITTEST**

INCURSION - THREATENED & ENDANGERED SPECIES: LIFE ON THE BRINK OF EXTINCTION

Meet some of Australia's rarest threatened & endangered species, as they visit our service today. It's sure to be an eye-opening experience!



**Tuesday 09 July**

IN + \$17.00

**ROCKET TO THE MOON**

INCURSION - SPACE ODYSSEY VIA VIRTUAL REALITY

Virtual Reality transports you to places you cannot easily visit. Every child becomes an astronaut, piloting their research vessel around planets and moons, learning about the solar system.



**Wednesday 03 July**

**PURPLE PARTY PEOPLE**

IN-SERVICE

Come dressed head to toe in purple today and join in the Best Dressed Parade.



**Wednesday 10 July**

EX + \$30.00

**IT'S A RECORD BREAKING DAY**

EXCURSION - INFLATABLE WORLD RINGWOOD

Bounce and climb high and low at Inflatable World today! Don't forget your socks.



Arrive by 8.30am, Don't forget your socks!

**Thursday 04 July**

EX + \$30.00

**MISSION IMPOSSIBLE**

EXCURSION - ZONE BOWLING AND LASER TAG FOREST HILL

Challenge your friends as we head to Zone Bowling Forest Hill for a game of ten pin bowling and laser tag. Please ensure you are wearing socks and enclosed shoes.



Please arrive by 8:30am

**Friday 05 July**

IN + \$17.00

**MYSTICAL MAGIC**

INCURSION - PABLO AND PINKO NO CHARGE MAGIC SHOW AND WORKSHOP

Be Mesmerized by the Pablo and Pinko magic show then followed by a hands on workshop.



**Thursday 11 July**

**FANTASTIC FRIENDS**

IN-SERVICE

'Good friends are like stars, you don't always see them but they're always there'



**Friday 12 July**

IN + \$17.00

**CELEBRATING NAIDOC WEEK**

INCURSION - INDIGENOUS STORYTELLING THROUGH ART

Learn about and create Australian Indigenous art in a fun and unique way through story telling.





Junior Adventures Group continues to pioneer the OSHC sector, building stronger communities and brighter futures for more than 70,000 children, 40,000 families and more than 400 schools across Australia.

#### Our Values

- Considerate - Be there for others
- Passionate - Bring energy and determination
- Courageous - Challenge ourselves

The values we share guide our behaviour as we work towards our vision to **build brighter futures together.**

Vacation Care

**OSHClub**  
Before & After School Care



### What we offer

- A healthy, safe, respectful and engaging environment
- Caring, enthusiastic, fun and friendly team
- New and popular excursions, incursions and theme days
- Stimulating experiences tailored to children's interests, abilities and current trends
- OSHClub endeavour to link each fun experience to key learning outcomes



### We are a child safe organisation



#### What Does My Child Bring?

Please bring breakfast, morning tea, lunch, afternoon tea and a refillable drink bottle. If bringing food please make sure it's nutritious and doesn't require heating or cooking.

Please be mindful of the planned incursion/excursion and ensure your children are dressed appropriately. Don't forget your sun smart hat, comfortable clothes, closed shoes and a drink bottle.

To avoid loss or disappointment, please leave your valuables, money and electronic toys (including tablets and smartphones) at home.



#### Healthy Eating

OSHClub follows the Australian dietary guidelines which can be found at <https://www.eatforhealth.gov.au>

#### Activity Changes

If an excursion or incursion (due to unforeseen circumstances) is cancelled, the activity will either be postponed or an alternative activity of equal value will be provided where possible.



#### Before making your booking & cancellations

All children must be enrolled with OSHClub prior to booking via [oshclub.com.au](http://oshclub.com.au). Bookings made within 5 days for a Vacation Care session will incur an extra charge of \$4.00 per day per child. 7 days notice is required for cancellation of a Vacation Care booking to ensure you will not incur out of pocket costs. Please note that bookings cannot be made online within 5 days of the session commencing. In order to book within this period, you will need to contact the service directly, the Customer Service and Billing Team on 1300 395 735 or by emailing [oshaccounts@junioradventuresgroup.com.au](mailto:oshaccounts@junioradventuresgroup.com.au).

#### Child care subsidy

Our services are registered with Centrelink, so you will be able to claim Child Care Subsidy on your fees. For further information please visit <https://www.education.gov.au/new-child-care-package-frequently-asked-questions>.



#### Children with additional needs

We support all children including children with additional needs. If you would like to provide additional information about your child and his/her needs or require inclusion support funding, please contact us 6 weeks prior to program commencement on 0422 097 497 for staffing purposes.



# Children are Stinky

## Tue 9 Jul 11am

Suitable for children 3 -10 years

Single \$19, Family (4+) \$17 each

[www.whitehorsecentre.com.au](http://www.whitehorsecentre.com.au)

Ph: 9262 6555



# bringing up great kids

Would you like to understand why your **child** behaves the way they do?

Are you interested in knowing more about why you **parent** the way you do?

Would you like to explore how to enhance your parenting and relationship with your child?

Bringing up Great Kids (BUGK) is a program that uses mindfulness and reflection to support parents / carers of children as they review and enhance their patterns of communication with their children.

The BUGK Program supports parents as they explore what influences their parenting practices, and the messages they're passing on to their children.

The program aims to work with parents as they establish a new relationship context with their children.

**For more information or to register, please contact Sandra Fawcett on 9871 1802**

**Who** Parents / Carers of children aged 0-10 years

**Where** Mitcham Family Centre  
15 Brunswick Road  
Mitcham

**When** Thursdays  
6<sup>th</sup> June – 27<sup>th</sup> June 2019  
(4 consecutive weeks)

**Time** 9.30am – 12pm

**Cost** Free  
(tea/coffee/snacks provided)

\*Sorry no child minding available

This program is funded by the City of Whitehorse



# Anyone can earn stickers to help local schools



The Woolworths Earn & Learn program gives schools and Early Learning Centres around Australia the chance to earn amazing school equipment. In 2017 we had over 15,000 schools and Early Learning Centres involved, and delivered over 300,000 new pieces of equipment to kids all over Australia.

Here's what to do:



Between 1 May and 25 June 2019, collect as many stickers as you can.



Stick them on the sticker sheets and give them to your local school or Early Learning Centre. Or drop them into a collection box in store.

Don't forget, you can always download and print extra sticker sheets at [woolworths.com.au/earnandlearn](http://woolworths.com.au/earnandlearn)

## Need more information?

To read our Frequently Asked Questions and Terms & Conditions visit [woolworths.com.au/earnandlearn](http://woolworths.com.au/earnandlearn)



# My Woolworths Earn & Learn stickers



Stick your Woolworths Earn & Learn stickers in the squares below.  
Give them to your local school or Early Learning Centre, or drop them  
into a collection box in store by 25 June 2019.

My name: \_\_\_\_\_

Collecting for: \_\_\_\_\_



Entry to the promotion is open to primary and secondary schools, and eligible Early Learning Centres (ELC) in Australia. Promotion runs 1 May 2019 until 25 June 2019. Speak to your school or ELC to ensure they are registered, or visit [woolworths.com.au/earnandlearn](http://woolworths.com.au/earnandlearn) and check online. Participants must be registered by 25 June 2019. One Woolworths Earn & Learn sticker is given for every \$10 spent in a single transaction at Woolworths Supermarkets, Woolworths Metro and online, excluding liquor, tobacco, gift cards and other specified purchases. While stocks last. Stickers must be counted and submitted by 7 July 2019. Stickers must be redeemed for equipment by 21 July 2019. Retain stickers for validation. For full terms and conditions, please visit [woolworths.com.au/earnandlearn](http://woolworths.com.au/earnandlearn)



**Commencing a Trial with MITCHAM PRIMARY in T1, 2019!**

**A Two Course Lunch is \$8.95 and a Three Course Lunch is \$10.35**

**AVAILABLE – MONDAY'S, WEDNESDAY'S & FRIDAY'S!**

**LUNCH ITEM ONE**

**SALADS**

- Greek Style Salad with Feta and Olives (GF)
- Brown Rice & Mixed Bean Salad (GF)
- Thai Style Noodle Salad (GF)
- Quinoa, Tabouli & Tuna Salad (GF)
- Pasta Salad (GF)
- Pic(k)nic Box – Vegetarian (GF)
- Pic(k)nic Box with Ham (GF)

**SUSHI**

- Sushi - Teriyaki Chicken Hand Rolls (2)
- Sushi - Cooked Tuna Hand Rolls (2)
- Sushi - Avocado Hand Rolls (2)
- Sushi - Cucumber Hand Rolls (2)
- Sushi – Vegetarian Hand Rolls (2)

**BAKERY**

- Cheese and Bacon Roll
- Cheese and Vegemite Scroll
- Supreme Pizza Roll
- Topped with Only Cheese Roll

**PITA PIZZAS**

- Margherita Pita Pizza
- Ham and Pineapple Pita Pizza
- Fresh Tomato and Italian Herb Pita Pizza
- Spinach & Feta Pita Pizza

**SANDWICHES, ROLLS & WRAPS**

- Ham, Cheese and Tomato Sandwich
- Turkey, Cranberry, Lettuce and Cheese Sandwich
- Ham and Cheese Roll
- Gluten Free Ham & Cheese Sandwich (GF)
- Simple Salad Roll
- Gluten Free Ham & Cucumber Sandwich (GF)
- Vegemite Sandwich
- Mild Salami and Salad Roll
- Beetroot and Salad Roll
- Roast Beef, Fruit Chutney, Cheese and Lettuce Roll
- Cheese and Salad Roll
- Wholegrain Cheese and Tomato Sandwich
- WRAP (GF) Ham and Salad
- Chicken and Salad Roll
- Wholegrain ROLL Tuna and Salad
- Salad with Ham (No Cheese) ROLL

**LUNCH ITEM TWO/THREE**

**FRESH FRUIT & VEG**

- Fresh Fruit Combo
- Freshly chopped Orange Segments
- Freshly chopped Strawberries with Green Grapes
- Apple with Lemon Juice, Brown Sugar & Cinnamon
- Freshly chopped Cantaloupe & Watermelon
- Freshly Chopped Watermelon pieces
- Chopped Carrot, Cucumber, Red & Yellow Capsicum
- Freshly chopped Pineapple with Orange Pieces
- Lightly Steamed Corn Wheels & Broccoli
- Sugar Snap Peas, Beans & Cherry Tomatoes
- Cherry Tomatoes with Tasty Cheese & Rice Crackers

**BAKED GOODS**

- Choc Chip Cookie
- Fruit Bun
- Hedgehog Slice
- Finger Bun with Sprinkles
- Banana Cup Cake (GF, DF)
- Iced Cup Cake
- Choc Cup Cake (GF,DF)
- Blueberry Muffin
- Apple & Cinnamon Cake

**YOGHURT**

- Chobani Yoghurt - Strawberry
- Chobani Yoghurt - Blueberry
- Chobani Yoghurt - Passionfruit
- Chobani Yoghurt – Plain
- Chia, Banana, Coconut and Strawberry Bowl

**DIPS & CRACKERS**

- Tzatziki dip with Rice Crackers
- Avocado dip with Rice Crackers
- Spring Onion dip with Rice Crackers
- Moroccan Carrot dip with Rice Crackers

**POPCORN/SNACKS**

- Cobs Popcorn, Lightly Salted
- Cobs Popcorn Slightly Sweet, Lightly Salted
- Lightly salted Fav'va Beans

**DRINKS**

- Apple Juice
- Orange Juice
- Nippy's Chocolate Milk

For more information check out our website

**[www.classroomcuisine.com.au](http://www.classroomcuisine.com.au)**



## FINANCIAL ASSISTANCE INFORMATION FOR PARENTS

Every Victorian child should have access to the world of learning opportunities that exist beyond the classroom. The Camps, Sports and Excursions Fund helps ensure that no student will miss out on the opportunity to join their classmates for important, educational and fun activities. It is part of making Victoria the Education State and the Government's commitment to breaking the link between a student's background and their outcomes.

### CAMPS, SPORTS & EXCURSIONS FUND (CSEF)

School camps provide children with inspiring experiences in the great outdoors, excursions encourage a deeper understanding of how the world works and sports teach teamwork, discipline and leadership. All are part of a healthy curriculum.

CSEF is provided by the Victorian Government to assist eligible families to cover the costs of school trips, camps and sporting activities.

If you hold a valid means-tested concession card or are a temporary foster parent, you may be eligible for CSEF. A special consideration category also exists for asylum seeker and refugee families. The allowance is paid to the school to use towards expenses relating to camps, excursions or sporting activities for the benefit of your child.

The annual CSEF amount per student is:

- \$125 for primary school students
- \$225 for secondary school students

### MORE INFORMATION

For more information about the CSEF visit [www.education.vic.gov.au/csef](http://www.education.vic.gov.au/csef)

### HOW TO APPLY

New applicants should contact the school office to obtain a CSEF application form or download from [www.education.vic.gov.au/csef](http://www.education.vic.gov.au/csef)

If you applied for the CSEF at your child's school in 2018, you do not need to complete an application form in 2019 unless there has been a change in your family circumstances.

You only need to complete an application form if any of the following changes have occurred:

- **new student enrolments**; your child has started or changed schools in 2019 or you did not apply in 2018.
- **changed family circumstances**; such as a change of custody, change of name, concession card number, or new siblings commencing at the school in 2019.

Check with the school office if you are unsure.



## CAMPS, SPORTS AND EXCURSIONS FUND (CSEF) APPLICATION FORM

School Name

School REF ID

### Parent/legal guardian details

Surname \_\_\_\_\_

First name \_\_\_\_\_

Address \_\_\_\_\_

Town/suburb \_\_\_\_\_ State \_\_\_\_\_ Postcode \_\_\_\_\_

Contact number \_\_\_\_\_

Centrelink pensioner concession **OR** Health care card number (CRN)

-  -  -  **OR**

☐ Foster parent\* **OR** ☐ Veterans affairs pensioner

\*Foster Parents must provide a copy of the temporary care order letter from the Department of Health and Human Services (DHHS).

### Student details

Child's surname	Child's first name	Student ID	Date of birth (dd/mm/yyyy)	Year level

I authorise the Department of Education and Training (DET) to use Centrelink Confirmation eServices to perform an enquiry of my Centrelink customer details and concession card status in order to enable the business to determine if I qualify for a concession, rebate or service. I also authorise the Australian Government Department of Human Services (DHS) to provide the results of that enquiry to DET.

I understand that:

- DHS will use information I have provided to DET to confirm my eligibility for the Camps, Sports and Excursions Fund and will disclose to DET personal information including my name, address, payment and concession card type and status.
- this consent, once signed, remains valid while my child is enrolled at a registered Victorian school unless I withdraw it by contacting the school.
- I can obtain proof of my circumstances/details from DHS and provide it to DET so that my eligibility for the Camps, Sports and Excursions Fund can be determined.
- if I withdraw my consent or do not alternatively provide proof of my circumstances/details, I may not be eligible for the Camps, Sports and Excursions Fund provided by DET.
- information regarding my eligibility for the Camps, Sports and Excursions Fund may be disclosed to the Victorian Department of Health and Human Services and/or State Schools Relief for the purpose of evaluating concession card services or confirming eligibility for assistance.

You are able to request access to the personal information that we hold about you, and to request that any errors be corrected, by contacting your child's school.

Signature of applicant \_\_\_\_\_

Date \_\_\_\_ / \_\_\_\_ / \_\_\_\_



## CSEF ELIGIBILITY

Below is the criteria used to determine a student's eligibility for the Camps, Sports and Excursions Fund (CSEF).

### Criteria 1 – Eligibility

To be eligible\* for the fund, a parent or legal guardian of a student attending a registered Government or non-government Victorian primary or secondary school must:

- on the first day of Term one, or;
- on the first day of Term two;
  - a) Be an eligible beneficiary within the meaning of the *State Concessions Act 2004*, that is, be a holder of Veterans Affairs Gold Card or be an eligible Centrelink Health Care Card (HCC) or Pensioner Concession Card (PCC) holder, OR
  - b) Be a temporary foster parent, and;
  - c) Submit an application to the school by the due date.

\* A special consideration eligibility category also exists. For more information, see: [www.education.vic.gov.au/csef](http://www.education.vic.gov.au/csef)

Parents who receive a Carer Allowance on behalf of a child, or any other benefit or allowance not income tested by Centrelink, are not eligible for the CSEF unless they also comply with one of (a) or (b) above.

### Criteria 2 - Be of school age and attend school in Victoria

School is compulsory for all Victorian children aged between six and 17 years of age inclusive.

For the purposes of CSEF, students may be eligible for assistance if they attend a Victorian registered primary or secondary school. Typically, these students are aged between five and 18 years inclusive.

CSEF is not payable to students attending pre-school, kindergarten, home schooled, or TAFE.

### Eligibility Date

For concession card holders CSEF eligibility will be subject to the parent/legal guardian's concession card being successfully validated with Centrelink on the first day of either term one (29 January 2019) or term two (23 April 2019).

## PAYMENT AMOUNTS

### CSEF payment amount

The CSEF is an annual payment to the school to be used towards camps, sports and/or excursion expenses for the benefit of the eligible student.

- Primary school student rate: \$125 per year.
- Secondary school student rate: \$225 per year.

The CSEF is paid directly to your child's school and will be allocated by the school towards camps, sports and/or excursion costs for your child.

**For ungraded students**, the rate payable is determined by the student's date of birth. For more information, see: [www.education.vic.gov.au/csef](http://www.education.vic.gov.au/csef)

**Year 7 government school students** who are CSEF recipients are also eligible for a uniform voucher. Secondary schools are required to make applications on behalf of parents so please register your interest at the school.

## HOW TO COMPLETE THE APPLICATION FORM

### NOTE: ALL SECTIONS MUST BE COMPLETED BY PARENT/LEGAL GUARDIAN

1. Complete the PARENT/LEGAL GUARDIAN DETAILS section.  
Make sure that the Surname, First Name, and Customer Reference Number (CRN) details match those on your concession card. You will also need to provide your concession card to the school.  
If you are claiming as a Foster Parent or a Veteran Affairs Pensioner, you will need to provide a copy of documentation confirming your status as a temporary Foster Parent or provide your Veterans Affairs Pensioner Gold card to the school.
2. Complete the STUDENT/S DETAILS section for students at this school.
3. Sign and date the form and return it to the school office as soon as possible. The CSEF program for 2019 closes on 28 June, 2019.

CSEF payments cannot be claimed retrospectively for prior years.

**Queries relating to CSEF eligibility and payments should be directed to the school.**